



## *One of the largest UK based Educational Agencies*

Established in 2000 – BCIE can today boast quality and professionalism both as to the numerous students it places abroad each year and the number of universities and colleges that trust us to represent them.

### BCIE Offices



### Study Abroad Destinations



#### FEATURE ARTICLES:

- MESSAGE FROM OUR DIRECTORS
- OUR SERVICES
- THE VISA PATHWAY

- BANKING AND FINANCE COURSES
- PUBLIC HEALTH COURSES
- STUDY IN THE USA
- STUDYING IN AUSTRALIA



British Canadian International Education Ltd

NIGERIA GHANA KENYA PAKISTAN UK

*Increasing International Understanding Through Education!*

**A warm welcome to all our students, parents, sponsors and universities**

In this issue of our Passport Magazine we have put together articles and information which we hope you will find useful when deciding where and what to study. You will find in this issue articles on Banking and International Finance, Public Health, Studying in Australia, Study in the USA and The Visa Pathway.

Over the last three years there has been a strong increase in demand for more world-wide locations and more universities to choose from. Therefore we have continued to diversify the BCIE global network to include more quality universities from the UK, Australia and the USA. You will not be short of choice.

As a company BCIE has continued to consolidate and expand throughout 2014. In May 2014 we opened a new office in Ibadan. We now have a nationwide network of seven BCIE offices in Nigeria and this illustrates our commitment to both our students and our university partners in the Nigerian market.

Following the introduction of 'Credibility Interviews' and more demanding English Language requirements by the UK authorities in 2012/2013 we have seen a significant growth in demand for places in our Australian, USA and Dubai Universities. Traditionally the UK has been the 'Number One' destination for our International students – and it continues to be so. However our Australian universities are becoming much more active now and the American university sector finally appears to be undergoing a cultural change which means a more progressive open door philosophy towards our international students.

Here is an update for you as to recent developments at BCIE:

**Greater diversification**

- This has been one of our stand-out characteristics and we have therefore expanded the BCIE University network – especially in Australia, USA and the UK. For example the recent introduction of the Streamlined Visa Processing (SVP) innovation by the Australian government has boosted student interest in our Australian universities and made it much easier to obtain a student visa.

**Expansion of the BCIE Office Network**

- Given the continued growth in demand from our students in Pakistan we have relocated our offices in both Islamabad and Lahore; we are also planning to open a BCIE Office in Karachi in the very near future.
- We are also planning to open our eighth Nigerian Office during 2015 and we have recently opened our first dedicated Australia and USA branch in Lagos.
- We have also recently opened a BCIE Office in Dubai.

**BCIE Edufairs have been expanded**

- Traditionally we only ran one annual BCIE university exhibition. However since 2012, in response to strong student demand, we experimented with running two university fairs each year – in June and in October/November. The experiment was a huge success and therefore we will continue to run two fairs each year – catering for the two big student intakes in October and January each year.

In regards to the future we will continue to keep a very close eye on developments in the UK, Australia and the USA. In this way we will continue to provide our students and universities with the very best service available anywhere in the world.

So, welcome to BCIE and let's make sure that, working together, we can help you make your dreams of studying abroad come true!

Dr Cliff Dedynski  
Director BCIE UK

Nazmina Panju Dedynski (CANTAB)  
Director BCIE UK



REGISTERED OFFICE ADDRESS: PO BOX 1531 | BEDFORD | MK40 9EN | UK  
TEL: 0870 803 4317 FAX: 0870 803 4318 E-MAIL: ukheadoffice@bcie.co.uk URL: www.bcie.co.uk  
REGISTRATION NUMBER: 7061743

**The BCIE Difference:**

- ✓ Thorough, detailed and up to date information about studying in the UK, Australia, the USA, Dubai and Canada.
- ✓ UK Head Office so we can help you even after you have arrived in the UK.
- ✓ Extensive BCIE University network enables us to give impartial advice.
- ✓ Representation of top quality universities in the UK, USA, Canada, Australia and Dubai.
- ✓ Respectable offices and staff that are friendly, helpful, well trained and professional.
- ✓ Student Counsellors that have studied in, been trained in or visited the UK, Australia, Canada and the USA. There is no substitute for first hand experience!
- ✓ University staff visit our offices frequently – they can directly counsel you as to their university and in some cases give on the spot offers.
- ✓ Visa Counsellors that have applied for visas themselves and have extensive visa experience ensuring that they can advise you correctly.
- ✓ Close communication and regular meetings with the UKVI and Australian High Commission to keep up to date with any change in policies or procedures.
- ✓ Excellent visa success rates of 100% in Australia and Dubai and 98% in the UK.

**Our offices can:**

- Help you choose the right country to study abroad
- Help you pick the right location, university and course in the UK, Canada, Australia, Dubai or USA
- Help with scholarships, accommodation, airport pick ups, fees payments etc
- And most importantly and where our specialism lies – Help you apply for and get your student visa

# Welcome to



British Canadian International Education Ltd

## Background:

BCIE was set up in 1999/2000 by Dr. Cliff Dedynski and Nazmina Panju Dedynski (CANTAB). Together they have over 40 years experience in overseas education and today there are over 100 universities in the BCIE network spanning the UK, Australia, Canada, the USA and Dubai. BCIE has 12 offices worldwide; Nigeria (7), Ghana (1), Kenya (1), Pakistan (2) and the UK head office (1) – employing more than 70 well qualified and experienced staff. BCIE continues to expand and now places more than 1500 international students into their global network of universities each year, making BCIE the largest UK based student recruitment agency.

## BCIE Services:

The growing BCIE team, now spanning five continents, are highly dedicated to helping our students get the education and support they need to fulfil their career aspirations.

Some of the services BCIE provide are as follows:

- Up to date impartial counselling advice aimed at helping you select the right country, university and course for your chosen career path depending on your current qualifications and aspirations.
- Comprehensive advice on the university application procedure (i.e. providing you with the University application forms and also help you to complete them).
- Information on all available scholarships – BCIE will inform you and help with the application.
- Provide you with detailed information as to the location, resources, facilities and accommodation available at the university of your choice.
- Help and advise you as to the procedure involved in obtaining your student visa and offer you an opportunity to go through a mock interview (where applicable). For Dubai, with the help of our universities, we will help you to obtain your visa so you do not even need to step into an embassy! In rare cases of visa refusals we can help you re-apply or appeal your application (we have a 97% visa success rate).

Once you have applied through BCIE and received an offer from a university, you will be required to pay part of your fees up front before you apply for your visa. Without the required deposit and/or supporting bank statements you will not meet the visa requirements of Australia, Canada, the USA or the UKVI. In addition nearly all universities now require a substantial deposit. BCIE will facilitate the payment of any deposit required to your university.

**Remember we are the universities representative in your country. Take all the help and advice you will be offered. After all, you are investing a huge amount into your overseas education; you deserve to get all the quality help and assistance available through BCIE!**

## Your local BCIE office:

BCIE offices can currently be found in four countries across Africa and South Asia;  
**Opening Times (for all offices):**  
Monday – Friday: 9:00am – 5:00pm  
Saturday: 11:00am – 4:00pm (Appointment Only)

### Nigeria

**Lagos: Victoria Island**

**Tel:** 013427601

**Mobile:** 08062351535 / 07081819614

**Email:** nigeriaikoyi@bcie.co.uk

**Lagos: Ikeja**

**Tel:** 013427600

**Mobile:** 08023379290

**Email:** nigeriaikeja@bcie.co.uk

**Lagos: Australia & USA Branch**

**Tel:** 013427673

**Mobile:** 08145935517

**Email:** studyabroad\_lagos@bcie.co.uk

**Abuja**

**Tel:** 094614900 / 09093478930

**Mobile:** 08066788636

**Email:** abuja@bcie.co.uk

**Kano**

**Tel:** 08135403294

**Mobile:** 08130743252

**Email:** kano@bcie.co.uk

**Port Harcourt**

**Tel:** 07085010020

**Mobile:** 08069278962

**Email:** manager\_ph@bcie.co.uk

**Ibadan**

**Tel:** 022913532

**Mobile:** 08171684741

**Email:** manager\_ibadan@bcie.co.uk

### Ghana

**Accra**

**Tel:** 0302778748

**Mobile:** 0246015016 / 0244828577

**Email:** ghana@bcie.co.uk

### Kenya

**Nairobi**

**Tel:** 023754741

**Mobile:** 0722815178 / 0733815151

**Email:** kenya@bcie.co.uk

### Pakistan

**Islamabad**

**Tel:** 0092512814195 / 0092512814196

**Mobile:** 03338354851

**Email:** islamabad\_pk@bcie.co.uk

**Lahore**

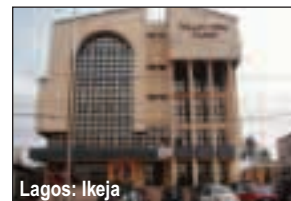
**Tel:** 00924235785514 / 15 / 16

**Mobile:** 03238400638

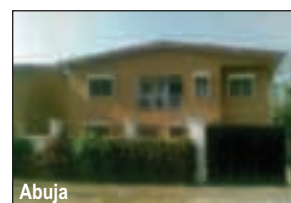
**Email:** lahore\_pk@bcie.co.uk



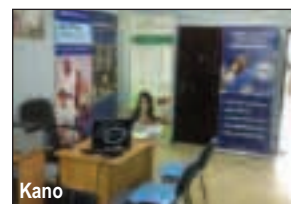
Lagos: Victoria Island



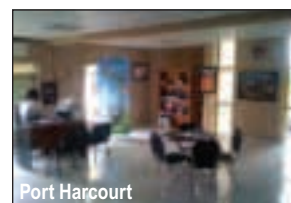
Lagos: Ikeja



Abuja



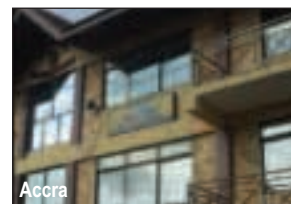
Kano



Port Harcourt



Ibadan



Accra



Nairobi

# Degrees in Banking and Finance

Article by Angharad Thomas, Head of International Recruitment and Admissions, Bangor University

Studying a degree in Banking and Finance can open doors to a range of careers, both within the Banking and Finance industry and as Finance managers and directors in all sectors. Thousands study degrees in Finance in the UK every year and almost every UK university offers a degree in Finance. A degree in Banking and Finance combines the mainstream subject of Finance with the specialist and niche subject of Banking – which is an opportunity to differentiate yourself in the job market.

## Banking Degrees

A much smaller number of UK universities offer degrees in Banking. It can be possible to combine Banking degrees with Finance, Accounting, Economics and other business subjects. Given the importance of the banking sector to the economy of every country, a degree which includes a Banking specialism not only provides candidates with knowledge and skills suitable for entering these professions, but also provides candidates with their own niche specialism's and an 'edge' when applying for positions against hundreds of other qualified candidates.

## Islamic Banking and Finance – why choose this?

Over the past decades, Islamic banking and finance has emerged as a new and alternative model for financial intermediation. Islamic banking and finance has become a preferred model for one-fifth of the world's population. As a result, a number of UK universities have started teaching this subject.

With the growth in this sector, and with countries introducing Islamic finance as an approved banking mechanism, the demand for staff appropriately educated and knowledgeable in this field is growing.

## Skills and Knowledge

The basic Banking and Finance curriculum will be similar across most universities, although specialist modules can vary significantly between institutions. It is important to look closely at the modules offered within degrees to decide which course is most suitable in terms of your interests, personal strengths and future career. It is also important to look at courses that offer the opportunity to do a work placement.

## What kinds of topics are studied?

Courses may include financial analysis, financial planning, risk management, financial intermediation, insurance, behavioural finance, global financial markets, merger and acquisition, investment strategy, financial reporting and regulation and many more. An international focus should be integral, including a comparative study of banking and finance policies and practices in different countries.

## What kind of skills will I develop?

The curriculum will include modules that help students develop skills in quantitative and qualitative research, statistical analysis, financial modelling, financial engineering, portfolio management etc. Students will also develop general skills including critical thinking, project work and teamwork.

## How else will I benefit?

Many lecturers undertake research as well as lecturing, and a number of lecturers also do consultancy work. Through these activities lecturers share their findings in lectures where students can learn of the latest developments taking place in the sector. Some universities also arrange guest lectures from professionals from within the sector such as from HSBC and The World Bank.

Many universities have set up student branches of professional organisations, which can help students get onto the first step of the career ladder. Other activities include nationwide business competitions for student teams such as the IBM Business Challenge.

## How will I gain admission? Entry Requirements

### Undergraduate

Entry requirements vary between universities. For entry onto a bachelor degree, a school-leaving qualification (WAEC/NECO) plus the study of a 1-year foundation course is required. Direct entry is possible with A-levels or International Baccalaureate.

### Postgraduate

A degree equivalent to the British bachelor degree is required. A small number of universities might require a minimum of a first class honours degree whilst the majority will require a 2nd class honours degree. A small number might accept a 3rd class honours degree.

As well as looking at the degree classification, some universities will need a degree in a related subject, so for entry onto a Masters in Banking and Finance degree, a bachelor degree in Finance or a related subject such as Economics or Accounting would be acceptable. Entry requirements vary, not only between universities but also between courses at the same university; therefore make sure that you research suitable courses and entry requirements in detail before making an application.

### Work placements

Some Universities will offer work placements as part of their degree, but students can also pursue a work placement by finding one themselves. Placements will vary in duration from a couple of weeks to a whole year, depending on the university. Placements can aid students' understanding of what is taught in the classroom and put theories into practice.

## Islamic Banking and Finance

### Nigeria Focus:

Following an approval being granted for Nigerian banks to offer Islamic banking services banking corporations in Nigeria will need staff that are appropriately educated and trained to operate in this specialist sector of banking. Masters degrees such as those offered at Bangor University in the UK offer specialist preparation in the field.

Bashirudeen Maishanu Mohammed (pictured below), Manager at the Central Bank of Nigeria studied MSc Islamic Banking and Finance at Bangor University in 2012/13 and commented on his experience:



'The Islamic Banking & Finance program in Bangor Business School opened my eyes to a truly scientific and contemporary approach to Islamic finance. Drawing from a rich pool of academic diversity, the program exposed me to the mechanics of conventional finance and its application to Islamic sharia principles. I thoroughly enjoyed

the program. The serene and evergreen country that is Wales was a refreshing experience. I look forward to returning to Bangor for further studies in Islamic Finance.'

### For more details about studying Banking and Finance contact:

Bangor University In-country Representative Lagos

Mobile: 08060136178

Tel: 01-3427672

Email: bangor\_nigeria@bcie.co.uk

## A selection of Banking and Finance courses within BCIE's network

University	Course Title	Level	Country	Duration
Bangor University	Banking and Finance Degree BA/BSc	UG	UK	3 Years
Bangor University	Islamic Banking and Finance (MA/MSc)	PG	UK	1 Year
Cardiff University	Banking and Finance BSc (Econ)	UG	UK	3 Years
City University London	Banking & International Finance BSc (Hons)	UG	UK	3 Years
City University London	Banking and International Finance MSc	PG	UK	1 Year
Coventry University	Banking and Finance MSc	PG	UK	1 Year
University of Glasgow	MSc Banking and Financial Services	PG	UK	1 Year
Kingston University	Banking and Finance MSc	PG	UK	1 Year
University of Leeds	Banking and International Finance MSc	PG	UK	1 Year
University of Leicester	Banking and Finance MSc	PG	UK	1 Year
London Metropolitan University	Banking and Finance BSc (Hons)	UG	UK	3 Years
London South Bank University	MSc International Banking and Finance	PG	UK	15 Months
Loughborough University	Banking, Finance and Management	UG	UK	4 Years
Loughborough University	Money, Banking and Finance	PG	UK	1 Year
Manchester Metropolitan University	Banking and Finance BA (Hons)	UG	UK	3 Years
Newcastle University	Banking and Finance MSc	PG	UK	1 Year
University of Reading	MSc Investment Banking & Islamic Finance	PG	UK	1 Year
University of Salford	International Banking and Finance MSc	PG	UK	1 Year
Sheffield Hallam University	Banking and Finance MSc	PG	UK	1 Year
Sheffield Hallam University	International Finance & Banking BA (Hons)	UG	UK	3 Years
University of South Wales	Islamic Banking and Finance MSc	PG	UK	1 Year
University of Strathclyde	International Banking and Finance MSc	PG	UK	1 Year
University of Sunderland	Banking and Finance MSc	PG	UK	1 Year
Swansea University	International Banking and Finance MSc	PG	UK	1 Year
University of West London	Finance and Islamic Banking MSc	PG	UK	1 Year
University of Worcester	Business, Finance & Accountancy BA (Hons)	UG	UK	3 Years
Central Queensland University (00219C)	Bachelor of Accounting	UG	AUSTRALIA	3 Years
Curtin University (02637B)	Accounting and Finance BCom	UG	AUSTRALIA	3 Years
Deakin University (00113B)	Bachelor of Commerce (Finance)	UG	AUSTRALIA	3 Years
Deakin University (00113B)	Master of International Finance	PG	AUSTRALIA	18 Months
Griffith University (00233E)	Master of Finance	PG	AUSTRALIA	2 Years
La Trobe University (00115M)	Bachelor of Finance	UG	AUSTRALIA	3 Years
La Trobe University (00115M)	Master of Financial Analysis	PG	AUSTRALIA	3 Years
Southern New Hampshire University	Bachelors in Finance	UG	USA	4 Years
Southern New Hampshire University	Master of Finance	PG	USA	15 Months

Information on this table is correct at time of printing and is correct to the best of our knowledge (2014)

# STUDY IN THE UK AT BANGOR UNIVERSITY



One of the top Universities in the UK for:

- ◆ Computer Science
- ◆ Electronic Engineering
- ◆ International Law - LLM and LLB
- ◆ Islamic Banking and Finance
- ◆ Marine Geoscience
- ◆ MBA
- ◆ Nursing
- ◆ Public Health

- ◆ Safe and cost effective city
- ◆ Generous scholarships
- ◆ Good student support
- ◆ Guaranteed accommodation
- ◆ High student satisfaction rates
- ◆ September and January starts
- ◆ Top 50 UK University  
*(Times University Rankings 2014)*

**For more information please contact:**  
Sarah Jones-Morris, Country Manager  
E-mail: [s.jones-morris@bangor.ac.uk](mailto:s.jones-morris@bangor.ac.uk)  
T: +44 (0) 1248 388 843

**For Nigeria contact:**  
**Ajoke Olakunle**  
M: 08060136178 T: 01-3427672  
E-mail: [bangor\\_nigeria@bcie.co.uk](mailto:bangor_nigeria@bcie.co.uk)

[www.bangor.ac.uk](http://www.bangor.ac.uk)



▶ MELBOURNE, AUSTRALIA

SWINBURNE

SWINBURNE UNIVERSITY OF TECHNOLOGY

# Study at a world-ranked university in Australia

Ranked as one of the top universities in the world by the 2014 Academic Ranking of World Universities, Swinburne University of Technology is in the top 10 in Australia and top 3 in Melbourne.

### Courses available in

- Arts and Social Sciences
- Aviation
- Business and Management
- Design
- Digital Media
- English Language (ELICOS)
- Engineering
- Film and Television
- Health Sciences and Community Care
- Information and Communication Technologies
- Law
- Media and Communications
- Psychology
- Science

### ▶ Contact us

To learn more about Swinburne, call +61 3 8676 7002 or visit our website.

▶ [swinburne.edu.au/international](http://swinburne.edu.au/international)

Swinburne  
▶ think forward

CRICOS provider code: 00111D

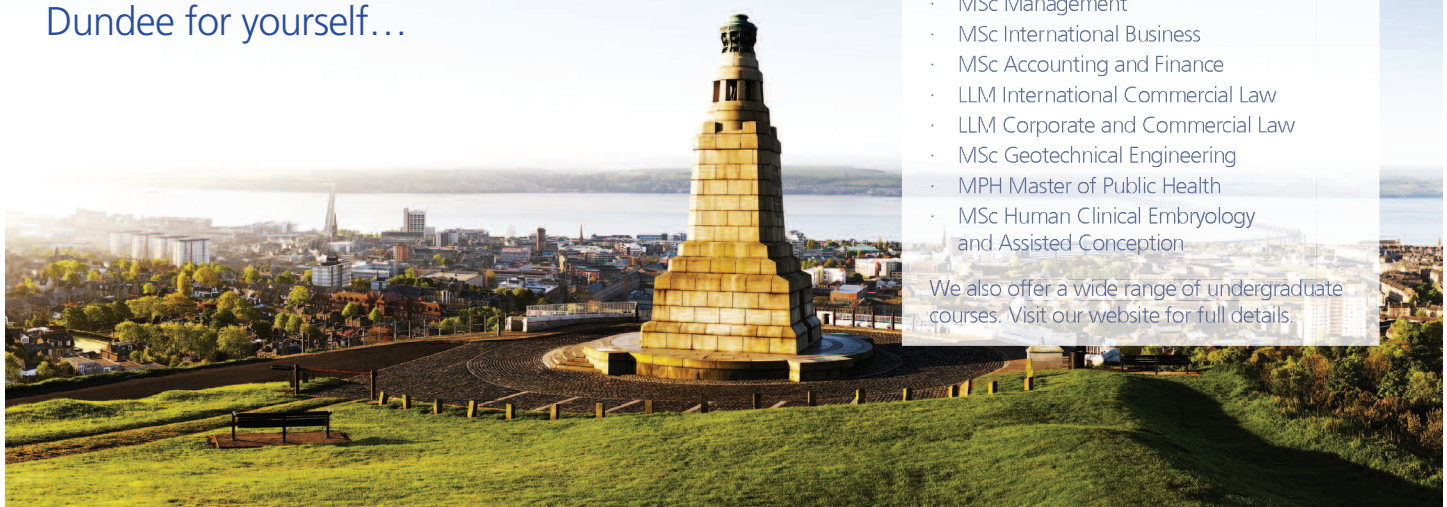
## UNIVERSITY OF DUNDEE

Our students rate us **number one in Scotland\***, find out why and experience Dundee for yourself...

The University of Dundee offers over 200 postgraduate courses but some of the most popular are:

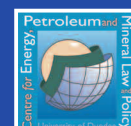
- MSc International Oil and Gas Management
- MSc Energy Studies - with specialisation in various fields
- LLM Energy Law and Policy
- LLM Oil and Gas Law and Policy
- MSc Management
- MSc International Business
- MSc Accounting and Finance
- LLM International Commercial Law
- LLM Corporate and Commercial Law
- MSc Geotechnical Engineering
- MPH Master of Public Health
- MSc Human Clinical Embryology and Assisted Conception

We also offer a wide range of undergraduate courses. Visit our website for full details.



Find out more at [www.dundee.ac.uk](http://www.dundee.ac.uk) and contact our International Office at [international@dundee.ac.uk](mailto:international@dundee.ac.uk)

\*Times Higher Education Student Experience Survey 2014





**Sheffield  
Hallam  
University**

**Transform  
Yourself**

with Sheffield Hallam University

**Studying at Sheffield Hallam University could transform your career and your future because we help you to develop the skills and experience you need to find your dream job**

We are one of the UK's largest universities with more than 37,000 students, we offer excellent facilities, a great choice of over 740 undergraduate and postgraduate courses and an unforgettable student experience.

**We offer**

- at least £1,000 discount for 2015/16 start courses – for full terms and conditions visit [www.shu.ac.uk/international/scholarships-bursaries](http://www.shu.ac.uk/international/scholarships-bursaries)
- a generous package of scholarships for international students
- more than 740 undergraduate and postgraduate career-enhancing courses
- high-ranking courses with eight subject areas in the top 20 in the UK subject area university league tables (The Time and Sunday Times Good University Guide 2015)
- 24 hour learning centres and computing facilities
- courses starting in January and September
- one year top up courses suitable for HND holders who want to up skill to a degree qualification.
- distance learning courses
- a dedicated international student support team
- a friendly, safe and multicultural living environment
- close links with business and industry-focused organisations

**Choose a career-enhancing course from our broad range of undergraduate, postgraduate and PhD options.**

- art and design
- architecture
- biosciences
- built environment
- business and management
- computing
- engineering
- finance
- forensics
- health
- law
- media and communications
- physiotherapy
- social sciences
- sport
- teacher education
- tourism hospitality and events.

For more information  
Visit [www.shu.ac.uk/international](http://www.shu.ac.uk/international)

Connect to us  
**f Sheffield Hallam University International**  
**t @SHUoverseas**

**Education**   
Innovative. Individual. Inspirational.

navitas

## Study in the UK with Navitas

Navitas works in partnership with nine of the UK's most dynamic universities to offer international students pathways to a wide range of degree programmes. With our supportive environment, you can commence your studies on a UK university campus and progress seamlessly to each of the stages of your study – through to your degree award.



an Affiliate College of



### ICRGU at Robert Gordon University

**Location:** Scotland  
**City:** Aberdeen

1

Robert Gordon University has an outstanding reputation for teaching excellence and is first in the UK for graduate employment. ICRGU is located right in the heart of Robert Gordon University's Garthdee campus in Aberdeen. This spectacular and modern campus is situated on the banks of the River Dee, and is surrounded by grassy banks and trees. Garthdee is only 15–20 minutes from the city centre on a direct bus route.



an Affiliate College of



### BCUIC at Birmingham City University

**Location:** Midlands, England  
**City:** Birmingham

2

One of the UK's most innovative universities Birmingham City University has an ongoing reputation as one of the UK's leading universities, thanks to its high quality teaching and fantastic facilities. Located on the stunning Bourneville Campus, just minutes from the world famous Cadbury World and factory.



an Affiliate College of



### ICWS at Swansea University

**Location:** Wales  
**City:** Swansea

3

Swansea University is a research-led university that has been making a difference since 1920. The university community thrives on exploration and discovery, and offers the right balance of excellent teaching and research, matched by an enviable quality of life.

ICWS is located on the stunning parkland seafront campus of Swansea University overlooking Swansea Bay and the Gower Peninsula – the first place to be designated as an Area of Outstanding Natural Beauty (AONB) by Natural England on behalf of the Welsh Assembly Government.



BCIE is a group of highly experienced workers who helped me in applying for admission into Swansea University. I really recommend them coz they put their best in making you comfortable and happy. So BCIE is the best Agency to work with for other students in search of admission.  
**(Tetede Oluwatobi Solomon – ICWS, Abuja)**



**STUDY WITH PLYMOUTH UNIVERSITY**

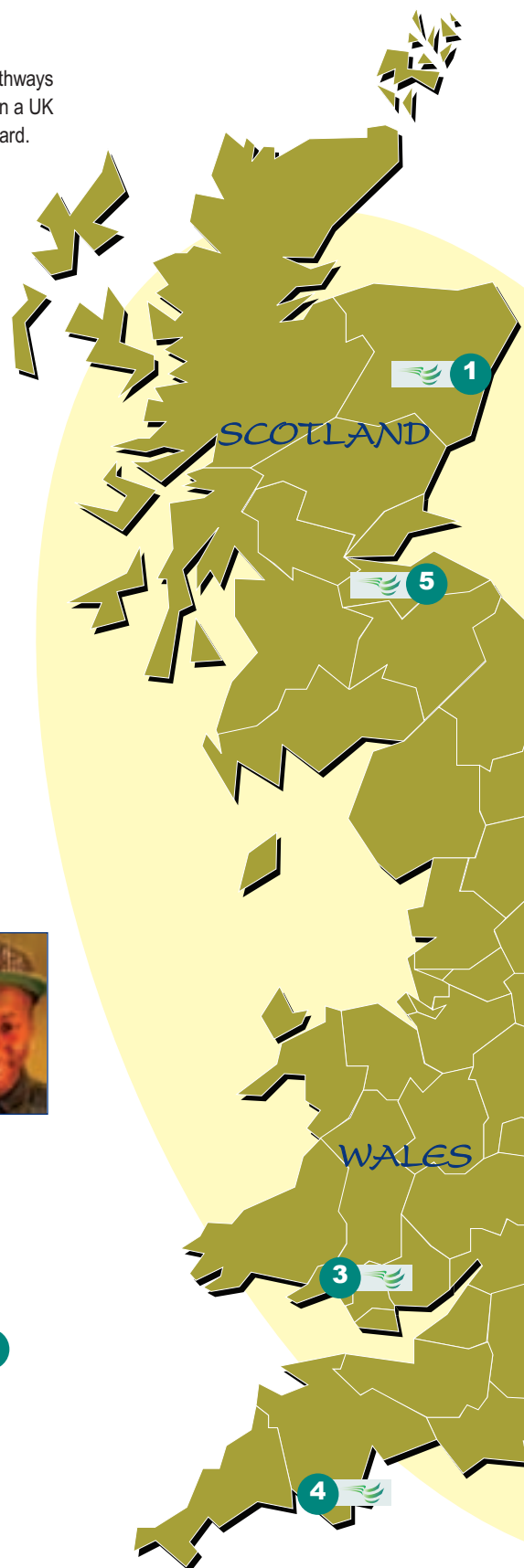
An Associate College of Plymouth University

### PUIC at Plymouth University

**Location:** South West, England  
**City:** Plymouth


4

The University of Plymouth has an educational history dating back to 1862. It is a friendly, dynamic and innovative university with approximately 30,000 students on full and part-time programmes of study including around 3,000 students from over 100 countries. Plymouth also benefits from its attractive location with a vibrant city life and culture, set in dramatic countryside and close to some of Britain's most beautiful beaches with excellent sailing and surfing opportunities.










an Associate College of  
**Edinburgh Napier**  
UNIVERSITY

### EIC at Edinburgh Napier University

**Location:** Scotland  
**City:** Edinburgh

5

Edinburgh Napier offers an exciting and supportive learning experience. With a student population of over 15,000 representing more than 100 countries, situated in Scotland's capital city, Edinburgh is internationally recognised as one of the best cities in the world in which to live.



an Associate College of  
**Anglia Ruskin**  
University  
Cambridge & Chelmsford

### CRIC at Anglia Ruskin University

**Location:** East Anglia, England  
**City:** Chelmsford and Cambridge

6

The excellent facilities at CRIC are essential in providing the support and resources required to make the most of your studies. In the last five years Anglia Ruskin University have invested over £80 million in campus developments, with a further £124 million planned over the next 5 years. Situated in the cities of Cambridge and Chelmsford (a town in the county of Essex just 35 minutes from London) there are many social activities available while you enjoy your studies.



BCIE is a very competent and efficient company, they easily find the solution by guiding and leading you to the right career path for a greater future... one word success.  
**(Halima Dange – CRIC, Victoria Island)**




an Associate College of  
**University of Hertfordshire**

### HIC at University of Hertfordshire

**Location:** South East, England  
**City:** Hatfield

7

The University of Hertfordshire is ranked as the No. 1 modern university in the UK (The Complete University Guide, 2011). HIC is located in the historic town of Hatfield, which is just a 20 minute train journey from Central London. The University of Hertfordshire offers some of the best UK university sports facilities and a world-class 1,500 capacity entertainment venue.



in association with  
**Brunel**  
UNIVERSITY  
LONDON

### LIBT at Brunel University


**Location:** London  
**City:** London

8

Brunel University is a modern, dynamic institution, which prides itself on the quality of its academic programmes and the applied nature of its research activity. Situated in Uxbridge, west London, the university is dedicated to providing a world class education for its 13,000 students, which includes an international student population of more than 2,000, from over 113 different countries.



I wish to thank the entire management of BCIE Kano for their relentless support towards my admission process. My dream has been to study Computer Science in a reputable University in the United Kingdom and BCIE has helped me realize that without too much hassle. I recommend the services of BCIE to whoever is in need of a guide to further his studies especially in terms of choosing the right course and Visa application.  
**(Abdul Munaf Isah Yunusa – LIBT, Kano)**



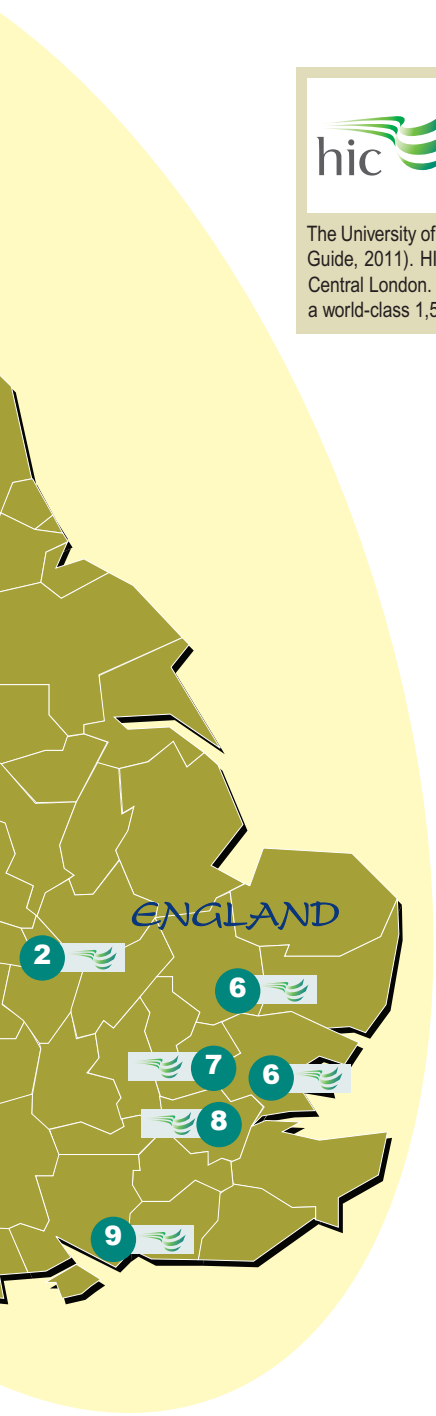
an Associate College of  
**University of Portsmouth**

### ICP at University of Portsmouth

**Location:** South West, England  
**City:** Portsmouth

9

The University of Portsmouth is one of the top modern universities to feature in the Times Higher Education Student Experience Survey (2010). Modernisation and investment is evident right across the university campus, including investing £11.5m in the library facilities and £12m on a cutting-edge, purpose built premises for the Business School. ICP is situated in the heart of Portsmouth's city centre campus, just a five minute walk from the main railway station and within easy reach of the beach.



**For more information please contact one of our Navitas Representatives or your nearest BCIE Office:**

<b>Lagos:</b>	<b>Tel:</b> 013427608	<b>Mob:</b> 07087773049	<b>Email:</b> navitas_lagos@bcie.co.uk
<b>Port Harcourt:</b>	<b>Tel:</b> 07013689688	<b>Mob:</b> 08107863672	<b>Email:</b> navitas_abuja@bcie.co.uk
<b>Abuja:</b>	<b>Tel:</b> 07062113306	<b>Mob:</b> 08167890901	<b>Email:</b> navitas_ph@bcie.co.uk

# Why Study in Australia?

International students today have a wide variety of destinations to choose from when trying to make a decision on where to pursue their studies. Studying abroad is a major investment and it is important for students to make an informed choice, based on facts. Australia is a choice destination for thousands of students, and below are some of the reasons why students decide to study in Australia:

- **Unique experience** – Studying in Australia promotes innovative, creative and independent thinking. You'll learn to work as part of a team, to communicate effectively with others and to develop the practical skills and intellectual abilities you need for global success.
- **International reputation** – The Australian education system has a strong international reputation and is known for its effective structure and innovative policy developments. Many other countries, eager to improve their own education systems, turn to Australia for advice.
- **Great place to live** – Australia offers an attractive lifestyle that is safe, stable and friendly. It has a very diverse multicultural society which helps international students to feel at home. You will benefit from a quality education and a good standard of living.
- **Post Study Work Visa** – Upon graduating with a degree from Australia, students are now allowed to work on the Post Study Work Visa scheme. Contact your local BCIE office for more details.
- **Work once you graduate** – In certain cases there may be the opportunity for you to work in Australia if you have studied in a field in which you intend to work once you graduate. This depends on whether the related occupation is on the Skilled Occupations List (SOL). The SOL is a list of skilled occupations that are in need in Australia. In general terms employment opportunities are good for international students graduating with qualifications in skill shortage subjects.
- **Value for money** – Tuition fees are internationally competitive which, combined with a low cost of living compared to other Western economies, represents good value for money.

Are you ready to study in Australia? Are you ready to find an education institution that is perfect for you? Then contact BCIE, who will assist you in choosing the right course and education institution. We will guide you through the application process and also offer you Student Visa Guidance which will ensure that you successfully embark on your studies! Our Visa success rate is currently 100% for students who opt to use our services and follow our advice to the letter. Use our services and you will have a stress-free application process.

## For more information please contact:


<b>Lagos</b>	<b>Mob:</b> 08145935517	<b>Email:</b> studyabroad_lagos@bcie.co.uk
<b>Abuja</b>	<b>Mob:</b> 08066788636	<b>Email:</b> govt@bcie.co.uk
<b>Ghana</b>	<b>Mob:</b> 0244828577	<b>Email:</b> ghana@bcie.co.uk
<b>Pakistan</b>	<b>Mob:</b> 03338354851	<b>Email:</b> manager_islamabad@bcie.co.uk
<b>Kenya</b>	<b>Mob:</b> 0722815178	<b>Email:</b> kenya@bcie.co.uk



**Curtin University (02637B)** 1

**Location:** Western Australia  
**City:** Perth


Curtin University is Western Australia's largest and most multi-cultural university. They have a strong commitment to international engagement with Australia's third largest international student population. Curtin has more than 50,000 students studying all over the world. This includes over 10,000 international students from 120 countries studying at our Perth, Sydney and other Australian locations.



**Edith Cowan University (00279B)** 2

**Location:** Western Australia  
**City:** Joondalup, Perth


Edith Cowan University (ECU) is located in Perth; a beautiful, friendly and safe city packed with boutiques, art galleries, eateries and cafés, cinemas, nightclubs and music venues. ECU has about 23,500 students, with over 4,000 international students representing 104 countries – making ECU a truly multi-cultural environment. ECU offers three campuses in Western Australia, each offering a modern, vibrant location for study and learning. Their campuses feature up-to-date facilities including wireless internet, 24-hour access to computer labs and libraries with open study spaces outside office hours.



**Education & Training International (00020G, 01723A)** 3

**Location:** Western Australia  
**City:** Perth

Education and Training International (ETI) is a branch of the Western Australian government's Department of Training and Workforce Development and is responsible for the recruitment and admission of international students into Western Australia's TAFE Institutes and government schools. Each year over 4,000 international students and more than 100,000 Australian students choose to study at one of ETI's partner TAFE Institutes in Western Australia. ETI delivers courses in partnership with TAFE institutes in metropolitan Perth and regional areas of Western Australia.



**Murdoch University (00125J)** 4

**Location:** Western Australia  
**City:** Perth

At Murdoch University in Perth, there are more than 22,000 students and 2,000 staff from across 90 different countries with a desire to discover, use their imaginations and ultimately make a difference. They embrace free thinking and encourage their students to share ideas, pool knowledge and find new ways of thinking. Across Australia, they are recognised for excellent teaching, ground-breaking research and a high number of satisfied students.





### Central Queensland University (00219C)

**Location:** Queensland  
**City:** North Rockhampton

7

Central Queensland University (CQU) is widely renowned as one of the most accessible and inclusive universities in Australia and its graduates are among the highest paid in the country. With a presence that spans from Cairns in the north to Melbourne in the south, and even further to the west, CQU has one of the largest and fastest-growing footprints of any university in Australia, with six locations in Central Queensland, and campuses in Brisbane, Sydney and Melbourne, it's likely you'll find a location to suit your needs.



### Griffith University (00233E)

**Location:** Queensland  
**City:** Gold Coast

8

Established in 1971, Griffith University has now come to be regarded as one of Australia's most innovative tertiary institutions and one of the most influential universities in the Asia-Pacific region. A founding member of Innovative Research Universities Australia (IRU-Australia), Griffith delivers a whole new student experience with its innovative approach to research, training and learning. Griffith University allows you to choose where you want to learn. With five campuses in the dynamic Brisbane-Gold Coast region you have ready access to the state capital city's social, cultural and recreational facilities and the attractions of the State's top surfside tourist destination. With over 3,500 full time staff and some 43,000 students including more than 11,000 international students from over 123 nations, Griffith is the ideal location to combine study with a great lifestyle.



### Bond University (00017B)

**Location:** Queensland  
**City:** Robina, Gold Coast

9

The 2013 Good Universities Guide rates Bond University the most five stars out of any university in Australia for educational experience. They offer accelerated degrees, which means you graduate up to 12 months ahead of the rest by studying three semesters per year. Bond University also has Australia's lowest Student to Staff Ratio. Australian in character yet international in perspective, Bond offers globally focused course content and exchange opportunities in over 20 countries, meaning you'll be professionally and culturally set up to work anywhere in the world.



### University of Newcastle (00109J)

**Location:** New South Wales  
**City:** Callaghan, Newcastle

10

The University of Newcastle is a research-intensive university. It is ranked in the top 3% in the world by QS World University Rankings 2012 and Times Higher Education World University Rankings 2012. University of Newcastle has two main campuses, the largest, set on 140 hectare natural bushland site, is Callaghan, 12 kilometres from the city centre of Newcastle. The other main campus is located on a picturesque 85 hectare site at Ourimbah on the Central Coast, halfway between Newcastle and Sydney.



### Flinders University (00114M)

**Location:** South Australia  
**City:** Adelaide

5

Flinders University enjoys a well-justified reputation for its excellence in teaching and research. It has a long-standing commitment to enhancing educational opportunities for all and a proud record of community engagement. Flinders is an outward-looking and culturally-inclusive university that meets exacting national and international standards in both teaching and research. Their main campus is in Adelaide, Australia's most liveable and one of its most affordable cities. It is also a friendly and safe city for international students, with 23,000 students from more than 120 countries studying there.



### Swinburne University of Technology (00111D)

**Location:** Melbourne  
**City:** Hawthorn, Victoria

11

Swinburne is consistently among the highest ranked universities in Melbourne for education experience by the Good Universities Guide, including for teaching quality, graduate satisfaction and getting a job. Swinburne are among the worlds top 400 (top 3%) universities in the prestigious Academic Ranking of World Universities (ARWU) and ranked equal tenth among Australian universities and third within Victoria.



### Deakin University (00113B)

**Location:** Melbourne  
**City:** Burwood, Victoria

6

Deakin is Australia's 9th largest university with over 42,000 students, of whom approximately 8,000 are international students from over 100 countries. Deakin University is renowned for its outstanding student support, its choice of four vibrant and friendly campuses, as well as its flexible study modes and options. Deakin boasts the latest teaching and learning technologies and has won several recognitions for its teaching and research success.



### La Trobe University (00115M)

**Location:** Melbourne  
**City:** Bundoora, Victoria

12

Ranked as the leading Victorian University for student satisfaction in the 2009 Sweeney Research Student Report, La Trobe University provides every possible opportunity to ensure that your time at the University is intellectually stimulating and personally satisfying. La Trobe University is a multi-campus institution. In addition to the Melbourne campus, La Trobe Universities reach extends across the state of Victoria, with campuses in the cities of Bendigo, Mildura, Shepparton and Albury-Wodonga.

# Explore Discover {Study} Perth Australia Work Enjoy Live

Supported by



Education is the quality that defines our next generation, and choosing where to study is an important decision.

StudyPerth is your guide to finding the right place to start your future. We work with education institutions at all levels, from primary to university, and across all fields, from Accounting to Visualisation Technology courses, in Perth, Western Australia.

Perth offers a unique place to study, our city attracts leading thinkers and teachers from around the world, reaching international standards of excellence in education and industry.

Perth offers what other cities can't – the chance to be part of a growing, economically strong city which stills holds lifestyle, safety and community as important traditions.

We have just begun the journey into Perth's new future, and we invite you to join us.



[www.asm.edu.au](http://www.asm.edu.au)  
CRICOS CODE 03257F

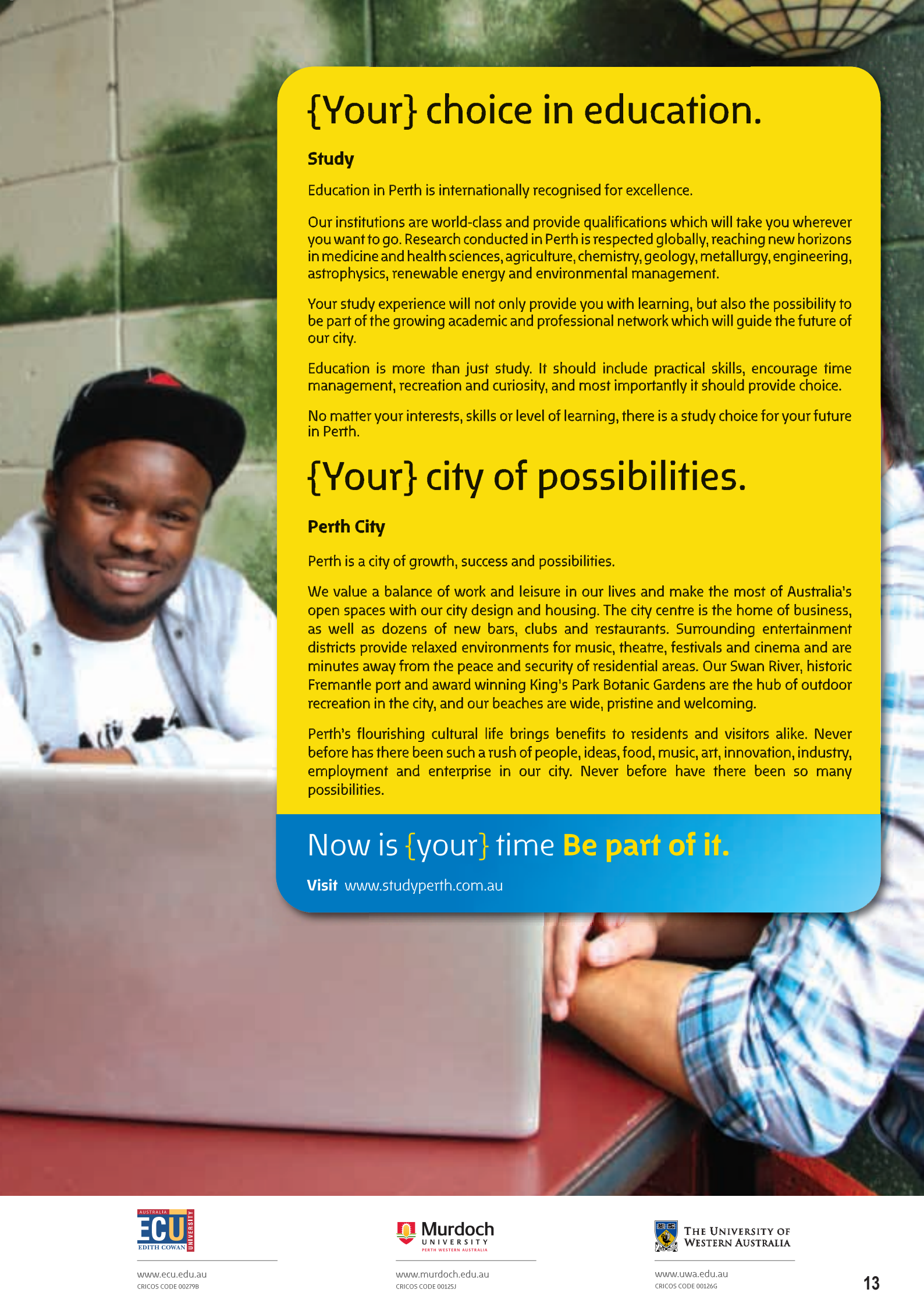
Curtin College

[www.curtincollege.edu.au](http://www.curtincollege.edu.au)  
CRICOS CODE 02042G



Curtin University

[www.international.curtin.edu.au](http://www.international.curtin.edu.au)  
CRICOS CODE 00301J



# {Your} choice in education.

## Study

Education in Perth is internationally recognised for excellence.

Our institutions are world-class and provide qualifications which will take you wherever you want to go. Research conducted in Perth is respected globally, reaching new horizons in medicine and health sciences, agriculture, chemistry, geology, metallurgy, engineering, astrophysics, renewable energy and environmental management.

Your study experience will not only provide you with learning, but also the possibility to be part of the growing academic and professional network which will guide the future of our city.

Education is more than just study. It should include practical skills, encourage time management, recreation and curiosity, and most importantly it should provide choice.

No matter your interests, skills or level of learning, there is a study choice for your future in Perth.

# {Your} city of possibilities.

## Perth City

Perth is a city of growth, success and possibilities.

We value a balance of work and leisure in our lives and make the most of Australia's open spaces with our city design and housing. The city centre is the home of business, as well as dozens of new bars, clubs and restaurants. Surrounding entertainment districts provide relaxed environments for music, theatre, festivals and cinema and are minutes away from the peace and security of residential areas. Our Swan River, historic Fremantle port and award winning King's Park Botanic Gardens are the hub of outdoor recreation in the city, and our beaches are wide, pristine and welcoming.

Perth's flourishing cultural life brings benefits to residents and visitors alike. Never before has there been such a rush of people, ideas, food, music, art, innovation, industry, employment and enterprise in our city. Never before have there been so many possibilities.

Now is {your} time **Be part of it.**

Visit [www.studyperth.com.au](http://www.studyperth.com.au)

# Study in Australia at Griffith University

- ▶ **We're ranked in the top 5% worldwide**  
Academic Ranking of World Universities (ARWU), 2013.
- ▶ **We're Australia's fastest growing university precinct**  
\$320 million facilities upgrade across our 5 campuses.
- ▶ **We offer a practical approach to teaching**  
Work integrated learning internships and Industry Mentoring Programs.
- ▶ **We have support services to help you succeed**  
International Student Advisors, Griffith Mates (student mentors) and Student Success Advisors.
- ▶ **Post-Study Work visa opportunities in Australia**  
Recent eligible graduates can apply to the Department of Immigration and Border Protection (DIBP) to spend 2-4 years in Australia following your studies [immi.gov.au](http://immi.gov.au)



## For more information contact



Miss Amaka Egbe - Griffith University In-Country Representative  
BCIE Lagos - Australia and USA Branch  
4th Floor, Valley View Plaza, 99 Opebi Road, Ikeja, Lagos

Telephone: 012914078 Mobile: 08067933972

Email: [griffith\\_nigeria@bcie.co.uk](mailto:griffith_nigeria@bcie.co.uk)

**qibt**

Queensland, Australia

in association with





# IT'S TIME TO MAKE IT HAPPEN



## STUDY AT CQUNIVERSITY AUSTRALIA

At CQUniversity we offer a wide variety of programs taught by award winning, well networked academics. Combined with our competitive fee structure, diverse range of scholarships and support services, it is easy to see why, when the time comes to make that all important decision, thousands of international students have made CQUniversity their first choice.

**QS STARS**  
RATED FOR EXCELLENCE

2014

ACCESS

ONLINE

INTERNATIONALISATION

- » As a dual sector university we offer a comprehensive range of over 100 programs including pathways, undergraduate, postgraduate coursework and research higher degrees. Our merger with CQ TAFE has allowed us to offer a number of vocational education and training options such as nursing. We also offer a number of English language programs to suit all levels of competency. You can choose to study English language as a course on its own or as a pathway to one of our undergraduate diplomas or degrees.
- » Many of our programs contain placements and work integrated learning to allow you to put theory into practice and gain professional experience, graduating work-ready. A number of our programs also give you the option of undertaking a ten week internship, at no added cost or duration to your studies, which will give you an edge in the global job market.
- » We are committed to offering flexible study options that meet your needs. You will be able to choose from full-award certificates through to research higher degrees; non-award options through our CQUGlobal programs; single unit study; or cross-institutional. You will also be able to take advantage of our three term per year system, and the added flexibility of full-time study on-campus or part-time study by distance education.
- » We have the largest national network of campuses across Australia and are continuing to expand. Three of these campuses are located in some of the top 50 best student cities in the world; Brisbane #23, Melbourne #2 and Sydney #4 (QS Best Student Cities in the World 2015).
- » Our extensive support services are designed to help you throughout your learning journey and achieve your goals. We will be there from the moment you enquire right through to graduation and when you become part of our 75 000 member alumni network.
- » Scholarships and funding are available as financial support to international students from diverse backgrounds. The Australia Awards Scholarship is funded by the Australian government to support people from developing countries to undertake full time undergraduate or postgraduate study and we encourage you to apply for any scholarships you may be eligible for.



INT-AD-140665\_AfricaAustraliac

For more information visit [cqu.edu.au/international](http://cqu.edu.au/international)

**BE WHAT YOU WANT TO BE**  
[cqu.edu.au](http://cqu.edu.au)

CRICOS Provider Codes: 00219C

# Study in the USA...

The United States has one of the world's finest university systems, with outstanding programs in virtually all fields.

International students today have a wide variety of destinations to choose from when trying to make a decision on where to pursue their studies. Studying abroad is a major investment and it is important for students to make an informed choice, based on facts. The US is a choice destination for thousands of students, and below are some of the reasons that these students decide to study in the US:

## Top ranked education

The US offers some of the most esteemed, top ranked education anywhere in the world, diverse cities, beautiful parks, artistic, cultural, political and athletic events and a very multicultural population. The US education system offers international students the most varied set of education options in the world. International students can pursue anything from nuclear science to aviation to film.

## Multicultural Environment

The US is one for the most multicultural and diverse countries in the world. International students will find living in the US a life changing experience. The US spans six time zones and each state has its own customs and culture.

## Choice


Students have a wide choice of institution to match their academic and social interests, you will find over 4,900 accredited colleges, universities, and institutes providing both undergraduate and graduate students with choices in more than 900 fields of study.

## Highly Innovative

US universities are world leaders in cutting-edge technology and are dedicated to providing the same resources to students. Familiarising students with the latest technology in science, engineering and related fields is of great importance

## Work while you study


In certain cases international students may typically work on campus for up to 20 hours per week while school is in session. Full time employment is allowed during breaks and vacation periods.



**Auburn University**  
Location: Auburn, Alabama

1


With nearly 1,000 international students, Auburn University's student body represents more than 100 countries. Auburn University has developed into one of the largest universities in the South, remaining in the educational forefront with its traditional blend of arts and applied science, and changing with the needs of today while living with a respect for the traditions and spirit that are Auburn.



**Colorado State University**  
Location: Fort Collins, Colorado

2

Colorado State University is the embodiment of the state of Colorado. With a firm foundation in its heritage, an eye always to the future, and its efforts concentrated on building the best place to live and learn today, the university is proud to be a leader in the state and nation. With over 150 programs of study, they offer a depth and breadth of academic programs found only at a major research university – your course of study is wide open.



**Drew University**  
Location: Madison, New Jersey

3

Located in the picturesque and friendly borough of Madison, New Jersey, Drew's 186 acre, wooded campus is within walking distance of the Madison train station, which offers direct service to Midtown Manhattan's New York Penn Station. The university is known for its small class sizes and personal attention to students. Ninety-four percent of Drew's full-time faculty members hold terminal degrees in their areas of expertise, which makes high-quality mentorship the hallmark of a Drew education.



**Florida Atlantic University**  
Location: Boca Raton, Florida

4

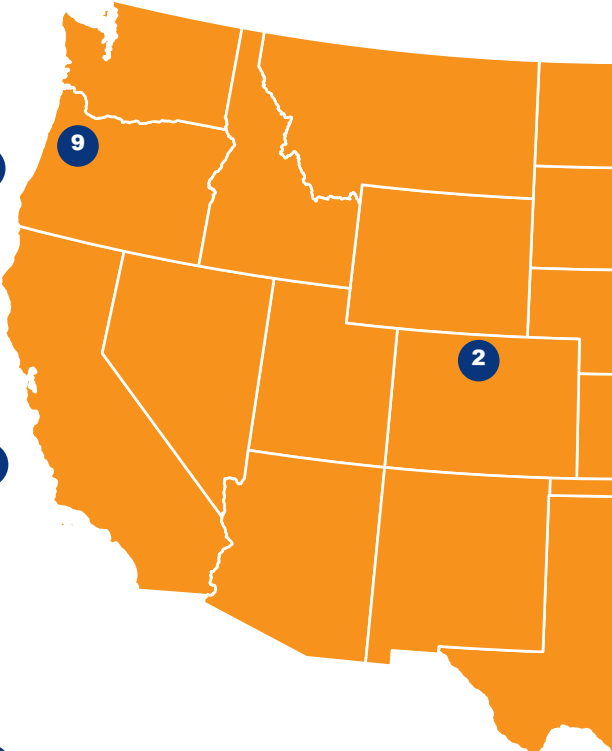
People from every walk of life find a place at FAU. Students choose from more than 170 degree programs, faculty researchers utilize more than 40 research centres and the community engages hundreds of cultural and educational events every year. Since day one, FAU has pushed the bounds of higher education. Now, 50 years later, the University serves more than 30,000 freshmen, transfers and graduate students at sites throughout its six-county service region in southeast Florida.




**Florida International University**  
Location: Greater Miami, Florida

5

As Miami's first and only public research university, offering bachelors, masters, and doctoral degrees, FIU is worlds ahead in its service to the academic and local community. Designated as a top-tier research institution, FIU emphasizes research as a major component in the university's mission. Located in the vibrant, edgy and globally-connected city of Miami they pride themselves on the amazing learning experience that their faculty and staff provide to more than 54,000 students in two campuses and three centres including FIU Downtown on Brickell and the Miami Beach Urban Studios.






**George Mason University**  
Location: Fairfax County, Virginia

6


George Mason University is a university characterized by global vision, global presence, and global accomplishment in education, outreach, and research. George Mason University is recognised as one of the most multicultural university campuses in the United States. With students from more than 120 countries along with faculty and staff members from across the globe, Mason is proud to provide a welcoming place to live, learn, work, and study.



**JOHNSON & WALES UNIVERSITY**  
**Johnson & Wales University**  
Location: Providence, Rhode Island

7

Johnson & Wales University (JWU) has acquired a world renowned reputation for its excellence in education, faculty and facilities. JWU is recognised as one of the most distinguished career focused institutions in the United States. No matter what the career goal is JWU will be the passport to a successful future! JWU has more than 16,000 students; of these, more than 1,000 are foreign students from more than 89 different countries. JWU offers undergraduate and graduate degree programs in business, hospitality, culinary arts, technology and education. Preparing students for successful careers is the cornerstone of the university's educational philosophy.



**Marshall University**  
Location: Huntington, West Virginia

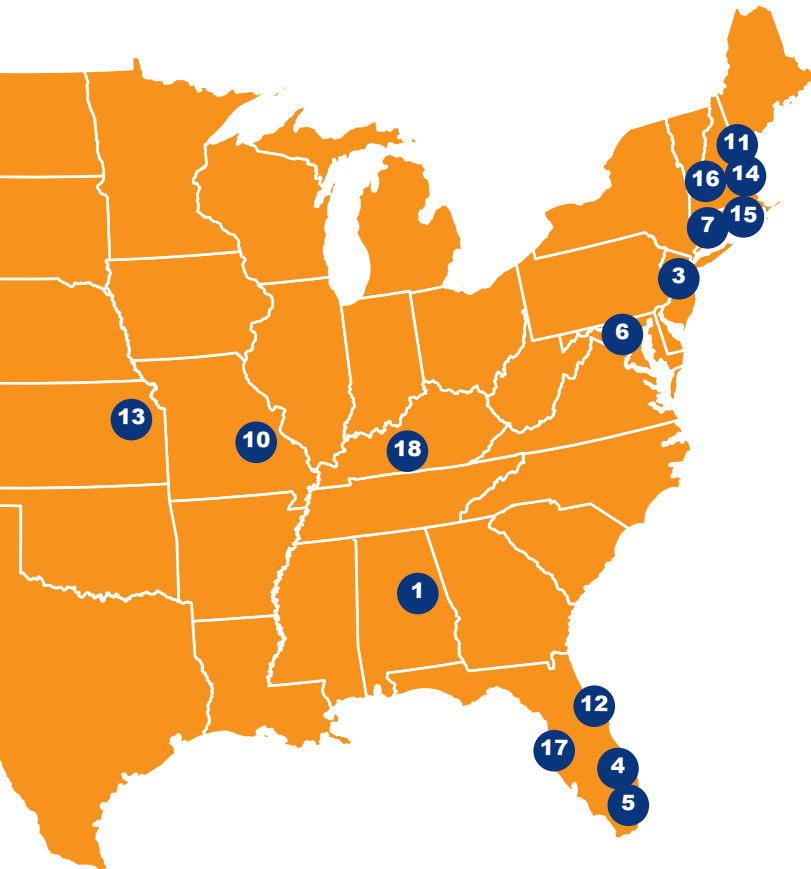
8

Marshall University provides innovative undergraduate and graduate education that contributes to the development of society and the individual. The University actively facilitates learning through the preservation, discovery, synthesis, and dissemination of knowledge. Marshall University offers programs which encourage individual growth through the attainment of scholarship, acquisition of skills, and development of personality.

## For more information please contact:

**Lagos** Mob: 08145935517 Email: studyabroad\_lagos@bcie.co.uk  
**Abuja** Mob: 08066788636 Email: govt@bcie.co.uk  
**Ghana** Mob: 0244828577 Email: ghana@bcie.co.uk  
**Pakistan** Mob: 03338354851 Email: manager\_islamabad@bcie.co.uk  
**Kenya** Mob: 0722815178 Email: kenya@bcie.co.uk





### University of Kansas

Location: Lawrence, Kansas

13

KU has become a major public research and teaching institution of 28,000 students and 2,600 faculties on five campuses (Lawrence, Kansas City, Overland Park, Wichita, and Salina). Its diverse elements are united by their mission to educate leaders, build healthy communities, and make discoveries that change the world.



### University of Massachusetts Boston

Location: Boston, Massachusetts

14

The University of Massachusetts Boston is nationally recognized as a model of excellence for urban public universities. The scenic waterfront campus, with easy access to downtown Boston, is located next to the John F. Kennedy Library and Presidential Museum and future home to the Edward M. Kennedy Institute for the United States Senate. With a 16:1 student-to-faculty ratio, students easily interact with professors because most teaching occurs in small class sizes.



### University of Massachusetts Dartmouth

Location: North Dartmouth, Massachusetts

15

UMass Dartmouth distinguishes itself as a vibrant, public research university dedicated to engaged learning and innovative research resulting in personal and lifelong student success. The University serves as an intellectual catalyst for economic, social, and cultural transformation on a global, national, and regional scale. Just one hour from Boston; the 700 acre campus is located between Providence, Rhode Island and Cape Cod, less than one hour by car from the famed sailing city of Newport, Rhode Island and Nantucket, Massachusetts and close to numerous beaches.



### University of Massachusetts Lowell

Location: Lowell, Massachusetts

16

UMass Lowell is a public university committed to preparing our students for work in the real world— solving real problems and helping real people— by providing an affordable high-quality education. Whether you're pursuing a career path or still searching for one, UMass Lowell is the ideal place to discover and achieve your purpose. An education at UMass Lowell will get you ready to take on the world.



### University of New Hampshire

Location: Durham, New Hampshire

11

The University of New Hampshire combines the living and learning environment of a New England liberal arts college with the breadth, spirit of discovery, and civic commitment of a land-grant research institution. UNH spans all fields of study and unites them through interdisciplinary programs, labs, research centres, libraries, internships, and fieldwork. Warmly supported and encouraged by their faculty mentors, students participate directly in assisting in the University's historic mission of enriching society through the creation and application of new knowledge.



### University of South Florida

Location: Tampa, Florida

17

The University of South Florida is a high-impact, global research university located in beautiful Tampa Bay on Florida's spectacular west coast. It is one of the largest public universities in the nation, and among the top 50 universities, public or private, for federal research expenditures. The university is one of only four Florida public universities classified by the Carnegie Foundation for the Advancement of Teaching in the top tier of research universities, a distinction attained by only 2.3 percent of all universities.



### Western Kentucky University

Location: Bowling Green, Kentucky

18

Western Kentucky University (WKU) prepares students of all backgrounds to be productive, engaged, and socially responsible citizen-leaders of a global society. The University provides research, service and lifelong learning opportunities for its students, faculty, and other constituents. WKU enriches the quality of life for those within its reach. As a leading American university with international reach, WKU is engaged in internationally acclaimed, student-and-learning-centred academic programs.



### Oregon State University

Location: Corvallis, Oregon

9

Oregon State is a leading research university located in one of the safest, smartest, greenest small cities in the nation. Situated 90 miles south of Portland, and an hour from the Cascades or the Pacific Coast, Corvallis is the perfect home base for exploring Oregon's natural wonders. Oregon State University has always been a place with a purpose – making a positive difference in quality of life, natural resources and economic prosperity in Oregon and beyond.



### Southeast Missouri State University

Location: Cape Girardeau, Missouri

10

Southeast offers a world-class academic experience at an affordable cost. The university's 200 areas of study emphasize national accreditation, experiential learning and career preparation. In addition to our small class sizes, our faculty and staff genuinely care about your success. With nearly 12,000 students, Southeast is an ideal size to take advantage of critical learning and extracurricular opportunities.



### Southern New Hampshire University

Location: between Manchester and Hooksett, New Hampshire

11

Southern New Hampshire University is a small, private university of about 3000 full time and 10,000 part time students located about an hour north of Boston in Manchester, a city noted for its quality of life. SNHU has a long history of internationalization with a large number of international students from more than 65 countries. No matter where you're from, SNHU can help you go places.



### University of Central Florida

Location: Orlando, Florida

12

The University of Central Florida is the second-largest university in the nation. Located in Orlando, Florida, UCF and its 12 colleges provide opportunities to 61,000 students, offering 210 degree programs from UCF's main campus, hospitality campus, health sciences campus and its 10 regional locations. UCF was ranked as the nation's No. 3 "Up-and-Coming" university in the 2015 U.S. News & World Report's Best Colleges rankings.



Study in the USA:

# A world of opportunities await you.

With nearly 1,000 students from over 70 countries, Southern New Hampshire University is a truly international university. Plus, we are located just one hour north of Boston, which makes SNHU a great place for you to learn, live, and reach your goals.

## SAVE TIME AND MONEY

Our innovative programs allow you to complete your degree in less time, saving you time *and* money.

- SNHU's three-year Bachelor of Business program (Degree in Three) can save you a year's tuition costs.
- Our top-up Bachelor programs (one or two years) in Business and Liberal Arts reduce degree completion time.
- Choose from more than 20 MBA specializations that take as little as 12-15 months to complete.

## OUR GRADUATES GO PLACES

Join a growing list of SNHU graduates that have been hired by leading companies in a wide variety of industries, including:

- American Express
- AT&T
- ESPN
- Coca-Cola
- Ernst & Young
- General Motors
- Hewlett-Packard
- IBM
- MasterCard
- PepsiCo
- Reebok International Ltd.
- Ritz-Carlton Hotels
- T-Mobile
- Walt Disney World Resorts

Southern  
New Hampshire  
University

[www.snhu.edu/ebrochure](http://www.snhu.edu/ebrochure)



# Study in the UK with a scholarship of up to £2500

GCU offers scholarships of up to £2500 for self-funded international students. High-quality programmes and award-winning support make us a top choice for students from over 100 countries.

**At GCU you will find:**

- A wide range of subjects including Applied Instrumentation & Control, Banking & Finance, Business, Computing, Engineering, Energy & Environmental Management and Public Health
- Located in the heart of the vibrant city of Glasgow, host city for the Commonwealth Games 2014
- A selection of postgraduate programmes are available at our London campus [www.gculondon.ac.uk](http://www.gculondon.ac.uk)
- Rated 2nd in the UK for international student satisfaction (ISB, Summer 2013)
- January and September start dates available



Brighter futures begin with GCU



[www.gcu.ac.uk](http://www.gcu.ac.uk)

**Kingston University**  
London

## Study in the UK at Kingston University

**Why choose Kingston University?**

- Innovative, cutting-edge courses that include strong links with industry, work placement opportunities and career skills
- Real diversity - with students from 151 countries
- Just 25 minutes by train from central London

**Undergraduate and postgraduate courses**

- Business, Management and Law
- Human Resource Management and Accounting and Finance
- Pharmaceutical and Biological Sciences
- Aerospace, Automotive and Mechanical Engineering
- Civil Engineering and Construction Management
- Computing, Information Systems and Software Engineering
- International Relations, Economics, Film and Journalism

[www.kingston.ac.uk/international](http://www.kingston.ac.uk/international)

**Scholarships**

Kingston University offers over 60 scholarships every year to international students. Each scholarship is worth £3,500 per year of study and they are available to both undergraduate and postgraduate students. The University awards scholarships based on academic merit, financial need and what you intend to do after completing your course.

For more information about all of our scholarships, visit: [www.kingston.ac.uk/internationalscholarshipsandbursaries](http://www.kingston.ac.uk/internationalscholarshipsandbursaries)

**For more information, contact:**

T: + 44 (0)20 8417 3411  
E: [international@kingston.ac.uk](mailto:international@kingston.ac.uk)  
[www.kingston.ac.uk/international](http://www.kingston.ac.uk/international)





# MSc Public Health - Health Promotion at Leeds Beckett University

**W**e have been providing specialist postgraduate health promotion training for over forty years, and have always kept up to date with the dynamic changes taking place in public health in the UK and globally. Our course develops the theoretical knowledge and practical skills needed to promote and protect public health and wellbeing within communities.

Focusing on the social determinants of health, the course equips students to fulfil a variety of roles in health promotion and public health, working in any organisation that has a role in health improvement. We have a large, experienced group of staff with an international reputation for teaching and research

in health promotion. The Centre for Health Promotion Research has a track record for its evaluation work, research with communities, commitment to tackling inequalities in health, and providing an evidence base for practice. The course team publishes widely in the health promotion field. Students come from a wide variety of backgrounds and countries, providing the opportunity to share experiences, learn from each other and develop collaborative practice. Our graduates will be able to commission, design, plan, implement and evaluate health promotion interventions. Our students find jobs as health improvement/health promotion specialists, public health consultants, and generally

wherever there is a health and wellbeing role. The course is also recognised by the Institute of Health Promotion and Education.

**To find out more about our courses please contact:**

**Leeds Beckett University Nigeria Representative (Lagos):**

**Tel: 013427663**

**Mob: 081-08151627**

**Email: A.Omotoso@leedsbeckett.ac.uk**

**Leeds Beckett University Nigeria Representative (Abuja):**

**Tel: 08109532617**

**Mob: 09021742328**

**Email: F.S.Ahmed@leedsbeckett.ac.uk**

## Feedback from our graduates:

"This course has challenged and changed me. It is relevant to my work setting and my organisation is already enjoying the fruits of my studies."

"I had the best experience ever while studying at the institution and with the wealth of knowledge that I gained in the course, I want to promise nothing but commitment as I practice."

"I especially appreciate your effort as a team within the faculty in delivering quality education which has been very helpful and given me a new perspective on practicing as a health promoter. It is without a doubt that the team is great and very supportive to offering unforgettable learning experience to their students."



## BCIE Student Feedback:

**Emmanuel Samuel**

VICTORIA ISLAND, NIGERIA

BCIE has made my studying in the UK easy and fast. I owe it to them all. God bless them.

**Olabisi Olatunji**

VICTORIA ISLAND, NIGERIA

My experience with BCIE was so helpful. I got all the necessary information and assistance that aided my application. I was more confident to come for my study here in the UK due to the support I received.

**Job Nsor Napoleon Agbor**

VICTORIA ISLAND, NIGERIA

I must heatedly appreciate the staff of BCIE for their concern, encouragement and directive. I must as a matter of fact commend the steadfast and objective approach of Adenike Abiola, to ensure that my dream came true.

## A selection of Postgraduate Public Health courses within BCIE's network

University	Course Title	Country	Duration
Anglia Ruskin University	MSc Public Health	UK	1 Year
Bangor University	MSc Public Health and Health Promotions	UK	1 Year
Bournemouth University	MSc Public Health	UK	1 Year
University of Brighton	MSc Public Health	UK	1 Year
Cardiff Metropolitan University	MSc Applied Public Health	UK	1 Year
Cardiff University	MPh Public Health	UK	1 Year
University of Chester	MPh Public Health	UK	1 Year
City University London	MPh Public Health	UK	1 Year
University of Dundee	MPh Public Health	UK	1 Year
University of Glasgow	MPh Public Health	UK	1 Year
Glasgow Caledonian University	MSc Public Health	UK	1 Year
University of Hertfordshire	MPh Public Health (Online)	UK	2-5 Years
University of Hull	MSc Health Studies	UK	1 Year
Leeds Beckett University	MSc Public Health and Health Promotions	UK	1 Year
University of Liverpool	MPh Public Health	UK	1 Year
London Metropolitan University	International Public Health Nutrition MSc	UK	1 Year
Newcastle University	MSc Public Health and Health Services	UK	1 Year
University of Salford	MSc Public Health	UK	1 Year
Sheffield Hallam University	MA Public Health	UK	1 Year
University of Sunderland	MSc Public Health	UK	1 Year
University of Worcester	Public Health MSc	UK	1 Year
University of York	MPh Public Health	UK	1 Year
Bond University (00017B)	Master of Public Health Nutrition	AUSTRALIA	2 Years
Deakin University (00113B)	Master of Public Health	AUSTRALIA	18 Months
Edith Cowan University (00279B)	Master of Public Health	AUSTRALIA	2 Years
Flinders University (00114M)	Master of Public Health	AUSTRALIA	18 Months
La Trobe University (00115M)	Master of Public Health	AUSTRALIA	2 Years

Information on this table is correct at time of printing and is correct to the best of our knowledge (2014)

LEEDS BECKETT UNIVERSITY

## The journey of your lifetime starts here

With 190 years of quality teaching, Leeds Beckett University is one of the most popular in the UK. We offer excellent teaching in an exciting learning environment and an unforgettable student experience.

With a population of 751,500, Leeds is located in the centre of the UK, easily accessible by air, rail and road and is just over two hours from London by train.

From modern facilities and great research and learning resources, to fantastic support services and guaranteed accommodation for international students, there are lots of reasons to make Leeds Beckett University your first choice.

- Accounting & Finance
- Art & Graphic Design
- Civil Engineering & Construction Management
- Economics
- Events Management
- Health & Biomedical Sciences
- Human Resource Management
- International Foundation Year
- International Relations & Politics
- Marketing & Retailing
- Music, Sound & Performance Technology
- Psychology & Social Sciences
- Architecture, Landscape & Design
- Business & Management
- Computing & Information Technology
- Education & Childhood Studies
- Film & Performing Arts
- Hospitality & Tourism Management
- Interactive Media, Games & Animation Technology
- International Masters
- Law
- MBA
- Public Relations & Journalism
- Sport

Email: [internationaloffice@leedsbeckett.ac.uk](mailto:internationaloffice@leedsbeckett.ac.uk) Telephone: +44 113 812 1111

[www.leedsbeckett.ac.uk/international](http://www.leedsbeckett.ac.uk/international)





# UNIVERSITY OF Hull

Established in 1928, the University of Hull has a distinguished history of providing quality education and rich life experience to students from around the globe. With over 19,000 students and 2000 international students from over 100 countries, the University prides itself on offering a traditional education in a modern and challenging, learning environment.

Hull has maintained its position among the leading mainstream English universities in each of the last six National Student Surveys, which measure student satisfaction – most recently, 90% of our students expressed satisfaction with their experience.

[www.hull.ac.uk/international](http://www.hull.ac.uk/international)



## STUDY IN THE ENERGY CAPITAL OF EUROPE

[WWW.ABDN.AC.UK](http://WWW.ABDN.AC.UK)

The University of Aberdeen is a charity registered in Scotland No.SCO13683.

Founded in 1495, and today ranked in the top 1% of the world's universities, the University of Aberdeen boasts a distinguished global reputation for excellence in research and teaching. Over the years, five Nobel Prizes have been awarded for work carried out or begun at Aberdeen, and currently 90% of our research activity is of 'international quality'.

93% of our graduates enter directly into work, further study or training within six months of graduating. Our attraction also lies in our world-class facilities, and the care and support that we provide to all our students. These combined strengths attract an ever-growing, diverse international student community that is drawn from 120 different countries.

The University offers a broad range of programmes at Foundation, Undergraduate, and Postgraduate level. For more information about our programmes, scholarships, facilities, and campus accommodation please contact us at [sras@abdn.ac.uk](mailto:sras@abdn.ac.uk) or call: +44 (0)1224 272090.

The University of Aberdeen was voted 'Education Provider of the Year 2013' by the African Forum Scotland.





UNIVERSITY OF  
**Southampton**

# Study with the best. Join a selecting University

- Top 100 University in the World
- Top 20 University in the UK
- Located on the sunny South coast of England, surrounded by beautiful sceneries
- Only 70 minutes by train from London
- No 2 in Electrical and Electronic Engineering
- No 3 in Mechanical Engineering
- No 7 in Arts and Design
- Over 90% of our Computer Science graduates found a job within 6 months after graduation
- 11th in UK for volume and quality of Research

“My quest for knowledge about cutting-edge technology led me to choose the University of Southampton due to its ranking as virtually the best in electronics engineering in the UK. One of the aspects I have enjoyed most here has been the laboratory experiments where we get to build different kinds of circuits and get them to work.”



**Arinze Ekwosimba,**

MEng in Electronics Engineering with Wireless Communication

The University congratulates Arinze for achieving a First Class Honours and for his success being offered a good graduate job.

Contact: Mrs Karen Arnold, Regional Director for Africa on email: [karen.arnold@soton.ac.uk](mailto:karen.arnold@soton.ac.uk) for further information.

**[www.southampton.ac.uk/international](http://www.southampton.ac.uk/international)**





# Up to **£6000** unlimited scholarships available for all students awards based on academic merit.

- Campus based institution at the heart of Manchester City Centre
- Join over 3,000 international students
- 6 intakes per year for postgraduate courses in the Business School

## Over 400 courses including:

- |  |                      |
|--|----------------------|
| ■ Architecture and Built Environment                           | ■ Healthcare         |
| ■ Art and Design   | ■ Journalism         |
| ■ Bioscience and Drug Design                                   | ■ Law                |
| ■ Business   | ■ Management         |
| ■ Computer Science and IT                                      | ■ Media              |
| ■ Engineering (Civil, Mechanical, Electrical, Aero, Petroleum) | ■ Nursing (PG)       |
| ■ English Study Programme                                      | ■ Psychology         |
| ■ Environment  | ■ Physiotherapy      |
| ■ Finance and Accounting                                       | ■ Public Health      |
|  | ■ Quantity Surveying |

[www.salford.ac.uk](http://www.salford.ac.uk)

## What our students say about BCIE

### Edgar Moses

KENYA  
INTERNATIONAL COLLEGE OF MANITOBA



I really enjoyed the services that BCIE gave me in my quest to pursue an internationally recognized degree. With all the confusion that arises while trying to choose a school coupled with my inadequate knowledge of visa application, BCIE helped me find an institution, guided me through the visa process and I eventually made it to Canada in well recognised university. To anyone who has dreams to study in the UK and Canada, I strongly suggest that you let BCIE be your first stop... they will answer all your questions and give you meaningful advise that you will forever appreciate. Leah and Beverly in Kenya are kind and loving ladies. I miss them... But too bad it's them who helped me get to Canada! :)

### Kafilah Omotoyosola

NIGERIA  
UNIVERSITY OF WORCESTER

My stay at the University of Worcester was a splendid experience. It brought out the best in me and I had never known the potential I possessed until I got here. Today, I can confidently critique any research paper and I can make a logical argument through critical thinking and reflection. My leadership skills have also improved greatly. All thanks to BCIE for helping me out with my applications.

### Bright Foli

GHANA  
UNIVERSITY OF ABERDEEN

The staff of BCIE Ghana provided a perfect guidance towards preparing my document for application to gain admission. I compiled the entire necessary document and presented it at the office in Accra and after some few minutes my application for admission was processed. I was then called by a staff of BCIE that I have successfully secured admission at the University of Aberdeen. BCIE worked assiduously to ensure the early release of my CAS and even went further to help with my visa application process. BCIE gave me expert advice on how to apply for the Tier 4 visa to make sure that the UK Border Agency does not deny me the visa. To my surprise, they also directed me on how to secure accommodation at the school and also gave me a pre-departure guide after my visa was issued. I couldn't even believe the more when BCIE told me they don't charge a penny for all the services the render. I mean, I paid "NOTHING" for all the services the rendered to me. It was "FREE OF CHARGE". I highly recommend BCIE to anyone who has intentions of studying in the UK, Australia, Canada, Dubai or USA. The staffs of BCIE are friendly, hardworking, dedicated and you will never regret going to BCIE.

### Ahmad Naveed Malik

PAKISTAN  
DE MONTFORT UNIVERSITY



It was truly a wonderful experience which I had with BCIE. I personally believe without their guidance and support the road of filling the visa case and choosing an appropriate university which suits my career would not had been easy. Services of BCIE are worth appreciable and excellent in all means. Staff is very kind humble and cooperative to every individual who tends to seek career counseling and guidance. They help out of the way to every student until he/she gets satisfied by their services. I feel greatly indebted to Mam Naz for her continuous cooperation guidance and services given to me for my career counseling and completing my Visa Process.

### Muhammad Abbas Arif

PAKISTAN  
BOURNEMOUTH UNIVERSITY



It is a long and tiresome process of getting admission in any foreign university. When I finally decided to apply for an MSc degree I did not know the first place to start. With BCIE team, I was able to find the right course and University of my liking, go through the application process and finally apply for VISA process as smoothly as possible. BCIE's team members are real professionals, as they will timely guide you to achieve your aim. For me, BCIE team has been a great support and my admission in UK for MSc would not have been possible without their tedious efforts. Anyone willing to go for higher education, BCIE is the place to start!

### Anum Jalil

PAKISTAN  
UNIVERSITY OF SALFORD

Being a student of BCIE I feel proud and I always get good and right advice towards my future. BCIE team is very helpful and very co-operative. I recommend any students to come here and discuss their plan and their goals



# Obtaining Your Student Visa - The Ultimate Challenge

## The Visa Pathway

### BCIE will show you the way

If you plan to study in the UK you will need a 'Tier 4 (General) Student Visa'. To obtain your visa you will need to score a certain number of points under the 'Points Based System' (PBS). This system was introduced by the UKVI in an attempt to both streamline and make more transparent the entire visa application process. In 2015 the Biometric Identification Document (BID) is being introduced and we will give you advice on this

The good news is that you may get an answer from the UKBA a little bit more quickly - but the bad news is that this may simply mean that you get a refusal letter sooner rather than later!

This is where the expertise and track record of BCIE comes into play. We have a student visa success rate in excess of 97% and even where some of our students get a refusal, we pull out all the stops to turn the decision around. In each of our offices we have fully trained visa specialists and they will help you throughout the visa application process. This is where the visa expertise of the BCIE team can make all the difference - often turning those bitterly disappointing refusal letters into joyous student visas.

If you would like to study in Australia the BCIE team currently has a 100% student visa success rate! As long as you follow our advice and as long as you are a genuine student and meet the 'Genuine Temporary Entrant' (GTE) requirements you will have an excellent chance of obtaining your Australian visa through BCIE.

However obtaining a student visa is no easy task as any student who has attempted to apply on their own will tell you. The whole process is complicated, time consuming and daunting. Therefore it is always best to apply for your visa in the first place through one of the BCIE offices. In this way you may well avoid an initial visa refusal - and this is important given that such a refusal would stay on your records at the Embassy or High Commission.

**So how long does it take to obtain a visa?** We always advise our students that obtaining admission into one of our universities is just the tip of the iceberg and that the real challenge still lies ahead i.e. obtaining your student visa. Each case is different and much depends on which country you decide to study in. Typically it may take 2 or 3 months to obtain a student visa for the UK, Australia or the USA and up to 6 months to obtain a Canadian study permit. Therefore it's really important you visit your nearest BCIE office and start the ball rolling well in advance of your intended departure date.

**What is involved in the visa application process?** In all cases you will need to submit meticulous paperwork with supporting documentation. However our BCIE visa protocol officers have been rigorously trained and they are there to hold your hand and help you to prepare and submit such documentation.

As for studying in the UK and the USA, you will be required to attend an interview. Again we are here to help you and the rule is 'Don't Panic!' Where necessary we will take you through a rigorous mock interview in preparation for the real thing.



BCIE has good working relationships with the British UKVI, Canadian, USA and Australian visa authorities. The BCIE directors are in regular contact with the entry clearance managers at the UKVI to make sure that we are completely up to date with visa policies and procedures. We carefully follow such advice and train our in-country BCIE visa specialists accordingly. In this way over the years, we have developed a good rapport with the UKVI and with the Canadian, USA and Australian visa authorities and we know from first hand experience that this strategy of working together with the visa authorities helps our students, our universities and the BCIE team.

**So - what should you do next to join the BCIE success story?** It's very easy - just go along to your nearest BCIE office whether it is in Nigeria, Ghana, Kenya, Pakistan or the UK. Our staff are there to help you navigate your way safely through those visa minefields.

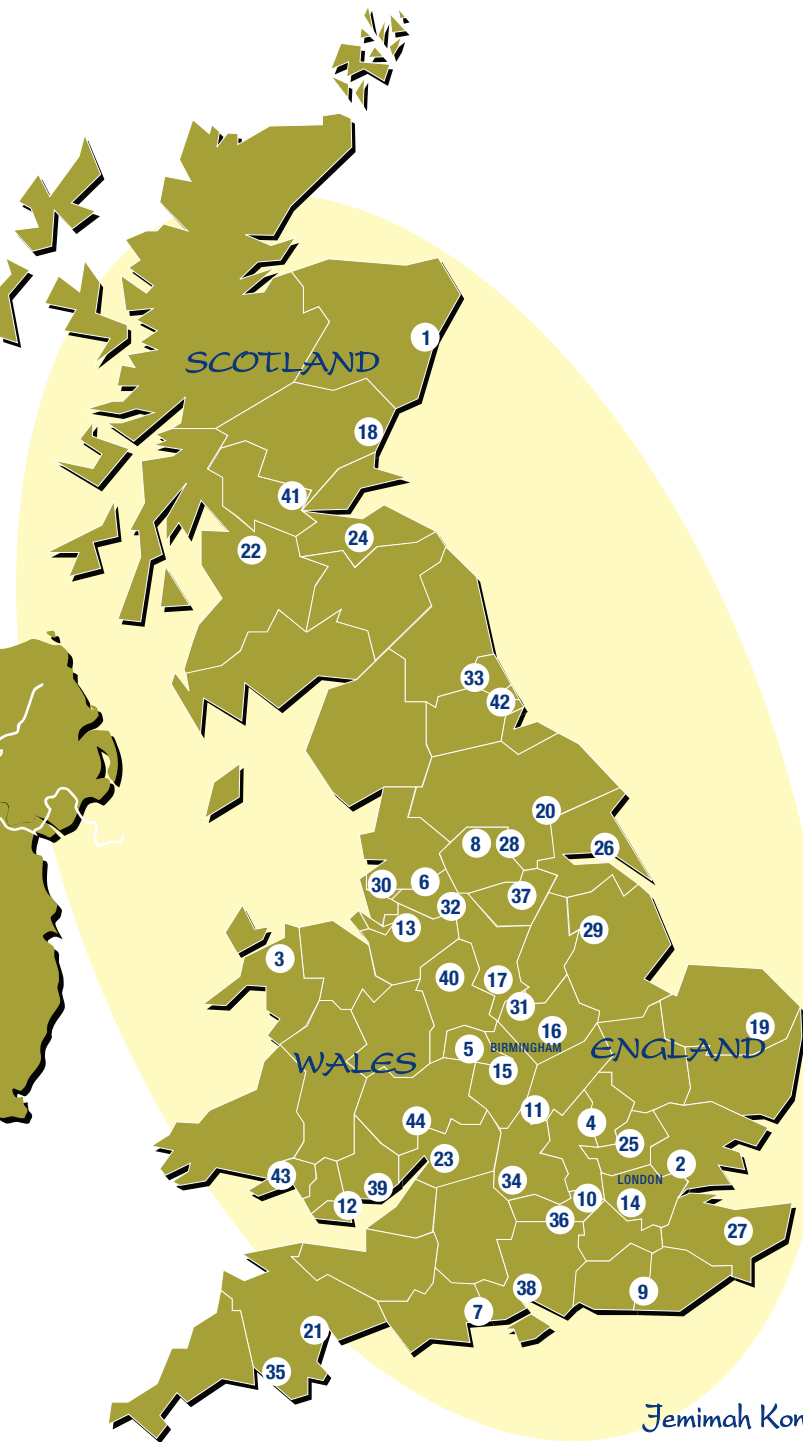
**Tempting though it is we strongly advise you not to attempt to apply for your visa on your own. Our statistics show that you are more than twice as likely to get a visa with the help of BCIE. So get the best professional help there is - it may make all the difference and help you to make that study abroad dream come true.**

### Frank Ametefe

GHANA  
UNIVERSITY OF READING

The University of Reading wrote to inform me that the British Canadian International Education (BCIE) was their accredited agent in Ghana and that I should contact them for assistance. I must say that I received a lot of support from BCIE. They helped me to put together all the paperwork for submission to the UK Border Agency. On the day of submission, I did not have any problems at all. I saw other applicants having to go up and down to pick up one document or photocopy another. Some were not even able to submit on that day and had to reschedule their appointment. Working with BCIE ensured that I did not face any of those problems. In less than a month, both my wife and I were granted visas; thanks to the meticulous work that the staff of BCIE Ghana did. I would recommend BCIE to anyone intending on studying in the UK or Canada.

# Which UK University?



TIMES RANKING	UNIVERSITY	CITY	LOCATION ON MAP	DURATION OF TRAVEL FROM LONDON (EST. BUS)	DURATION OF TRAVEL FROM LONDON (EST. RAIL)
	University of Aberdeen	Aberdeen	1	11 hrs 55 mins	7 hrs 13 mins
	Anglia Ruskin University	Chelmsford	2	1 hrs 40 mins	0 hrs 58 mins
	Bangor University	Bangor	3	8 hrs 55 mins	3 hrs 45 mins
	Birmingham City University	Birmingham	5	2 hrs 55 mins	1 hr 44 mins
	University of Bolton	Bolton	6	5 hrs 15 mins	3 hrs 50 mins
	Bournemouth University	Bournemouth	7	2 hrs 25 mins	2 hrs 33 mins
	University of Bradford	Bradford	8	4 hrs 30 mins	2 hrs 53 mins
	University of Brighton	Brighton	9	1 hrs 55 mins	1 hr 27 mins
	Brunel University	Uxbridge	10	0 hrs 40 mins	0 hrs 49 mins
	University of Buckingham	Buckingham	11	3 hrs 07 mins	0 hrs 52 mins
	Cardiff Metropolitan University	Cardiff	12	2 hrs 50 mins	2 hrs 37 mins
	Cardiff University	Cardiff	12	2 hrs 50 mins	2 hrs 37 mins
	University of Chester	Chester	13	4 hrs 55 mins	2 hrs 23 mins
	City University London	London	14	N/A	N/A
	Coventry University	Coventry	15	2 hrs 10 mins	1 hrs 19 mins
	Cranfield University	Bedford	4	1 hrs 20 mins	0 hrs 51 mins
	De Montfort University	Leicester	16	2 hrs 15 mins	1 hr 18 mins
	University of Derby	Derby	17	3 hrs 05 mins	1 hr 41 mins
	University of Dundee	Dundee	18	10 hrs 30 mins	5 hrs 53 mins
* Top 30 *	University of East Anglia	Norwich	19	3 hrs 15 mins	2 hrs 14 mins
	University of East London	London	14	N/A	N/A
* Top 30 *	University of Exeter	Exeter	21	4 hrs 05 mins	3 hrs 56 mins
* Top 30 *	University of Glasgow	Glasgow	22	8 hrs 15 mins	5 hrs 05 mins
	Glasgow Caledonian University	Glasgow	22	8 hrs 15 mins	5 hrs 05 mins
	University of Gloucestershire	Cheltenham	23	3 hrs 10 mins	2 hrs 55 mins
	University of Greenwich	London	14	N/A	N/A
	Heriot-Watt University	Edinburgh	24	8 hrs 55 mins	4 hrs 23 mins
	University of Hertfordshire	Hatfield	25	0 hrs 52 mins	0 hrs 22 mins
	University of Hull	Hull	26	5 hrs 45 mins	2 hrs 34 mins
	University of Kent	Canterbury	27	1 hrs 45 mins	1 hrs 12 mins
	Kingston University	London	14	N/A	N/A
* Top 30 *	University of Leeds	Leeds	28	4 hrs mins	2 hrs 13 mins
	Leeds Beckett University	Leeds	28	4 hrs mins	2 hrs 13 mins
* Top 30 *	University of Leicester	Leicester	16	2 hrs 15 mins	1 hr 18 mins
	University of Lincoln	Lincoln	29	5 hrs 10 mins	2 hrs 25 mins
	University of Liverpool	Liverpool	30	4 hrs 40 mins	2 hrs 48 mins
	Liverpool John Moores University	Liverpool	30	4 hrs 40 mins	2 hrs 48 mins
	London Metropolitan University	London	14	N/A	N/A
	London South Bank University	London	14	N/A	N/A
* Top 30 *	Loughborough University	Loughborough	31	2 hrs 45 mins	1 hr 29 mins
	Manchester Metropolitan University	Manchester	32	4 hrs 35 mins	3 hrs 26 mins
* Top 30 *	Newcastle University	Newcastle	33	6 hrs 25 mins	3 hrs 12 mins
	Northumbria University	Newcastle	33	6 hrs 25 mins	3 hrs 12 mins
	Oxford Brookes University	Oxford	34	1 hrs 50 mins	1 hr 27 mins
	Plymouth University	Plymouth	35	5 hrs 05 mins	4 hrs 52 mins
	University of Reading	Reading	36	1 hrs 51 mins	0 hrs 55 mins
	Robert Gordon University	Aberdeen	1	11 hrs 55 mins	7 hrs 13 mins
* Top 30 *	Royal Holloway – University of London	London	14	N/A	N/A
	University of Salford	Salford	32	6 hrs 15 mins	3 hrs 19 mins
	Sheffield Hallam University	Sheffield	37	3 hrs 15 mins	2 hrs 17 mins
* Top 30 *	University of Southampton	Southampton	38	2 hrs 30 mins	1 hr 55 mins
	University of South Wales	Newport	39	2 hrs 50 mins	2 hrs 21 mins
	University of St Mark & St John	Plymouth	35	5 hrs 05 mins	4 hrs 52 mins
	Staffordshire University	Stafford	40	4 hrs 25 mins	1 hr 35 mins
	University of Stirling	Stirling	41	9 hrs 13 mins	5 hrs 25 mins
	University of Strathclyde	Glasgow	22	8 hrs 15 mins	5 hrs 05 mins
	University of Sunderland	Sunderland	42	7 hrs 05 mins	3 hrs 44 mins
	Swansea University	Swansea	43	4 hrs 15 mins	3 hrs 28 mins
	University of West London	London	14	N/A	N/A
	University of the West of Scotland	Glasgow	22	8 hrs 15 mins	5 hrs 05 mins
	University of Worcester	Worcester	44	3 hrs 40 mins	2 hrs 51 mins
* Top 30 *	University of York	York	20	4 hrs 50 mins	2 hrs 04 mins
	York St John University	York	20	4 hrs 50 mins	2 hrs 04 mins

\* University rankings as per *The Times* and *Sunday Times University Guide* 2014  
 \* Duration of travel estimated according to National Express/National Rail

**Dr Ali Hussain**  
 PAKISTAN  
 LEEDS BECKETT UNIVERSITY

I got to know about BCIE consultant during my research on net for UK education. I got perfect information about scholarship procedure throughout from them. It makes a lot of difference when the counsellor is so much experienced. They provide realistic counselling depending upon our profile

**Jemimah Kondegri**  
 GHANA  
 SHEFFIELD HALLAM UNIVERSITY



I got to know about BCIE Ghana and the superb services they render through a trusted friend who had successfully been served by BCIE Ghana to find a school in the UK and apply for Tier 4 visa for his studies in the UK. The expert coaching and guidance I received from BCIE Ghana made my visa application process stress-free and easy and saved me the pain of being refused a visa to study in the UK because of ignorance of Tier 4 Visa application rules. I recommend that students who aspire to know all there is to know about BCIE, making a successful application for admission to UK schools, Tier 4 visas updates and application process and many other helpful information to talk to BCIE Ghana. They will gladly serve you and you will be glad you did.

# BCIE's University Network Comments...



**Ms Gerardine Togher**  
Senior International  
Development Officer  
**Sheffield Hallam  
University**



Sheffield Hallam University has been working with BCIE in Ghana since 2009. Their office provides our students with a friendly and professional environment to source reliable information and guidance. BCIE Ghana provides us with a growing number of quality students who always speak highly of BCIE staff and having met the team I can see why! I am confident in the services BCIE provide for us and our students, long may it continue!

**James Littlewood**  
International Officer  
**Bournemouth University**



Bournemouth University has a longstanding relationship with BCIE and I have no hesitation in recommending their services to you. Having BCIE representation will make your experience of applying to Bournemouth University much easier. They will explain the courses available, our entry requirements and all other aspects of university life. They will also work closely with our International Admissions Office to ensure that your application is processed as quickly as possible and that other processes, such as visa applications, go smoothly.

**Charles Magee**  
**Birmingham City University**



"My September intake from BCIE was successful. BCIE Nigeria and Ghana provide my university with quality students.

I continue to work with BCIE Nigeria because you are the overall best agency in Nigeria."



**Donal O'Connor**  
Director of Marketing and Recruitment  
**Navitas**

"Navitas has enjoyed an excellent working relationship with BCIE for a number of years and the colleges in the UK in particular have benefited greatly from the professionalism of BCIE and the great knowledge and energy of BCIE staff in Africa and Pakistan."

**Anthony Bradley**  
Regional Manager, International Marketing  
**Griffith University**



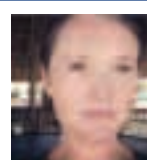
"I am the Regional Manager for Africa at Griffith University and one of my responsibilities is to explore new markets for the university in that region. I decided to work with BCIE on account of very positive comments from my counterparts in UK universities. Australian universities do not traditionally visit Nigeria: we receive many travel warnings advising that we do not travel there. And so I was a little apprehensive before participating in BCIE's education mini-fair in September last year – I needn't have been! The fair was very professionally and smoothly run, and meticulous attention was paid to the security and comfort of the participating university representatives. Furthermore we received a considerable number of applications during the fair and have continued to receive applications ever since. I am very happy to endorse BCIE and look forward to participating in the BCIE Education Roadshow in Nigeria and Ghana this year."



**Gillian Ajayi**  
Associate Director  
**Curtin University**

"I have worked with BCIE for many years, with several universities. I have found them to be highly professional, and caring of both the students and institution representatives. I attended the November 2013 exhibition in Lagos and Abuja and it was very well attended with quality, pre assessed students and very well organised. The students were a delight."

**Dr. Ainsley McIntosh**  
International Officer  
**University of Aberdeen**



"The University of Aberdeen has enjoyed a fruitful working relationship with BCIE since 2007, during which time BCIE has done a fantastic job of recruiting ever-stronger numbers of well qualified, bright students for a wide range of programmes in our portfolio. Thanks to both BCIE's UK and in-country teams, our visits are well organised, follow up is extremely efficient, and we enjoy excellent support both during our trips and on the ground. The many years' experience accrued by BCIE's staff members ensures that applicants are provided with strong support during the visa application process, which is of great value at this particularly stressful stage in the admission process. The in-country teams balance professionalism with friendliness and warmth, ensuring that our visits are not only productive but also a pleasure. I have absolute confidence in the quality and level of service that BCIE delivers, and look forward to working closely alongside our colleagues there for many years to come. Furthermore, I would have no hesitation in recommending prospective students and partner universities to engage the services of BCIE so that they too may benefit from the agency's years of excellence and experience in the field."



**Jamie Hastings**  
Regional Manager  
(Africa)  
**Robert Gordon  
University**



"BCIE has strategically located offices around West Africa and are a dominant force in the market of student recruitment. Robert Gordon University is pleased to be working as a partner to BCIE in the region and will continue to visit the regional offices and engage in exhibitions and other recruitment initiatives".

**Melissa Gibson**  
International Officer  
**University of Kent**



"BCIE and the University of Kent have been working together for almost 10 years – a testament to the support that BCIE are able to provide our prospective students throughout the university and visa application process. The offices in Ghana, Nigeria and Pakistan are welcoming, professional environments with reliable and knowledgeable staff, all of whom can demonstrate the far-reaching benefits of a UK education to potential students and their parents. It is because of this that we continue to work with BCIE and are happy to refer students to them for assistance."

**Lily Rumsey**  
Senior Recruitment Officer (Africa)  
**University of Salford**



"The University of Salford work closely with BCIE offices across Ghana, Nigeria and Pakistan due to their commitment and expertise in UK education. We value our relationship with them due to the high quality visa advice and impartial, knowledgeable student counselling from their friendly in country experts who ensure that they provide an excellent service for students across the globe. We look forward to working with BCIE even more closely in 2016 and welcoming students to our campus in Salford, Manchester"

## Universities in BCIE Network:

### UK Universities

Anglia Ruskin University  
Bangor University  
Birmingham City University  
Bournemouth University  
Brunel University London  
Cardiff Metropolitan University  
Cardiff University  
City University London  
Coventry University  
Cranfield University  
De Montfort University  
Glasgow Caledonian University  
Heriot-Watt University  
INTO Global Education Partners  
Kingston University  
Leeds Beckett University  
Liverpool John Moores University  
London Metropolitan University  
London South Bank University  
Loughborough University  
Manchester Metropolitan University  
Navitas Global  
Newcastle University  
Northumbria University  
Oxford Brookes University  
Plymouth University  
Queens University Belfast  
Robert Gordon University  
Royal Holloway, University of London  
Sheffield Hallam University  
Staffordshire University  
Study Group  
Swansea University  
University of Aberdeen  
University of Bolton  
University of Bradford  
University of Brighton  
University of Buckingham  
University of Chester  
University of Derby  
University of Dundee  
University of East Anglia  
University of East London  
University of Essex  
University of Exeter  
University of Glasgow  
University of Gloucestershire  
University of Greenwich  
University of Hertfordshire  
University of Hull  
University of Kent  
University of Leeds  
University of Leicester  
University of Lincoln  
University of Liverpool  
University of Reading  
University of Salford  
University of South Wales  
University of Southampton  
University of St Mark & St John  
University of Stirling  
University of Strathclyde  
University of Sunderland  
University of the West of Scotland  
University of West London  
University of Worcester  
University of York  
York St John University

### Canadian Universities

Bodwell High School  
Centennial College  
Fairleigh Dickinson University  
Fraser International College  
International College of Manitoba  
Lambton College  
Royal Roads University  
Seneca College  
Thompson Rivers University  
University of New Brunswick  
University of Ontario Institute of Technology  
Vancouver Island University

### Australian Universities

Bond University (00017B)  
Central Queensland University (00219C)  
Curtin College (02042G)  
Curtin University (02637B)  
Deakin University (00113B)  
Edith Cowan University (00279B)  
Education & Training International (00020G, 01723A)  
Eynesbury College (00561M)  
Flinders University (00114A)  
Griffith University (00233E)  
La Trobe University (00115M)  
MIBT @ Deakin University (01590J)  
Murdoch University (00125J)  
PIBT @ Edith Cowan University (01312J)  
QIBT @ Griffith University (01737F)  
Swinburne University of Technology (00111D)  
University of Newcastle (00109J)

### USA Universities

Auburn University  
Colorado State University  
Drew University  
Florida Atlantic University  
Florida International University  
George Mason University  
INTO Colorado State University  
INTO George Mason University  
INTO Marshall University  
INTO New York  
INTO Oregon State University  
INTO University of South Florida  
Johnson & Wales University  
Marshall University  
Oregon State University  
Shorlight Education  
Southeast Missouri State University  
Southern New Hampshire University  
University of Central Florida  
University of Kansas  
University of Massachusetts Boston  
University of Massachusetts Dartmouth  
University of Massachusetts Lowell  
University of New Hampshire  
University of South Florida  
Western Kentucky University

### Dubai Universities

Heriot-Watt University, Dubai Campus  
Murdoch University, Dubai Campus

## BCIE Offices:

### Nigeria – Lagos Victoria Island Branch

14 Muri Okunola Street  
Megamound Place  
Off Ajose Adeogun Street  
Victoria Island, Lagos  
Tel: 013427601  
Mob: 08062351535 / 07081819614  
BB Pin: 21F88769  
Email: [nigeriaikoyi@bcie.co.uk](mailto:nigeriaikoyi@bcie.co.uk)

### Nigeria – Lagos Ikeja Branch

Valley View Plaza, 99 Opebi Road  
Ikeja, Lagos  
Tel: 013427600  
Mobile: 08023379290  
BB Pin: 227017F4  
Email: [nigeriaikeja@bcie.co.uk](mailto:nigeriaikeja@bcie.co.uk)

### Nigeria – Lagos Australia and USA Branch

4th Floor, Valley View Plaza  
99 Opebi Road  
Ikeja, Lagos  
Tel: 013427673 / 013427675  
Mobile: 08145935517  
Email: [studyabroad\\_lagos@bcie.co.uk](mailto:studyabroad_lagos@bcie.co.uk)

### Nigeria – Abuja Branch

24B Djibouti Crescent  
off Freetown Street  
behind Rockview Hotel  
the 5th House after Zartech  
Wuse 2, Abuja  
Tel: 094614900 / 09093478930  
Mob: 08066788636  
BB Pin: 2845E5D5  
Email: [abuja@bcie.co.uk](mailto:abuja@bcie.co.uk)

### Nigeria – Kano Branch

1st Floor Chalet A  
Tahir Guest Palace (Annex)  
84 Lamido Road, Off Suleiman Crescent  
(Behind Niima Hotel), Nasarawa G.R.A  
Kano  
Tel: 08135403294  
Mob: 08130743252  
BB Pin: 22EE2746  
Email: [kano@bcie.co.uk](mailto:kano@bcie.co.uk)

### Nigeria – Port Harcourt Branch

2nd Floor, F. H. Jumbo House  
80 Aba Road  
Opposite Government Crafts  
Development Centre  
Port Harcourt, Rivers State  
Tel: 07085010020  
Mob: 08069278962  
BB Pin: 23156DA1  
Email: [manager\\_ph@bcie.co.uk](mailto:manager_ph@bcie.co.uk)

### Nigeria – Ibadan Branch

2nd Floor The Horizon Office Complex  
Vitas Bus Stop  
Ring Road, Ibadan  
Oyo State  
Tel: 022913532  
Mob: 08171684741  
Email: [manager\\_ibadan@bcie.co.uk](mailto:manager_ibadan@bcie.co.uk)

### Ghana – Accra Branch

Off Oxford Street  
Behind SSNIT Hospital  
Next Door to Mama Mia Restaurant  
Osu, Accra  
Tel: 0302778748  
Fax: 0302786534  
Mob: 0246015016 / 0244828577  
E-mail: [ghana@bcie.co.uk](mailto:ghana@bcie.co.uk)

### Kenya – Nairobi Branch

Amee Arcade (Formerly Rank Xerox  
House)  
Next to Unga House  
Opposite Corner Plaza  
1st Floor Parklands Road, Westlands  
PO Box 1354 - 00606, Nairobi, Kenya  
Tel: 0203754741  
Fax: 0203740463  
Mob: 0722815178 / 0733815151  
Email: [kenya@bcie.co.uk](mailto:kenya@bcie.co.uk)

### Pakistan – Islamabad Branch

Tel: 092512814195 / 09251281496  
Mob: 03338354851  
Email: [islamabad\\_pk@bcie.co.uk](mailto:islamabad_pk@bcie.co.uk)

### Pakistan – Lahore Branch

Tel: 0924235785514 / 15 / 16  
Mob: 03238400638  
Email: [lahore\\_pk@bcie.co.uk](mailto:lahore_pk@bcie.co.uk)



UK HEAD OFFICE: PO BOX 1531 | BEDFORD | MK40 9EN  
TEL: 0870 803 4317 FAX: 0870 803 4318 WEBSITE: [www.bcie.co.uk](http://www.bcie.co.uk)

GHANA

KENYA

UK

NIGERIA

PAKISTAN