



One of the largest UK based Educational Agencies

Established in 2000 – BCIE can today boast quality and professionalism both as to the numerous students it places abroad each year and the number of universities and colleges that trust us to represent them.

BCIE Offices



Study Abroad Destinations



FEATURE ARTICLES:

- MESSAGE FROM OUR DIRECTORS
- OUR SERVICES
- THE VISA PATHWAY

- BANKING AND FINANCE COURSES
- PUBLIC HEALTH COURSES
- NURSING COURSES
- STUDYING IN AUSTRALIA



British Canadian International Education Ltd

GHANA KENYA UK NIGERIA PAKISTAN

Increasing International Understanding Through Education!

A warm welcome to all our students, parents, sponsors and universities

In this issue of our Passport Magazine we have put together articles and information which you will find useful when deciding where and what to study. You will therefore find in this issue articles on Banking and International Finance, Nursing and Public Health, Studying in Australia and The Visa Pathway.

Over the last two years there has been a strong increase in demand for more world-wide locations and more universities to choose from. Therefore we have continued to diversify the BCIE global network to include more quality universities from the UK, Australia and the USA. You will not be short of choice.

As a company BCIE has continued to consolidate and expand throughout 2012 and 2013 and in early 2014 we opened another new office in Ibadan. We now have a nationwide network of seven BCIE offices in Nigeria and this illustrates our commitment to both our students and our university partners in the Nigerian market.

Despite the introduction of 'Credibility Interviews' and more demanding English Language requirements by the UK authorities in 2012/2013 we have seen a significant growth in demand for places in our Australian universities, the USA, Dubai and a wide variety of our UK universities. Traditionally the UK has been the 'Number One' destination for our International students – and it continues to be so. However our Australian universities are becoming much more active now and the American (USA) university sector finally appears to be undergoing a cultural change which means a more progressive open door philosophy towards our international students.

Here is an update for you as to recent developments at BCIE:

- The BCIE/Pearson Partnership; following nearly 18 months of fruitful discussions with Pearson we have now joined forces and set up two English Language Testing centres in the BCIE offices in Abuja (2012) and Port Harcourt (2013). These BCIE /Pearson's centres are already helping our students to prepare for the English language tests by providing intensive in-house training and exam simulation. Already proving to be a big hit with our students at both the undergraduate and post graduate levels.
- BCIE Edufairs expanded; traditionally we only ran one annual BCIE university exhibition. However in 2012, in response to strong student demand, we experimented with running two university fairs each year – in June and in October/November. The experiment was a huge success and therefore we will continue to run two fairs each year – catering for the two big student intakes in October and January each year.
- Expansion of the UK team; given the growth in demand for BCIE services we decided to expand our UK head office and recruit a Business Support and Development manager. We can now provide an even more comprehensive service to all our students, sponsors and universities.
- Greater diversification; this has been one of the stand-out characteristics of the period 2012-2014 and we have therefore expanded the BCIE University network – especially in Australia and the UK. For example the recent introduction of the Streamlined Visa Processing (SVP) innovation by the Australian government has boosted student interest in our Australian universities and made it much easier to obtain a student visa.

As regards to the future we will continue to keep a very close eye on developments in the UK, Australia and the USA. In this way we will continue to provide our students and universities with the very best service available anywhere in the world.

So, welcome to BCIE and let's make sure that, working together, we can help you make your dreams of studying abroad come true!

Dr Cliff Dedynski
Director BCIE UK

Nazmina Panju Dedynski (CANTAB)
Director BCIE UK



REGISTERED OFFICE ADDRESS: UNIT 9 STEPHENSON COURT | FRASER ROAD | PRIORY BUSINESS PARK | BEDFORD | MK44 3WH | UK
TEL: 0870 803 4317 **FAX:** 0870 803 4318 **E-MAIL:** ukheadoffice@bcie.co.uk **URL:** www.bcie.co.uk
REGISTRATION NUMBER: 7061743

The BCIE Difference:

- ✓ Thorough, detailed and up to date information about studying in the UK, Australia, the USA, Dubai and Canada.
- ✓ UK Head Office so we can help you even after you have arrived in the UK.
- ✓ Extensive BCIE University network enables us to give impartial advice.
- ✓ Representation of top quality universities in the UK, Australia and Dubai.
- ✓ Respectable offices and staff that are friendly, helpful, well trained and professional.
- ✓ Student Counsellors that have studied in, been trained in or visited the UK, Australia, Canada and the USA. There is no substitute for first hand experience!
- ✓ Approximately every 2 weeks our university network staff visit our offices – they can directly counsel you as to their university and in some cases give spot offers.
- ✓ Visa Counsellors that have applied for visas themselves and have extensive visa experience ensuring that they can advise you correctly.
- ✓ Close communication and regular meetings with the UKBA and Australian High Commission to keep up to date with any change in policies or procedures.
- ✓ Excellent visa success rates of 100% in Australia and Dubai and 98% in the UK.

Our offices can:

- Help you choose the right country to study abroad
- Help you pick the right location, university and course in the UK, Canada, Australia, Dubai or USA
- Help with scholarships, accommodation, airport pick ups, fees payments etc
- And most importantly and where our specialism lies – Help you apply for and get your student visa

Welcome to



British Canadian International Education Ltd

Background:

BCIE was set up in 1999/2000 by Dr. Cliff Dedynski and Nazmina Panju Dedynski (CANTAB). Together they have over 40 years experience in overseas education and today there are over 100 universities in the BCIE network spanning the UK, Australia, Canada, the USA and Dubai. BCIE has 11 offices worldwide; Nigeria (6), Ghana (1), Kenya (1), Pakistan (2) and the UK head office (1) – employing more than 70 well qualified and experienced staff. BCIE continues to expand and now places more than 1500 international students into their global network of universities each year, making BCIE the largest UK based student recruitment agency.

BCIE Services:

The growing BCIE team, now spanning four continents, are highly dedicated to helping our students get the education and support they need to fulfil their career aspirations.

Some of the services BCIE provide are as follows:

- Up to date impartial counselling advice aimed at helping you select the right country, university and course for your chosen career path depending on your current qualifications and aspirations.
- Comprehensive advice on the university application procedure (i.e. providing you with the University application forms and also help you to complete them).
- Information on all available scholarships – BCIE will inform you and help with the application.
- Provide you with detailed information as to the location, resources, facilities and accommodation available at the university of your choice.
- Help and advise you as to the procedure involved in obtaining your student visa and offer you an opportunity to go through a mock interview (where applicable). For Dubai, with the help of our universities, we will help you to obtain your visa so you do not even need to step into an embassy! In rare cases of visa refusals we can help you re-apply or appeal your application (we have a 96% visa success rate).

Once you have applied through BCIE and received an offer from a university, you will be required to pay part of your fees up front before you apply for your visa. Without the required deposit and/or supporting bank statements you will not meet the visa requirements of Australia, Canada, the USA or the UKBA. In addition nearly all universities now require a substantial deposit. BCIE will facilitate the payment of any deposit required to your university.

(See page 23 for more on obtaining a study visa.)

Remember we are the universities representative in your country. Take all the help and advice you will be offered. After all, you are investing a huge amount into your overseas education; you deserve to get all the quality help and assistance available through BCIE!

Your local BCIE office:

BCIE offices can currently be found in four countries across Africa and South Asia;
Opening Times (for all offices):
Monday – Friday: 9:00am – 5:00pm
Saturday: 11:00am – 4:00pm (Appointment Only)

Nigeria

Lagos: Victoria Island

Tel: 013427601

Mobile: 08062351535 / 07081819614

Email: nigeriaikoyi@bcie.co.uk

Lagos: Ikeja

Tel: 013427600

Mobile: 08023379290

Email: nigeriaikeja@bcie.co.uk

Lagos: Visa Counselling Branch, Ikeja

Tel: 013427602 / 013427603

Mobile: 07084524926

Email: nigeriaivcb@bcie.co.uk

Abuja

Tel: 094614900 / 09093478930

Mobile: 08066788636

Email: abuja@bcie.co.uk

Kano

Tel: 08135403294

Mobile: 08130743252

Email: kano@bcie.co.uk

Port Harcourt

Tel: 07085010020

Mobile: 08069278962

Email: manager_ph@bcie.co.uk

Ibadan

Tel: 022913532

Mobile: 08171684741

Email: manager_ibadan@bcie.co.uk

Ghana

Accra

Tel: 0302778748

Mobile: 0246015016 / 0244828577

Email: ghana@bcie.co.uk

Kenya

Nairobi

Tel: 023754741

Mobile: 0722815178 / 0733815151

Email: kenya@bcie.co.uk

Pakistan

Islamabad

Tel: 0092512814195 / 0092512814196

Mobile: 03338354851

Email: islamabad_pk@bcie.co.uk

Lahore

Tel: 00924235785514 / 15 / 16

Mobile: 03238400638

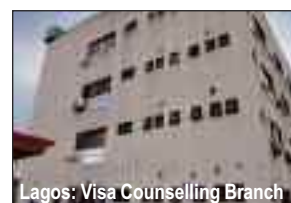
Email: lahore_pk@bcie.co.uk



Lagos: Victoria Island



Lagos: Ikeja



Lagos: Visa Counselling Branch



Abuja



Kano



Port Harcourt



Accra



Nairobi



Degrees in Banking and Finance

Studying a degree in Banking and Finance can open doors to a range of careers, both within the Banking and Finance industry and as Finance managers and directors in all sectors. Thousands study degrees in Finance in the UK every year and almost every UK university offers a degree in Finance or a degree that combines Finance with another subject such as Accounting or Business. Universities have different specialisms in Finance, but remember that if you follow a general Finance degree it can be a very competitive environment when applying against other graduates for positions in the financial sector.

A degree in Banking and Finance combines the mainstream subject of Finance with the specialist and niche subject of Banking – which is an opportunity for you to differentiate yourself in the job market.

Banking Degrees

A much smaller number of UK universities offer degrees in Banking. It can be possible to combine Banking degrees with Finance, Accounting, Economics and other business subjects. Given the importance of the banking sector to the economy of every country, a degree which includes a Banking specialism not only provides candidates with knowledge and skills suitable for entering these professions, but also provides candidates with their own niche specialisms and an 'edge' when applying for positions against hundreds of other qualified candidates. Examples of topics that might be studied in banking degrees are: international banking operations, bank financial management and bank regulation.

Islamic Banking and Finance – why choose this?

Over the past decades, Islamic banking and finance has emerged as a new and alternative model for financial intermediation. Islamic banking and finance has gained credibility and popularity and has spread worldwide to become a preferred model for one-fifth of the world's population. As a result, a number of UK universities have started teaching this subject. You can generally choose between degrees carrying this title or select one or two modules as part of a mainstream degree in Finance.

Such degrees focus on the principles of Islamic finance which espouse that financial contracts be free of (i) riba, which is an injunction protecting property rights; and (ii) gharar, which denotes deception stemming from ambiguity, asymmetric information etc. Islamic scholars generally perceive that any kind of ambiguity in the language of financial contracting leads people to gamble, which is denoted in Arabic as Maysir.

With the growth in this sector, and with countries introducing Islamic finance as an approved banking mechanism, the demand for staff appropriately educated and knowledgeable in this field is growing.

Skills and Knowledge

Generally, the basic Banking and Finance curriculum will be similar across most universities, although specialist modules reflect that university's academic staff expertise and this can vary significantly between institutions. For this reason, it is important that future students look closely at the modules offered within degrees to decide which course is most suitable in terms of their interests, their personal strengths and their future career.

What kinds of topics are studied?

Courses included in Banking and Finance degrees include financial analysis, financial planning, risk management, financial intermediation, insurance, behavioural finance, global financial markets, merger and acquisition, investment strategy, financial reporting and regulation and many more. An international focus will be integral to the study of such topics in the better courses including a comparative study of banking and finance policies and practices applied in different countries worldwide.

What kind of skills will I develop?

Universities will also include in the curriculum modules that help students develop skills in quantitative and qualitative research, statistical analysis, financial modelling, financial engineering, portfolio management etc. Students will also develop general skills useful for any workplace including critical thinking, project work and teamwork. In choosing to study financial degrees in the UK, students also expect to gain experience of living, studying and working in the UK, and through academic study, students enjoy extensive international exposure – through studying alongside fellow students from countries worldwide.

Case Studies

Real-life case studies form an important element of the learning process of many finance degrees. Case studies are studied in lectures, seminars, student group work and on occasions, universities will invite professionals to run special case study sessions, at Bangor University for example HSBC run case studies in bank lending policies.

How else will I benefit?

Many lecturers undertake research as well as lecturing, and a number of lecturers also do consultancy work. Through these activities lecturers share their findings in lectures where students can learn of the latest developments taking place in the sector.

In addition to time-tabled lectures by university staff, some universities also arrange guest lectures. At Bangor University for example, a seminar series for finance and banking students include speakers from countries worldwide e.g. ESSEC of France or professionals from within the sector such as from HSBC, The World Bank and the Central Bank of Sweden.

Many universities have set up student branches of professional organisations, which can help students get onto the first step of the career ladder. Other activities include nationwide business competitions for student teams such as the IBM Business Challenge.

Business School Alumni Associations

Many business schools have alumni associations and you could get advice about studying at different universities from alumni in your own country. Another benefit is that after graduating and returning home, your membership of your University's alumni association, offers an enriching social and business network that could help you further your career.

How will I gain admission? Entry Requirements Undergraduate

Entry requirements vary between universities. For entry onto a bachelor degree, a school-leaving qualification equivalent to the British A-level examinations is generally required. In countries such as Nigeria and Pakistan where the school-leaving qualification is not equivalent to the British A-level, the study of a 1-year foundation course is required before gaining entry onto a UK bachelor degree course.

What is a Foundation Course? A foundation course combines academic study with study skills which helps prepare international students for the different study environment of the UK. It is of A-level standard and therefore provides excellent preparation for entry onto an undergraduate degree in the UK. In the UK, foundation courses are run at universities, private colleges and further education colleges, but it can also be studied in the home country – but make sure when selecting a foundation course that you make sure it is recognised by the university you are aiming to join the following year.

Postgraduate

To gain entry onto a Masters degree in the UK, a degree of an equivalent level to the British bachelor degree is required, and British universities recognise degrees awarded in many countries worldwide. As well as the degree, decisions of entry are also based on the grade achieved. A small number of universities might require a minimum of a first class honours degree whilst the majority will require a 2nd class honours degree. A small number might accept a 3rd class honours and a pass degree. British universities have their internal procedures for converting overseas grades into UK grades for making decisions of entry, so you won't need to worry about this when applying.

As well as looking at the degree classification, some universities will need a degree in a related subject, so for entry onto a Masters in Banking and Finance degree, a bachelor degree in Finance or a related subject such as Economics or Accounting would be acceptable. Entry requirements vary, not only between universities but also between courses at the same university; therefore make sure that you research suitable courses and entry requirements in detail before making an application.

If I don't have a recognised degree but I have work experience, can I be admitted onto a Masters degree?

At some institutions, the answer is yes. At Bangor University for example, if you have at least 2 years of professional work experience that is relevant to the degree for which you are applying, you will be considered. The final decision will be based

on information provided in the application form e.g. current position, duties, responsibilities, duration in post, reference from your current employer, statement from your current employer confirming your duties and responsibilities etc.

Work placements

Some Universities in the UK will offer work placements as part of their degree, but students can also pursue a work placement by finding one themselves. Placements will vary in duration from a couple of weeks to a whole year, depending on the university. Placements are valuable and can aid students' understanding of what is taught in the classroom and put theories into practice.

Islamic Banking and Finance

Nigeria Focus:

Following an approval being granted for Nigerian banks to offer Islamic banking services, Jaiz Bank has been at the forefront being the first bank to offer a fully-fledged service. Stanbic IBTC operates an Islamic banking window alongside conventional banking services and Sterling Bank has also been granted approval in principle to operate an Islamic banking window. As the Central Bank of Nigeria intensifies its efforts to release a framework for an Islamic money market for the country, more banks are expected to start offering Islamic banking windows during 2014.

The growth in provision reflects the growth in demand for Islamic banking services. Banking corporations in Nigeria will inevitably need staff that are appropriately educated and trained to operate in this specialist sector of banking. Masters degrees such as those offered at Bangor University in the UK offer specialist preparation in the field.



Bashirudeen Maishanu Mohammed (pictured above), Manager at the Central Bank of Nigeria studied MSc Islamic Banking and Finance at Bangor University in 2012/13 and commented on his experience:

'The Islamic Banking & Finance program in Bangor Business School opened my eyes to a truly scientific and contemporary approach to Islamic finance. Drawing from a rich pool of academic diversity, the program exposed me to the mechanics of conventional finance and its application to Islamic sharia principles. I thoroughly enjoyed the program. The serene and evergreen country that is Wales was a refreshing experience. I look forward to returning to Bangor for further studies in Islamic Finance.'

A selection of Banking and Finance courses within BCIE's network

University	Course Title	Level	Country	Duration
Anglia Ruskin University	Accounting and Finance BSc (Hons)	UG	UK	3 Years
Bangor University	Banking and Finance Degree BA/BSc	UG	UK	3 Years
Bangor University	Islamic Banking and Finance (MA/MSc)	PG	UK	1 Year
Bournemouth University	Accounting and Finance BA (Hons)	UG	UK	3 Years
Bournemouth University	MSc International Accounting and Finance	PG	UK	1 Year
University of Bradford	Accounting and Finance BSc (Hons)	UG	UK	3 Years
University of Brighton	Accounting and Finance BSc (Hons)	UG	UK	3 Years
Cardiff Metropolitan University	BSc International Economics & Finance	UG	UK	3 Years
Cardiff Metropolitan University	Finance MSc	PG	UK	1 Year
Cardiff University	Banking and Finance BSc (Econ)	UG	UK	3 Years
Cardiff University	Accounting and Finance MSc	PG	UK	1 Year
City University London	Banking & International Finance BSc (Hons)	UG	UK	3 Years
City University London	Banking and International Finance MSc	PG	UK	1 Year
Coventry University	Banking and Finance MSc	PG	UK	1 Year
University of Dundee	BIFin International Finance	UG	UK	4 Years
University of Dundee	MSc International Business, Accounting and Finance	PG	UK	1 Year
University of East London	International Accounting and Finance MSc	PG	UK	1 Year
University of Glasgow	Accountancy and Finance (Hons) BAcc	UG	UK	4 Years
University of Glasgow	MSc Banking and Financial Services	PG	UK	1 Year
Glasgow Caledonian University	Economics and Finance BA (Hons)	UG	UK	4 Years
Glasgow Caledonian University	MSc International Economics and Finance	PG	UK	1 Year
University of Hertfordshire	Accounting and Finance BA (Hons)	UG	UK	3 Years
University of Hertfordshire	MSc Accounting & Financial Management	PG	UK	1 Year
University of Hull	Business and Accounting (International) BA (Hons)	UG	UK	4 Years
University of Hull	Accounting and Finance MSc	PG	UK	1 Year
University of Kent	Accounting and Finance	UG	UK	3 Years
University of Kent	International Accounting and Finance MSc	PG	UK	1 Year
Kingston University	Accounting and Finance BA (Hons)	UG	UK	3 Years
Kingston University	Banking and Finance MSc	PG	UK	1 Year
University of Leeds	Banking and International Finance MSc	PG	UK	1 Year
Leeds Metropolitan University	BA (Hons) Accounting & Finance	UG	UK	3 Years
Leeds Metropolitan University	MSc Finance	PG	UK	1 Year
University of Leicester	Banking and Finance MSc	PG	UK	1 Year
University of Liverpool	Accounting and Finance BA (Hons)	UG	UK	3 Years
University of Liverpool	Finance MSc	PG	UK	1 Year
London Metropolitan University	Banking and Finance BSc (Hons)	UG	UK	3 Years
London Metropolitan University	Finance (Accounting) MSc	PG	UK	1 Year
London South Bank University	Accounting and Finance BA (Hons)	UG	UK	3 Years
London South Bank University	MSc International Banking and Finance	PG	UK	15 Months
Loughborough University	Banking, Finance and Management	UG	UK	4 Years
Loughborough University	Money, Banking and Finance	PG	UK	1 Year
Manchester Metropolitan University	Banking and Finance BA (Hons)	UG	UK	3 Years
Manchester Metropolitan University	Accounting and Finance MSc	PG	UK	1 Year
Newcastle University	Accounting and Finance BA (Hons)	UG	UK	3 Years
Newcastle University	Banking and Finance MSc	PG	UK	1 Year
University of Plymouth	Finance MSc	PG	UK	1 Year
University of Reading	MSc Investment Banking & Islamic Finance	PG	UK	1 Year
University of Salford	International Banking and Finance MSc	PG	UK	1 Year
Sheffield Hallam University	Banking and Finance MSc	PG	UK	1 Year
Sheffield Hallam University	International Finance & Banking BA (Hons)	UG	UK	3 Years
University of South Wales	Islamic Banking and Finance MSc	PG	UK	1 Year
University of Strathclyde	Accounting/Finance BA	UG	UK	4 Years
University of Strathclyde	International Banking and Finance MSc	PG	UK	1 Year
University of Sunderland	Banking and Finance MSc	PG	UK	1 Year
Swansea University	International Banking and Finance MSc	PG	UK	1 Year
University of West London	Finance and Islamic Banking MSc	PG	UK	1 Year
University of the West of Scotland	International Financial Management MSc	PG	UK	1 Year
University of Worcester	Business, Finance & Accountancy BA (Hons)	UG	UK	3 Years
University of Worcester	Finance & Management MSc	PG	UK	1 Year
University of York	Accounting and Financial Management MSc	PG	UK	1 Year
York St John University	Accounting and Finance BA (Hons)	UG	UK	3 Years
Central Queensland University (00219C)	Bachelor of Accounting	UG	AUSTRALIA	3 Years
Curtin University (02637B)	Accounting and Finance BCom	UG	AUSTRALIA	3 Years
Deakin University (00113B)	Bachelor of Commerce (Finance)	UG	AUSTRALIA	3 Years
Deakin University (00113B)	Master of International Finance	PG	AUSTRALIA	18 Months
Griffith University (00233E)	Master of Finance	PG	AUSTRALIA	2 Years
La Trobe University (00115M)	Bachelor of Finance	UG	AUSTRALIA	3 Years
La Trobe University (00115M)	Master of Financial Analysis	PG	AUSTRALIA	3 Years
Centennial College	Accounting	UG	CANADA	3 Years
Centennial College	Accounting	PG	CANADA	1 Year
Southern New Hampshire University	Bachelors in Finance	UG	USA	4 Years
Southern New Hampshire University	Master of Finance	PG	USA	15 Months

Information on this table is correct at time of printing and is correct to the best of our knowledge (2014)

STUDY IN THE UK AT BANGOR UNIVERSITY



No.1 in the UK for Accounting & Finance
No.2 in the UK for Electronic Engineering
(RAE 2008)

One of the top Universities in the UK for:

- ◆ Computer Science
- ◆ Electronic Engineering
- ◆ International Law - LLM and LLB
- ◆ Islamic Banking and Finance
- ◆ Marine Geoscience
- ◆ MBA
- ◆ Nursing
- ◆ Public Health

- ◆ Safe and cost effective city
- ◆ Generous scholarships
- ◆ Good student support
- ◆ Guaranteed accommodation
- ◆ High student satisfaction rates
- ◆ September and January starts
- ◆ Top 45 UK University
(Times World Rankings 2013)

For more information please contact:
Sarah Jones-Morris, Country Manager
E-mail: s.jones-morris@bangor.ac.uk
T: +44 (0) 1248 388 843

For Nigeria contact:
M: 08060136178 T: 01-3427672
E-mail: bangor_nigeria@bcie.co.uk

www.bangor.ac.uk

WANT TO BE THE BOSS? WE CAN GET YOU TO THE TOP

- Robert Gordon University offer Undergraduate, Postgraduate and PhD courses
- Study Full Time in the UK or by Distance Learning from anywhere in the world
- We accept C6 WAEC English
- Competitive tuition fees and flexible payment plans

Please Contact:
Mr Jamie Hastings
Robert Gordon University, International Office
Schoolhill, Aberdeen, Scotland, AB10 1FR
E: j.hastings1@rgu.ac.uk
T: 009 44 1224262246

To view other programmes visit
www.rgu.ac.uk/betheboss



Popular courses include:

- MSc Oil and Gas Law
- MSc Oil and Gas Accounting
- MSc Corporate Social Responsibility and Energy
- MSc IT for the Oil and Gas Industry
- MSc Oil and Gas Engineering
- MSc Petroleum Production Engineering
- MSc Drilling and Well Engineering
- MSc Architectural Studies
- MSc Fashion Management
- MSc International Hospitality and Tourism Management
- MSc International Business
- MSc Energy Management
- MBA Oil and Gas Management





**Sheffield
Hallam
University**

**Transform
Yourself**

with Sheffield Hallam University



Studying at Sheffield Hallam University could transform your career and your future because we help you to develop the skills and experience you need to find your dream job

We are one of the UK's largest universities with more than 37,000 students, we offer excellent facilities, a great choice of over 740 undergraduate and postgraduate courses and an unforgettable student experience.

We offer

- £1,000 discount for courses starting in September 2014 - for full terms and conditions visit www.shu.ac.uk/international/scholarships-bursaries
- courses designed to meet business and industry demand
- many professionally accredited courses
- 24 hour learning centres and computing facilities
- dedicated international student support
- a range of scholarships
- a friendly and multicultural environment with a low cost of living
- courses starting in January and September
- distance learning courses

We also offer one year top up courses suitable for HND holders who want to up skill to a degree qualification.

Choose a career-enhancing course from our broad range of undergraduate, postgraduate and PhD options.

- art and design
- architecture
- biosciences
- built environment
- business and management
- computing
- engineering
- finance
- forensics
- health
- law
- media and communications
- physiotherapy
- social sciences
- sport
- teacher education
- tourism hospitality and events.

For more information
Visit www.shu.ac.uk/international

Connect to us
Facebook: [Sheffield Hallam University International](#)
Twitter: [@SHUoverseas](#)

Education 
Innovative. Individual. Inspirational.

navitas

Study in the UK with Navitas

Navitas works in partnership with nine of the UK's most dynamic universities to offer international students pathways to a wide range of degree programmes. With our supportive environment, you can commence your studies on a UK university campus and progress seamlessly to each of the stages of your study – through to your degree award.



an Affiliate College of



ICRGU at Robert Gordon University

Location: Scotland
City: Aberdeen

1

Robert Gordon University has an outstanding reputation for teaching excellence and is first in the UK for graduate employment. ICRGU is located right in the heart of Robert Gordon University's Garthdee campus in Aberdeen. This spectacular and modern campus is situated on the banks of the River Dee, and is surrounded by grassy banks and trees. Garthdee is only 15–20 minutes from the city centre on a direct bus route.



an Affiliate College of



BCUIC at Birmingham City University

Location: Midlands, England
City: Birmingham

2

One of the UK's most innovative universities Birmingham City University has an ongoing reputation as one of the UK's leading universities, thanks to its high quality teaching and fantastic facilities. Located on the stunning Bourneville Campus, just minutes from the world famous Cadbury World and factory.



an Affiliate College of



ICWS at Swansea University

Location: Wales
City: Swansea

3

Swansea University is a research-led university that has been making a difference since 1920. The university community thrives on exploration and discovery, and offers the right balance of excellent teaching and research, matched by an enviable quality of life.

ICWS is located on the stunning parkland seafront campus of Swansea University overlooking Swansea Bay and the Gower Peninsula – the first place to be designated as an Area of Outstanding Natural Beauty (AONB) by Natural England on behalf of the Welsh Assembly Government.



BCIE is a group of highly experienced workers who helped me in applying for admission into Swansea University. I really recommend them coz they put their best in making you comfortable and happy. So BCIE is the best Agency to work with for other students in search of admission.
(Tetede Oluwatobi Solomon – ICWS, Abuja)



STUDY WITH PLYMOUTH UNIVERSITY

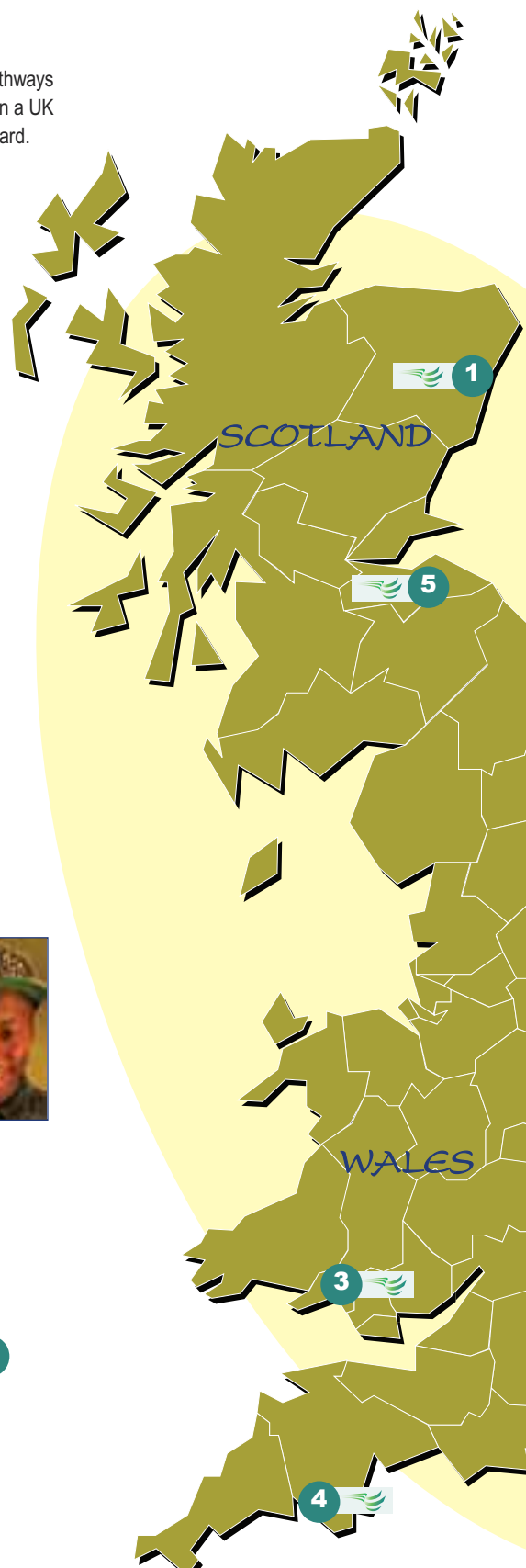
An Associate College of Plymouth University

PUIC at Plymouth University

Location: South West, England
City: Plymouth

4

The University of Plymouth has an educational history dating back to 1862. It is a friendly, dynamic and innovative university with approximately 30,000 students on full and part-time programmes of study including around 3,000 students from over 100 countries. Plymouth also benefits from its attractive location with a vibrant city life and culture, set in dramatic countryside and close to some of Britain's most beautiful beaches with excellent sailing and surfing opportunities.





an Associate College of
Edinburgh Napier
UNIVERSITY

EIC at Edinburgh Napier University 5

Location: Scotland
City: Edinburgh

Edinburgh Napier offers an exciting and supportive learning experience. With a student population of over 15,000 representing more than 100 countries, situated in Scotland's capital city, Edinburgh is internationally recognised as one of the best cities in the world in which to live.



an Associate College of
Anglia Ruskin
University
Cambridge & Chelmsford

CRIC at Anglia Ruskin University 6

Location: East Anglia, England
City: Chelmsford and Cambridge

The excellent facilities at CRIC are essential in providing the support and resources required to make the most of your studies. In the last five years Anglia Ruskin University have invested over £80 million in campus developments, with a further £124 million planned over the next 5 years. Situated in the cities of Cambridge and Chelmsford (a town in the county of Essex just 35 minutes from London) there are many social activities available while you enjoy your studies.



BCIE is a very competent and efficient company, they easily find the solution by guiding and leading you to the right career path for a greater future... one word success.
(Halima Dange – CRIC, Victoria Island)



an Associate College of
University of Hertfordshire

HIC at University of Hertfordshire 7

Location: South East, England
City: Hatfield

The University of Hertfordshire is ranked as the No. 1 modern university in the UK (The Complete University Guide, 2011). HIC is located in the historic town of Hatfield, which is just a 20 minute train journey from Central London. The University of Hertfordshire offers some of the best UK university sports facilities and a world-class 1,500 capacity entertainment venue.



in association with
Brunel
UNIVERSITY
LONDON

LIBT at Brunel University 8

Location: London
City: London

Brunel University is a modern, dynamic institution, which prides itself on the quality of its academic programmes and the applied nature of its research activity. Situated in Uxbridge, west London, the university is dedicated to providing a world class education for its 13,000 students, which includes an international student population of more than 2,000, from over 113 different countries.



I wish to thank the entire management of BCIE Kano for their relentless support towards my admission process. My dream has been to study Computer Science in a reputable University in the United Kingdom and BCIE has helped me realize that without too much hassle. I recommend the services of BCIE to whoever is in need of a guide to further his studies especially in terms of choosing the right course and Visa application.
(Abdul Munaf Isah Yunusa – LIBT, Kano)

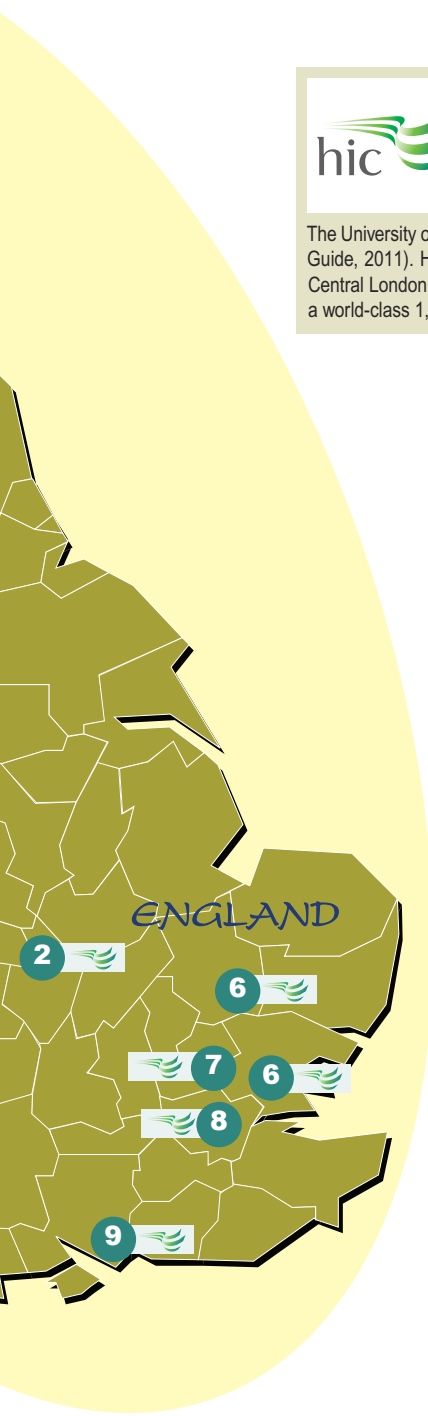


an Associate College of
University of Portsmouth

ICP at University of Portsmouth 9

Location: South West, England
City: Portsmouth

The University of Portsmouth is one of the top modern universities to feature in the Times Higher Education Student Experience Survey (2010). Modernisation and investment is evident right across the university campus, including investing £11.5m in the library facilities and £12m on a cutting-edge, purpose built premises for the Business School. ICP is situated in the heart of Portsmouth's city centre campus, just a five minute walk from the main railway station and within easy reach of the beach.



For more information please contact one of our Navitas Representatives or your nearest BCIE Office:

Lagos:	Tel: 013427608	Mob: 07087773049	Email: navitas_lagos@bcie.co.uk
Port Harcourt:	Tel: 07013689688	Mob: 08107863672	Email: navitas_abuja@bcie.co.uk
Abuja:	Tel: 07062113306	Mob: 08167890901	Email: navitas_ph@bcie.co.uk

Why Study in Australia?

International students today have a wide variety of destinations to choose from when trying to make a decision on where to pursue their studies. Studying abroad is a major investment and it is important for students to make an informed choice, based on facts. Australia is a choice destination for thousands of students, and below are some of the reasons why students decide to study in Australia:

- **Unique experience** – Studying in Australia promotes innovative, creative and independent thinking. You'll learn to work as part of a team, to communicate effectively with others and to develop the practical skills and intellectual abilities you need for global success.
- **International reputation** – The Australian education system has a strong international reputation and is known for its effective structure and innovative policy developments. Many other countries, eager to improve their own education systems, turn to Australia for advice.
- **Great place to live** – Australia offers an attractive lifestyle that is safe, stable and friendly. It has a very diverse multicultural society which helps international students to feel at home. You will benefit from a quality education and a good standard of living.
- **Post Study Work Visa** – Upon graduating with a degree from Australia, students are now allowed to work on the Post Study Work Visa scheme. Contact your local BCIE office for more details.
- **Work once you graduate** – In certain cases there may be the opportunity for you to work in Australia if you have studied in a field in which you intend to work once you graduate. This depends on whether the related occupation is on the Skilled Occupations List (SOL). The SOL is a list of skilled occupations that are in need in Australia. In general terms employment opportunities are good for international students graduating with qualifications in skill shortage subjects.
- **Value for money** – Tuition fees are internationally competitive which, combined with a low cost of living compared to other Western economies, represents good value for money.

Are you ready to study in Australia? Are you ready to find an education institution that is perfect for you? Then contact BCIE, who will assist you in choosing the right course and education institution. We will guide you through the application process and also offer you Student Visa Guidance which will ensure that you successfully embark on your studies! Our Visa success rate is currently 100% for students who opt to use our services and follow our advice to the letter. Use our services and you will have a stress-free application process.

For more information please contact:

Lagos	Mob: 013427675	Email: studyabroad_lagos@bcie.co.uk
Abuja	Mob: 07036133394	Email: govt@bcie.co.uk
Ghana	Mob: 0244828577	Email: ghana@bcie.co.uk
Pakistan	Mob: 03325347828	Email: manager_islamabad@bcie.co.uk
Kenya	Mob: 0722815178	Email: kenya@bcie.co.uk



Curtin University
(02637B) 1

Location: Western Australia
Perth

City: Perth

Curtin University is Western Australia's largest and most multi-cultural university. They have a strong commitment to international engagement with Australia's third largest international student population. Curtin has more than 50,000 students studying all over the world. This includes over 10,000 international students from 120 countries studying at our Perth, Sydney and other Australian locations.



Edith Cowan University
(00279B) 2

Location: Western Australia
City: Joondalup, Perth

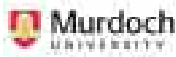
Edith Cowan University (ECU) is located in Perth; a beautiful, friendly and safe city packed with boutiques, art galleries, eateries and cafés, cinemas, nightclubs and music venues. ECU has about 23,500 students, with over 4,000 international students representing 104 countries – making ECU a truly multi-cultural environment. ECU offers three campuses in Western Australia, each offering a modern, vibrant location for study and learning. Their campuses feature up-to-date facilities including wireless internet, 24-hour access to computer labs and libraries with open study spaces outside office hours.



Education & Training International
(00020G, 01723A) 3

Location: Western Australia
City: Perth

Education and Training International (ETI) is a branch of the Western Australian government's Department of Training and Workforce Development and is responsible for the recruitment and admission of international students into Western Australia's TAFE Institutes and government schools. Each year over 4,000 international students and more than 100,000 Australian students choose to study at one of ETI's partner TAFE Institutes in Western Australia. ETI delivers courses in partnership with TAFE institutes in metropolitan Perth and regional areas of Western Australia.



Murdoch University (00125J) 4

Location: Western Australia
City: Perth

At Murdoch University in Perth, there are more than 22,000 students and 2,000 staff from across 90 different countries with a desire to discover, use their imaginations and ultimately make a difference. They embrace free thinking and encourage their students to share ideas, pool knowledge and find new ways of thinking. Across Australia, they are recognised for excellent teaching, ground-breaking research and a high number of satisfied students.





Central Queensland University (00219C)

Location: Queensland
City: North Rockhampton

7

Central Queensland University (CQU) is widely renowned as one of the most accessible and inclusive universities in Australia and its graduates are among the highest paid in the country. With a presence that spans from Cairns in the north to Melbourne in the south, and even further to the west, CQU has one of the largest and fastest-growing footprints of any university in Australia, with six locations in Central Queensland, and campuses in Brisbane, Sydney and Melbourne, it's likely you'll find a location to suit your needs.



Griffith University (00233E)

Location: Queensland
City: Gold Coast

8

Established in 1971, Griffith University has now come to be regarded as one of Australia's most innovative tertiary institutions and one of the most influential universities in the Asia-Pacific region. A founding member of Innovative Research Universities Australia (IRU-Australia), Griffith delivers a whole new student experience with its innovative approach to research, training and learning. Griffith University allows you to choose where you want to learn. With five campuses in the dynamic Brisbane-Gold Coast region you have ready access to the state capital city's social, cultural and recreational facilities and the attractions of the State's top surfside tourist destination. With over 3,500 full time staff and some 43,000 students including more than 11,000 international students from over 123 nations, Griffith is the ideal location to combine study with a great lifestyle.



Bond University (00017B)

Location: Queensland
City: Robina, Gold Coast

9

The 2013 Good Universities Guide rates Bond University the most five stars out of any university in Australia for educational experience. They offer accelerated degrees, which means you graduate up to 12 months ahead of the rest by studying three semesters per year. Bond University also has Australia's lowest Student to Staff Ratio. Australian in character yet international in perspective, Bond offers globally focused course content and exchange opportunities in over 20 countries, meaning you'll be professionally and culturally set up to work anywhere in the world.



University of Newcastle (00109J)

Location: New South Wales
City: Callaghan, Newcastle

10

The University of Newcastle is a research-intensive university. It is ranked in the top 3% in the world by QS World University Rankings 2012 and Times Higher Education World University Rankings 2012. University of Newcastle has two main campuses, the largest, set on 140 hectare natural bushland site, is Callaghan, 12 kilometres from the city centre of Newcastle. The other main campus is located on a picturesque 85 hectare site at Ourimbah on the Central Coast, halfway between Newcastle and Sydney.



Flinders University (00114M)

Location: South Australia
City: Adelaide

5

Flinders University enjoys a well-justified reputation for its excellence in teaching and research. It has a long-standing commitment to enhancing educational opportunities for all and a proud record of community engagement. Flinders is an outward-looking and culturally-inclusive university that meets exacting national and international standards in both teaching and research. Their main campus is in Adelaide, Australia's most liveable and one of its most affordable cities. It is also a friendly and safe city for international students, with 23,000 students from more than 120 countries studying there.



Macquarie University (00002J)

Location: New South Wales
City: Sydney

11

Macquarie University has a reputation for being Australia's best modern university. They are consistently ranked highly in international surveys, and their students are sought after by employers around the world. Macquarie achieved the maximum 5 rating outstanding performance well above world standard, in three science disciplines in the recent Australian Government Excellence in Research for Australia evaluation, and 85 per cent of the University's research activity was rated as performing at world standard or higher.



Deakin University (00113B)

Location: Melbourne
City: Burwood, Victoria

6

Deakin is Australia's 9th largest university with over 42,000 students, of whom approximately 8,000 are international students from over 100 countries. Deakin University is renowned for its outstanding student support, its choice of four vibrant and friendly campuses, as well as its flexible study modes and options. Deakin boasts the latest teaching and learning technologies and has won several recognitions for its teaching and research success.



La Trobe University (00115M)

Location: Melbourne
City: Bundoora, Victoria

12

Ranked as the leading Victorian University for student satisfaction in the 2009 Sweeney Research Student Report, La Trobe University provides every possible opportunity to ensure that your time at the University is intellectually stimulating and personally satisfying. La Trobe University is a multi-campus institution. In addition to the Melbourne campus, La Trobe Universities reach extends across the state of Victoria, with campuses in the cities of Bendigo, Mildura, Shepparton and Albury-Wodonga.

{Your} future in Perth.

Education is the quality that defines our next generation, and choosing where to study is an important decision.

Study Perth is your guide to finding the right place to start your future. We work with education institutions at all levels, from primary to university, and across all fields, from Environmental Studies to English courses, in Perth, Western Australia.

Perth offers a unique place to study, at a unique point in its history. The driving force of the Australian economy, our city attracts leading thinkers and teachers from around the world, reaching international standards of excellence in education and industry. Our cultural life has flourished alongside the economy and we are now Australia's western hub for the arts, travel and recreation.

Perth offers what other cities can't – the chance to be part of a growing, economically strong city which stills holds lifestyle, safety and community as important traditions.

{Your} choice in education.

Study

Education in Perth is internationally recognised for excellence. Our institutions are world-class and provide qualifications which will take you wherever you want to go. Research conducted in Perth is respected globally, reaching new horizons in medicine and health sciences, agriculture, chemistry, geology, metallurgy, engineering, astrophysics, renewable energy and environmental management. Our artists, musicians and actors are familiar to the world.

Perth's recent growth has also brought experts from all over the globe to our city. Our teachers and industry professionals are among the world's best, and we have Australia's busiest and most diverse jobs market. Your study experience will not only provide you with learning, but also the possibility to be part of the growing academic and professional network which will guide the future of our city.

Education is more than just study. It should include practical skills, encourage time management, recreation and curiosity, and most importantly it should provide choice. Perth provides a diverse range of courses across a number of institutions, from business qualifications to language certificates, and allows you to take the direction you want at the pace that is right for you. Vacation time and the ease of casual employment for students allow you to enjoy our state and get to know its people.

No matter your interests, skills or level of learning, there is a study choice for your future in Perth.



Supported by



Education is more than just study. It should include practical skills, encourage time management, recreation and curiosity, and most importantly it should provide choice. Perth provides a diverse range of courses across a number of institutions, from business qualifications to language certificates, and allows you to take the direction you want at the pace that is right for you. Vacation time and the ease of casual employment for students allow you to enjoy our state and get to know its people.

No matter your interests, skills or level of learning, there is a study choice for your future in Perth.

{Your} city of possibilities.

Perth City

Perth is a city of growth, success and possibilities. Recent years have seen the benefits of our resources boom flow into every part of our lives, from education to transport, and tens of thousands of people have come to see the natural beauty of Western Australia and enjoy its year-round sunshine. The new international airport, along with the Perth Arena and expanding city rail network, riverside developments and beach-fronts are shaping Perth into Australia's western gateway for tourism and investment.

We value a balance of work and leisure in our lives and make the most of Australia's open spaces with our city design and housing. The city centre is the home of business, as well as dozens of new bars, clubs and restaurants. Surrounding entertainment districts provide relaxed environments for music, theatre, festivals and cinema and are minutes away from the peace and security of residential areas. Our Swan River, historic Fremantle port and King's Park Botanic Gardens are the hub of outdoor recreation in the city, and our beaches are wide, pristine and welcoming.

Perth's flourishing cultural life brings benefits to residents and visitors alike. Never before has there been such a rush of people, ideas, food, music, art, innovation, industry, employment and enterprise in our city. Never before have there been so many possibilities.

Now is {your} time. **Be part of it.**

Visit www.studyp Perth.com.au



www.ecu.edu.au
CRICOS CODE 00279B



www.murdoch.edu.au
CRICOS CODE 001251



www.efi.wa.edu.au
CRICOS CODE 00020G/01723A



**THE UNIVERSITY OF
WESTERN AUSTRALIA**
Achieve. International Excellence.

www.uwa.edu.au
CRICOS CODE 00126G



Study in Australia at Griffith University

- ▶ **We're ranked in the top 5% worldwide**
Academic Ranking of World Universities (ARWU), 2013.
- ▶ **We're Australia's fastest growing university precinct**
\$320 million facilities up grade across our 5 campuses.
- ▶ **We offer a practical approach to teaching**
Work integrated learning internships and Industry Mentoring Programs.
- ▶ **We have support services to help you succeed**
International Student Advisors, Griffith Mates (student mentors) and Student Success Advisors.
- ▶ **Post-Study Work visa opportunities in Australia**
Recent eligible graduates can apply to the Department of Immigration and Border Protection (DIBP) to spend 2-4 years in Australia following your studies immigration.gov.au



For more information contact



BCIE Lagos Visa Counselling Branch
2nd Floor Synergy Pl., 16 Billings Way
Oregon Industrial Area, Ikeja, Lagos

Mobile: 013427675

Email: studyabroad_lagos@bcie.co.uk



Queensland, Australia

in association with





2013 Men's Division II
Soccer National Champions

SNHU – An Affordable US Education

We welcome students from around the world—more than 700 students from over 70 countries. Located one hour from Boston, SNHU is a great place to learn and live.

Affordability—Pay less for more!

Graduate/Postgraduate degrees

- Our intensive year-round schedule allows most Master's degrees to be completed in as little as 12-15 months realizing significant cost savings in living expenses. Spend US\$30-40000 compared to average of \$60-80000.
- Terms begin September, January, March, and June.

Bachelor's Degrees – save time and money with our innovative programs

- Degree in Three- the only approved 3 year/6 semester Bachelor's degree in the USA. SAVE 25%
- 3+1 Bachelor's degrees in Business Administration or Liberal Arts Get an SNHU degree in a one year top up program. SAVE 75%
- 2+2 Bachelor's degrees in Environmental Management or Law and Politics SAVE 50%
- More than 80 Bachelor's and Master's degrees in Business, Education and Arts & Sciences.

A University Recognized for Excellence

Southern New Hampshire University has been recognized for achievements both in and outside the classroom. In 2012, we were named by Fast Company as number 12 of the World's 50 Most Innovative Companies, and in 2013, President Obama mentioned SNHU in a national speech on education.

Our Graduates Go Places

Employers who have hired SNHU students and/or graduates:

- | | | |
|-----------------------------|-----------------------|---------------------|
| • AT&T | • ESPN | • Coca-Cola |
| • Ernst & Young | • General Motors | • Hewlett-Packard |
| • IBM | • MasterCard | • PepsiCo |
| • Reebok International Ltd. | • Ritz-Carlton Hotels | • Walt Disney World |

Southern
New Hampshire
University

snhu.edu
on campus. on location. online.

Office of International Admission

2500 North River Road | Manchester NH 03106-1045
T: 603.645.9629 | F: 603.645.9603
Email: international@snhu.edu | www.snhu.edu/international



Nursing

About International Nursing Studies at Anglia Ruskin University, UK

Nursing is a fast-paced, dynamic and complex vocation that varies around the globe. The training, available facilities and best-practices for nurses can be different in every country, as are the healthcare issues, diseases and illness nurses respond to in their patients. However, the underlying foundation and drive for nurses, to provide the best care possible for their patients, is universal.

By studying at Anglia Ruskin University you can be confident you will be taught by a team of dedicated and professional lecturers with international experience and all of our academic nursing staff have up to date knowledge within their fields of expertise. In fact, many of our nursing academics continue to work as registered nurses in hospitals in the region, so you can be sure you are being taught by those actively practicing the knowledge they are passing on.

The Faculty of Health, Social Care & Education at Anglia Ruskin University is the largest provider of health, social care and education courses in the east of England with over 10,000 students. Our international nursing students will be based at our Chelmsford campus, which is only 30 minutes outside London and one of the safest places to live in the UK.

The Chelmsford campus is also home to our state of the art nurse training facilities. Our specialist study facilities include over 11,000 square feet of clinical skills facilities designed in collaboration with the UK National Health Service (NHS), including simulated hospital wards and operating theatres.

The Overseas Nursing Programme (ONP)

The ONP is for nurses who have been trained outside of the UK. It is the qualification recognised by the UK Nursing and Midwifery Council (NMC) that allows you to register and work as a nurse in the UK.

The ONP can be studied as a module as part of either the BSc (Hons) or MSc International Nursing Studies and involves a practice placement in a UK hospital. It doesn't make the course any longer, but does add an additional £1,000 to your tuition fees.

When you successfully complete the course, you will be able to register with the NMC and apply for a job as a nurse in the UK.

Enhance your skills

Our International Nursing Studies courses have been specifically designed for qualified nurses educated outside of the UK and build on your previous experiences, knowledge and skills as a nurse. You will develop a sound theoretical framework and the confidence to transfer your existing knowledge and skills into any environment and explore your knowledge in a global environment.

You will focus on the critical understanding of the knowledge required to underpin and change international nursing practice and through exploring theoretical understanding you will become increasingly effective in caring for patients from different backgrounds with complex needs. You will develop the ability to recognise and respond flexibly to changing healthcare needs and meet the challenges of facing nursing across the world.

Career Prospects

We work hard to make sure our courses are relevant to the career you want. We are proud that over 93% of our students are in employment or further studies within 6 months of completing their course, one of the highest in our region, showing the value of your qualification when you graduate.

Those who successfully complete the ONP will be able to apply for nurse registration in the UK and apply for nursing jobs in UK hospitals. One of our most recent graduates from the ONP secured a job in the hospital where she undertook placement, they were so impressed with her work.

Nurses wishing to return home do so with the confidence that they have a high quality qualification that will assist them in progressing in their career, and also in improving their own and others practice in caring for their patients. This might include taking more senior nursing roles or taking on broader leadership responsibilities in healthcare.

Entry Requirements

BSc (Honours) International Nursing Studies

Two year programme:

- IELTS 6.0 or equivalent
- Current and valid nurse registration
- Qualification in Nursing (degree or diploma) equivalent to the first year of UK Undergraduate degree

One year programme:

- IELTS 6.0 or equivalent
- Current and valid nurse registration
- Qualification in Nursing (degree or diploma) equivalent to the first two years of UK Undergraduate degree
- Or alternatively, a qualification in Nursing (degree or diploma) equivalent to the first year of UK Undergraduate degree and successful completion of our Accreditation of Prior Learning assessment

Accreditation of Prior Learning: Your Gateway to Anglia Ruskin University

As a talented individual with a wealth of previous working and life experiences, we invite you to take part in our Accreditation of Prior Learning.

This service is completely free of charge for international students. Completing this process successfully will enable you to enter our courses at an advanced level, saving you both time in the UK and a year's fees and living expenses.

The process involves completing a single piece of assessed written work for submission. You will be supported throughout, receiving a bespoke service including tailored advice and personal support from one of our leading senior academic lecturers who is an expert in their field.

The process is simple, and an ideal opportunity to get a first-hand experience and introduction to our University and your lecturers, preparing you for success before you even begin your course!

MSc International Nursing Studies

- IELTS 6.5 or equivalent
- Current and valid nursing registration
- Qualification in Nursing equivalent to a UK degree
- 1 years post-registration experience in a nursing role

The Overseas Nursing Programme (ONP), with either BSc (Hons) or MSc International Nursing Studies

- A Decision Letter from the UK Nursing and Midwifery Council (NMC). You apply for this online directly from the UK NMC website under the 'Joining the register' section
- IELTS 7.0 in all elements
- Current and valid nursing registration
- Relevant qualification in Nursing
- 1 years post-registration experience in a nursing role

* The ONP is a professional qualification and the entry requirements are set by the UK Nursing and Midwifery Council (NMC), not by Anglia Ruskin University, and therefore may be subject to change.

For more information please contact our in country representatives on:

Anglia Ruskin University Representative Lagos:

Tel: 013427606
Mob: 07060930349
Email: aru_nigeria@bcie.co.uk

Anglia Ruskin University Representative Abuja:

Tel: 08063518929
Mob: 08063525899
Email: aru_abuja@bcie.co.uk

A selection of Nursing courses within BCIE's network

University	Course Title	Level	Country	Duration
University of Aberdeen	Nursing MSc	PG	UK	1 Year
Anglia Ruskin University	International Nursing Studies BSc (Hons)	UG	UK	2 Years
Anglia Ruskin University	International Nursing Studies MSc	PG	UK	1 Year
Bangor University	Nursing Degree (BN)	UG	UK	3 Years
Bournemouth University	Nursing BSc	UG	UK	3 Years
University of Bradford	International Nursing Studies MSc	PG	UK	1 Year
University of Chester	MSc Professional Nursing	UG	UK	1 Year
Coventry University	Nursing Studies MSc	PG	UK	1 Year
University of Glasgow	BA Nursing	UG	UK	4 Years
Glasgow Caledonian University	BA (Hons) Nursing Studies	UG	UK	4 Years
Glasgow Caledonian University	Advanced Nursing MSc	PG	UK	1 Year
University of Hull	Nursing (Child or Adult) BSc (Hons)	UG	UK	3 Years
Leeds Metropolitan University	International Nursing MSc	PG	UK	1 Year
University of Liverpool	Nursing BN (Hons)	UG	UK	3 Years
Northumbria University	Nursing Science BSc (Hons)	UG	UK	1 Year
Northumbria University	MSc Nursing / Nursing Leadership	PG	UK	1 Year
Oxford Brookes University	Nursing BSc (Hons)	UG	UK	3 Years
University of Sunderland	Nursing MSc	PG	UK	1 Year
University of the West of Scotland	Nursing MSc	PG	UK	2 Years
University of Worcester	Nursing Studies (for overseas nurses) MSc	PG	UK	18 Months
Central Queensland University (00219C)	Bachelor of Nursing	UG	AUSTRALIA	3 Years
Deakin University (00113B)	Bachelor of Nursing	UG	AUSTRALIA	3 Years
Deakin University (00113B)	Master of Nursing Practice	PG	AUSTRALIA	18 Months
Edith Cowan University (00279B)	Master of Nursing	PG	AUSTRALIA	18 Months
Flinders University (00114M)	Master of Nursing	PG	AUSTRALIA	18 Months
Griffith University (00233E)	Master of Nursing	PG	AUSTRALIA	1 Year
La Trobe University (00115M)	Bachelor of Nursing	UG	AUSTRALIA	3 Years
Centennial College	Nursing (BScN)	UG	CANADA	4 Years
University of New Brunswick	Bachelor of Nursing (BN)	UG	CANADA	4 Years

Information on this table is correct at time of printing and is correct to the best of our knowledge (2014)

Clark Gbenere Patience

Nigeria

Anglia Ruskin University

BCIE's approach to students is very encouraging and I am very happy to be with them. My sister also passed through BCIE, it was a very critical time for her with the proper guidance and counselling from BCIE staff, she was able to secure her admission, her scholarship and her VISA!

Foluke Bosun-Anije

Nigeria

Anglia Ruskin University

It was a wonderful experience with BCIE VI Team. They helped me at every stage of the application process.



SECURE YOUR FUTURE

Anglia Ruskin University is a modern UK university with a history, offering prestigious undergraduate and postgraduate degrees.

- Excellent locations
- State-of-the-art facilities
- Over 150 high quality courses
- Award-winning student support
- Over 120 nationalities

What courses do we offer?

Accounting & Finance	International Relations
Architecture	Law
Biomedical Science	MBA
Business	Media Studies
Business Economics	Optometry
Computing	Psychology
Engineering	Public Health
Forensic Science	Sports Science
International Nursing Studies	Tourism Management

For details, please contact:

Mr Chamberlain Okolue (0706 093 0349)
or Ms Amaoge Mercy Omenye (0806 351 8929)

Email: aru_nigeria@bcie.co.uk
or aru_abuja@bcie.co.uk



Anglia Ruskin University

Cambridge Chelmsford Peterborough

www.anglia.ac.uk

Masters in Public Health at the University of York

Financial volatility, food insecurities and climate change mean that more than ever before, public health is a global issue. Public health concerns include social inequality, economic and environmental changes, political challenges, and issues of human rights. The Masters in Public Health (MPH) at York offers the chance for students to get a solid grounding in the subject through training in public health history and practice, epidemiology and research methods. The MPH is run in association with the Hull York Medical School (HYMS) and is a member of the Association of Schools of Public Health in the European Region (ASPHER).



Faith Alfa (pictured left), a student from Nigeria, describes her experiences of the course, “The Masters in Public Health is interdisciplinary – it enables you to interact with people from different professions and backgrounds including doctors, pharmacists and nurses. It’s always interesting to be able to approach a solution to a problem from many different angles, backgrounds and countries.”

Whilst studying on the course, Faith was encouraged to ensure that she got maximum benefit from her studies. She writes, “I like the way the lectures are structured. We have an hour of lecture then a break and then we convene for an interactive session and workshop. During the lectures we are taught what we need to know, then we come back and put into practice what we’ve learnt.”

Another successful student, Ganesh Veerasekar from India writes, “I chose this programme specifically because, as a medical graduate, I thought this programme would open up more opportunities for me, both to increase my

knowledge in the field of research and to strengthen my skills in public health administration.” Ganesh is now working as a Clinical Epidemiologist in India. His work has directly benefitted from the course at York, as he puts it, “I benefited a lot from this programme. The course is short, very straight forward and catered to all needs. I gained knowledge in a systematic way, and I have gained enough insight into what I really need to know.”

Students at the University of York are attracted here not only by the excellent reputation of the University but also the delightful surroundings of the city itself. The University of York is ranked first in the UK and seventh in the world in the Times Higher Education world rankings of universities less than 50 years old. As Ganesh writes, “the University of York has a good reputation in terms of students’ satisfaction and ranking. York is also one of the oldest cities in the UK, it is a traditional, beautiful and romantic city and is one of the best places to live in England.”

For further information please contact your nearest BCIE Office.



A selection of Postgraduate Public Health courses within BCIE’s network

University	Course Title	Country	Duration
Anglia Ruskin University	MSc Public Health	UK	1 Year
Bangor University	MSc Public Health and Health Promotions	UK	1 Year
Bournemouth University	MSc Public Health	UK	1 Year
University of Brighton	MSc Public Health	UK	1 Year
Cardiff Metropolitan University	MSc Applied Public Health	UK	1 Year
Cardiff University	MPh Public Health	UK	1 Year
University of Chester	MPh Public Health	UK	1 Year
City University London	MPh Public Health	UK	1 Year
University of Dundee	MPh Public Health	UK	1 Year
University of Glasgow	MPh Public Health	UK	1 Year
Glasgow Caledonian University	MSc Public Health	UK	1 Year
University of Hertfordshire	MPh Public Health (Online)	UK	2–5 Years
University of Hull	MSc Health Studies	UK	1 Year
Leeds Metropolitan University	MSc Public Health and Health Promotions	UK	1 Year
University of Liverpool	MPh Public Health	UK	1 Year
London Metropolitan University	International Public Health Nutrition MSc	UK	1 Year
Newcastle University	MSc Public Health and Health Services	UK	1 Year
University of Salford	MSc Public Health	UK	1 Year
Sheffield Hallam University	MA Public Health	UK	1 Year
University of Sunderland	MSc Public Health	UK	1 Year
University of Worcester	Public Health MSc	UK	1 Year
University of York	MPh Public Health	UK	1 Year
Bond University (00017B)	Master of Public Health Nutrition	AUSTRALIA	2 Years
Deakin University (00113B)	Master of Public Health	AUSTRALIA	18 Months
Edith Cowan University (00279B)	Master of Public Health	AUSTRALIA	2 Years
Flinders University (00114M)	Master of Public Health	AUSTRALIA	18 Months
La Trobe University (00115M)	Master of Public Health	AUSTRALIA	2 Years
Centennial College	Workplace Wellness	CANADA	1 Year

Information on this table is correct at time of printing and is correct to the best of our knowledge (2014)



- Ranked 100th in the world (Times Higher Education World University Rankings for 2013-2014).
- Top 10 academic departments: Computer Science, Electronics, Biology, Chemistry, English.
- Postgraduate internship opportunities available for Computer Science and Electronics graduates.
- Conveniently located to the centre of York - 2 hours by train from London.



“The University of York is a Russell Group University so I was confident that the quality of the course, teaching and research on offer would be excellent. When I came to visit York with friends, it felt really comfortable and my interaction with the friendly locals helped as well. York is a very friendly city, making it easy to make friends who become a second family to you.”

*Babatunde
1st year Medical Student
Hull York Medical School*

www.york.ac.uk/international

E: international@york.ac.uk T: +44 (0)1904 323534

[f](#) UniversityOfYorkInternationalTeam [t](#) @York1963

Study in the UK with a scholarship of up to £2500



GCU offers scholarships of up to £2500 for self-funded international students. High-quality programmes and award-winning support make us a top choice for students from over 100 countries.

At GCU you will find:

- A wide range of subjects including Applied Instrumentation & Control, Banking & Finance, Business, Computing, Engineering, Energy & Environmental Management and Public Health
- Located in the heart of the vibrant city of Glasgow, host city for the Commonwealth Games 2014
- A selection of postgraduate programmes are available at our London campus www.gculondon.ac.uk
- Rated 2nd in the UK for international student satisfaction (ISB, Summer 2013)
- January and September start dates available



Brighter futures begin with GCU



www.gcu.ac.uk

Connecting you to your future

- Study an internationally respected degree in world-class facilities
- Study in a student-friendly UK town
- Fast and efficient application decisions
- Use your WAEC English result instead of IELTS for most courses

Undergraduate and postgraduate courses across a variety of subject areas, including:

- Business, Management & Law
- Engineering
- Communication & Journalism
- Computing
- Computer Animation
- Marketing, Advertising & PR
- Television, Film & Radio Production
- Tourism & Hospitality

Scholarships

BU offers generous scholarships every year to our international students, with scholarship values ranging from £2,000 to £20,000 per year.

To find out more, register your interest or make a FREE application please contact us at:

bournemouth_nigeria@bcie.co.uk

www.bournemouth.ac.uk/connect-africa



STUDY IN THE ENERGY CAPITAL OF EUROPE

WWW.ABDN.AC.UK

The University of Aberdeen is a charity registered in Scotland No.SCO13683.

Founded in 1495, and today ranked in the top 1% of the world's universities, the University of Aberdeen boasts a distinguished global reputation for excellence in research and teaching. Over the years, five Nobel Prizes have been awarded for work carried out or begun at Aberdeen, and currently 90% of our research activity is of 'international quality'.

93% of our graduates enter directly into work, further study or training within six months of graduating. Our attraction also lies in our world-class facilities, and the care and support that we provide to all our students. These combined strengths attract an ever-growing, diverse international student community that is drawn from 120 different countries.

The University offers a broad range of programmes at Foundation, Undergraduate, and Postgraduate level. For more information about our programmes, scholarships, facilities, and campus accommodation please contact us at sras@abdn.ac.uk or call: +44 (0)1224 272090.

The University of Aberdeen was voted 'Education Provider of the Year 2013' by the African Forum Scotland.





Study in the UK at Coventry University

Preparing you for a future career



Quality teaching, employable graduates, strong links with industry and an innovative and dynamic approach to learning – are just a few highlights of studying with Coventry University. We have over 5,000 international students from more than 130 countries who are a part of our diverse and vibrant university.

Coventry University Course areas include:

- Accountancy
- Advertising
- Art
- Automotive Design
- Building and Construction
- Business
- Civil Engineering
- Computing
- Disaster Management
- Engineering
- Enterprise and Entrepreneurship
- Finance
- International Relations
- Law
- Logistics
- Management
- Marketing
- Tourism



Coventry University London Campus

Our London Campus offers you a range of undergraduate and postgraduate programmes, all delivered in the heart of one of the world's largest financial and business centres. Our expertise and in-depth understanding of what today's employers are looking for, means that we can offer you a real business experience.

Course areas include:

- Global Financial Trading
- Global Marketing
- International Fashion Management
- International Hospitality and Tourism Management
- International Human Resources Management
- Law
- Oil and Gas Management



Introducing...

A world of opportunity



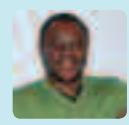
Coventry has a long tradition as a provider of education with strong links with industry. With a 94% graduate employment rate, it is our career based courses and commitment to the employability of our students that sets us apart from other universities.

"As an international student, I've learnt a lot on my degree programme that helps me socially as well as academically. The city feels really safe and the campus is well located with good transport links. The standard at the University is high and I would love to do my masters after gaining some industry experience"



Mariyam Zakaria
BA (Hons) Fashion

"I am constantly impressed by the support I receive not only from my faculty but throughout the University. Their interest in students is evident, and I know they want me to succeed."



Mustbe C Hart
MSc Management of Information Technology



For a full list of undergraduate and postgraduate programmes visit: www.coventry.ac.uk/international

Code: 11372-13



[Facebook.com/coventryuniversityinternational](https://www.facebook.com/coventryuniversityinternational)

[Twitter.com/covintstudents](https://twitter.com/covintstudents)

www.coventry.ac.uk/international

STUDY AT A TOP UNIVERSITY

Kent is one of the UK's leading universities.

In the Top 10 for student satisfaction, and ranked in the Top 20 by the *Guardian University Guide*, we offer you a unique experience.

- World-leading research
- Excellent graduate prospects
- Superb student experience
- Stunning campuses close to London and Europe
- Vibrant and safe environments for your studies
- £15m scholarship fund

Find out more at www.kent.ac.uk/internationalstudent





Kingston University
London

Study in the UK at Kingston University

Why choose Kingston University?

- Innovative, cutting-edge courses that include strong links with industry, work placement opportunities and career skills
- Real diversity - with students from 151 countries
- Just 25 minutes by train from central London

Undergraduate and postgraduate courses

- Business, Management and Law
- Human Resource Management and Accounting and Finance
- Pharmaceutical and Biological Sciences
- Aerospace, Automotive and Mechanical Engineering
- Civil Engineering and Construction Management
- Computing, Information Systems and Software Engineering
- International Relations, Economics, Film and Journalism

www.kingston.ac.uk/international

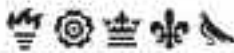
Scholarships

Kingston University offers over 60 scholarships every year to international students. Each scholarship is worth £3,500 per year of study and they are available to both undergraduate and postgraduate students. The University awards scholarships based on academic merit, financial need and what you intend to do after completing your course.

For more information about all of our scholarships, visit:
www.kingston.ac.uk/internationalscholarshipsandbursaries

For more information, contact:

T: + 44 (0)20 8417 3411
E: international@kingston.ac.uk
www.kingston.ac.uk/International



UNIVERSITY OF Hull

Established in 1928, the University of Hull has a distinguished history of providing quality education and rich life experience to students from around the globe. With over 19,000 students and 2000 international students from over 100 countries, the University prides itself on offering a traditional education in a modern and challenging, learning environment.

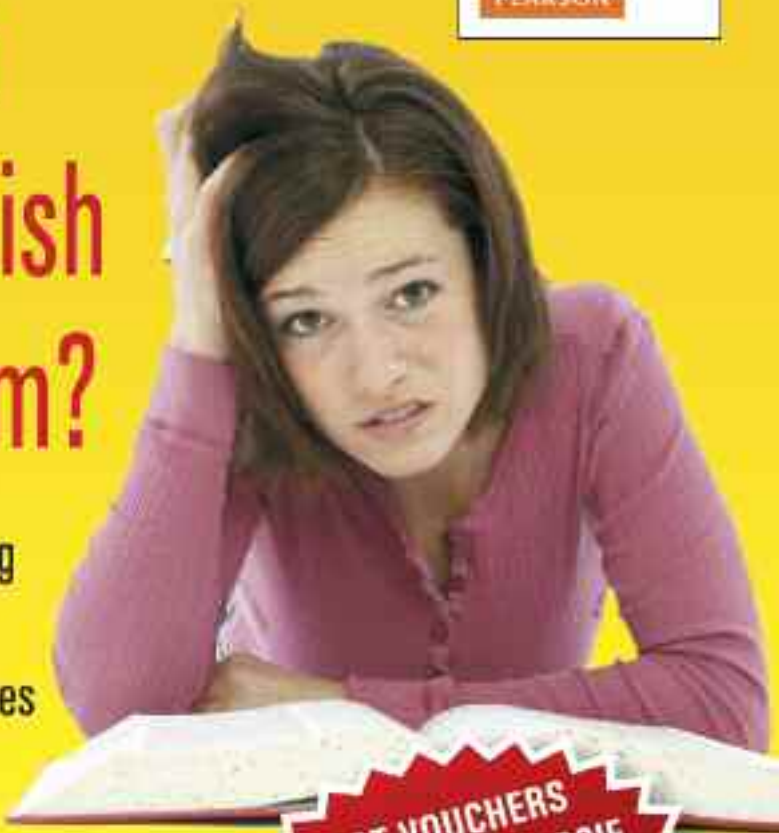
Hull has maintained its position among the leading mainstream English universities in each of the last six National Student Surveys, which measure student satisfaction – most recently, 90% of our students expressed satisfaction with their experience.

www.hull.ac.uk/international





Worried about taking an English Language Exam?



Improve your chances of passing with our New PTE Academic Official Test and Training Centres in Abuja and Port-Harcourt.

BCIE Ltd in conjunction with PTE Academic is now offering a Preparation course to all Nigerian students in our Abuja, Port-Harcourt and Lagos offices:

- Helps improve your chances of passing the exam First Time
- Run by PTE Academic trained teachers
- 8 hour PTE Academic preparation making it cost effective and efficient
- In Abuja and Port-Harcourt the training will be run in the actual PTE Academic Exam site helping familiarise you with the testing environment
- FREE BCIE Ltd services will be offered to all PTE Academic test candidates saving you ₦55,000!
- Discounted Official PTE Academic Guides sold at our offices too
- Discounted Test Vouchers sold at our offices making it more convenient to register for the test

TEST VOUCHERS also sold through BCIE saving you the need to book online using a credit card.

For the next training dates talk to your PTE Academic Centre in Abuja (*Delphine* - 09-461-1728), Port-Harcourt (0708-501-0020) and Lagos (*Ifeoma* - 0806-867-7484)



British Canadian International Education Ltd



Contact our offices nationwide:

BCIE LTD – ABUJA OFFICE:

24B Djibouti Crescent, off Freetown Street, Behind Rockview Hotel, the 5th House after Zartech, Wuse 2. Email: pte@bcie.co.uk

BCIE LTD – PORT HARCOURT OFFICE:

80 Aba Road, Opposite Govt Crafts Development Centre. Email: pte_ph@bcie.co.uk

VICTORIA ISLAND OFFICE: Plot 14, Muri Okunola Street, Off Ajose Adeogun Street, Victoria Island Annex, Lagos. Email: nigeriakoyi@bcie.co.uk

IKEJA BRANCH: Valley View Plaza, 99 Opeti Road. Email: nigeriali Ikeja@bcie.co.uk

VCB IKEJA BRANCH: 2nd Floor Synergy Place (Same Building as UK Visa Application Centre, VF5), 16 Billings Way, Ikeja. Email: nigeriavcb@bcie.co.uk

KANO OFFICE: 89 Lamido Road. E-mail: kano@bcie.co.uk

www.bcie.co.uk

Find us on **facebook**: BCIE

Follow us on **twitter**: @BCIEUK



Royal Holloway, University of London

Welcome to the UK's most international university



- Ranked No 1 in the UK for international outlook, in recognition of the global impact of our research and the diversity of our staff and students
- One of the UK's leading research-intensive universities, with 19 academic departments spanning the arts, sciences and social sciences
- Graduates benefit from the global reputation of a University of London degree
- A unique best of both worlds location: a safe, beautiful campus in Surrey less than 20 miles from central London



Find out more at www.rhul.ac.uk/international



What our students say about BCIE

Edgar Moses

KENYA
INTERNATIONAL COLLEGE OF MANITOBA



I really enjoyed the services that BCIE gave me in my quest to pursue an internationally recognized degree. With all the confusion that arises while trying to choose a school coupled with my inadequate knowledge of visa application, BCIE helped me find an institution, guided me through the visa process and I eventually made it to Canada in well recognised university. To anyone who has dreams to study in the UK and Canada, I strongly suggest that you let BCIE be your first stop... they will answer all your questions and give you meaningful advise that you will forever appreciate. Leah and Beverly in Kenya are kind and loving ladies. I miss them... But too bad it's them who helped me get to Canada! :)

Ahmad Naveed Malik

PAKISTAN
DE MONTFORT UNIVERSITY



It was truly a wonderful experience which I had with BCIE. I personally believe without their guidance and support the road of filling the visa case and choosing an appropriate university which suits my career would not had been easy. Services of BCIE are worth appreciable and excellent in all means. Staff is very kind humble and cooperative to every individual who tends to seek career counseling and guidance. They help out of the way to every student until he/she gets satisfied by their services. I feel greatly indebted to Mam Naz for her continuous cooperation guidance and services given to me for my career counseling and completing my Visa Process.

Muhammad Abbas Arif

PAKISTAN
BOURNEMOUTH UNIVERSITY



It is a long and tiresome process of getting admission in any foreign university. When I finally decided to apply for an MSc degree I did not know the first place to start. With BCIE team, I was able to find the right course and University of my liking, go through the application process and finally apply for VISA process as smoothly as possible. BCIE's team members are real professionals, as they will timely guide you to achieve your aim. For me, BCIE team has been a great support and my admission in UK for MSc would not have been possible without their tedious efforts. Anyone willing to go for higher education, BCIE is the place to start!

Kafilah Omotosola

NIGERIA
UNIVERSITY OF WORCESTER

My stay at the University of Worcester was a splendid experience. It brought out the best in me and I had never known the potential I possessed until I got here. Today, I can confidently critique any research paper and I can make a logical argument through critical thinking and reflection. My leadership skills have also improved greatly. All thanks to BCIE for helping me out with my applications.

Bright Foli

GHANA
UNIVERSITY OF ABERDEEN

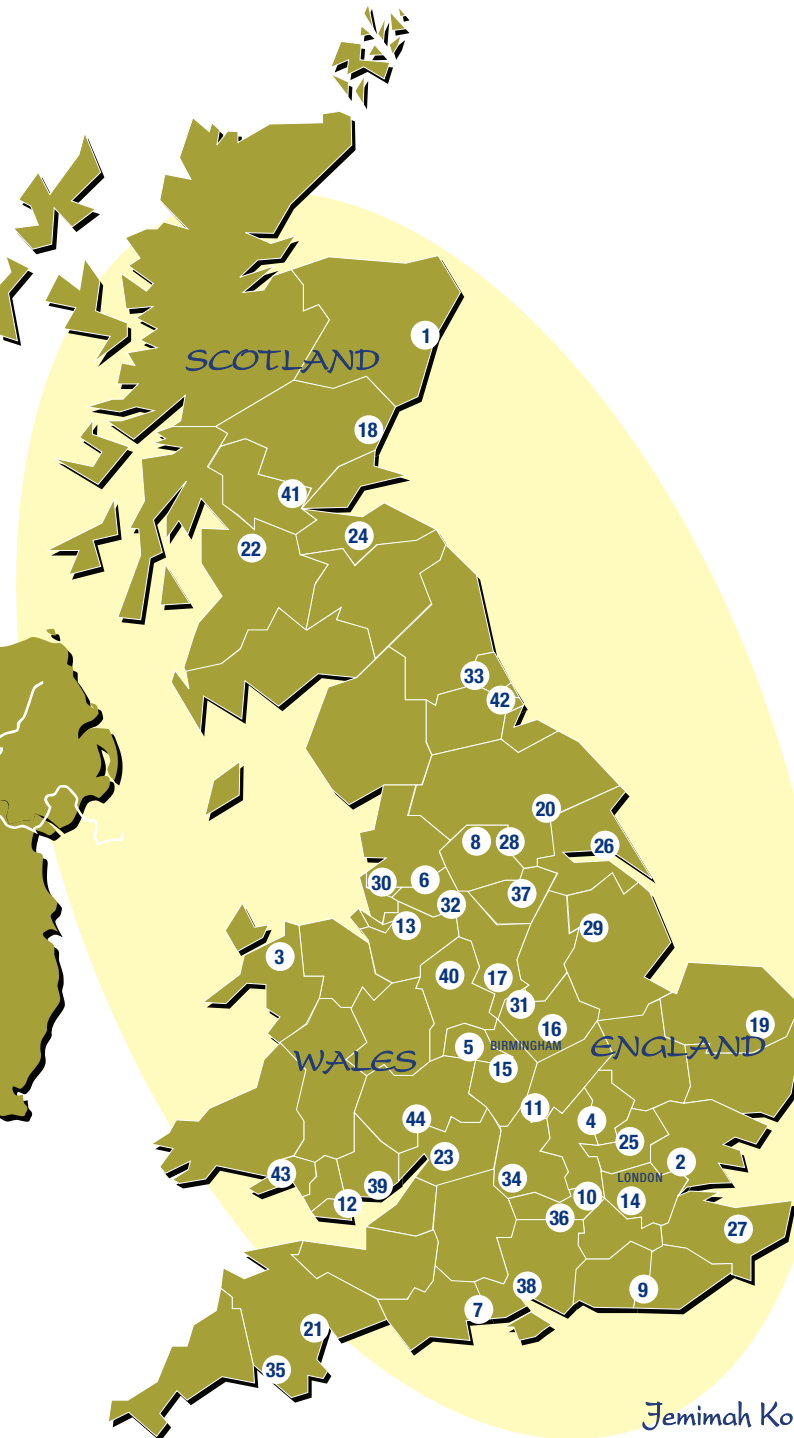
The staff of BCIE Ghana provided a perfect guidance towards preparing my document for application to gain admission. I compiled the entire necessary document and presented it at the office in Accra and after some few minutes my application for admission was processed. I was then called by a staff of BCIE that I have successfully secured admission at the University of Aberdeen. BCIE worked assiduously to ensure the early release of my CAS and even went further to help with my visa application process. BCIE gave me expert advice on how to apply for the Tier 4 visa to make sure that the UK Border Agency does not deny me the visa. To my surprise, they also directed me on how to secure accommodation at the school and also gave me a pre-departure guide after my visa was issued. I couldn't even believe the more when BCIE told me they don't charge a penny for all the services they render. I mean, I paid "NOTHING" for all the services rendered to me. It was "FREE OF CHARGE". I highly recommend BCIE to anyone who has intentions of studying in the UK, Australia, Canada, Dubai or USA. The staffs of BCIE are friendly, hardworking, dedicated and you will never regret going to BCIE.

Anum Jalil

PAKISTAN
UNIVERSITY OF SALFORD

Being a student of BCIE I feel proud and I always get good and right advice towards my future. BCIE team is very helpful and very co-operative. I recommend any students to come here and discuss their plan and their goals

Which UK University?



TIMES RANKING	UNIVERSITY	CITY	LOCATION ON MAP	DURATION OF TRAVEL FROM LONDON (EST. BUS)	DURATION OF TRAVEL FROM LONDON (EST. RAIL)
	University of Aberdeen	Aberdeen	1	11 hrs 55 mins	7 hrs 13 mins
	Anglia Ruskin University	Chelmsford	2	1 hrs 40 mins	0 hrs 58 mins
	Bangor University	Bangor	3	8 hrs 55 mins	3 hrs 45 mins
	University of Bedfordshire	Luton	4	1 hrs 20 mins	0 hrs 51 mins
	Birmingham City University	Birmingham	5	2 hrs 55 mins	1 hr 44 mins
	University of Bolton	Bolton	6	5 hrs 15 mins	3 hrs 50 mins
	Bournemouth University	Bournemouth	7	2 hrs 25 mins	2 hrs 33 mins
	University of Bradford	Bradford	8	4 hrs 30 mins	2hrs 53 mins
	University of Brighton	Brighton	9	1 hrs 55 mins	1 hr 27 mins
	Brunel University	Uxbridge	10	0 hrs 40 mins	0 hrs 49 mins
	University of Buckingham	Buckingham	11	3 hrs 07 mins	0 hrs 52 mins
	Cardiff Metropolitan University	Cardiff	12	2 hrs 50 mins	2 hrs 37 mins
	Cardiff University	Cardiff	12	2 hrs 50 mins	2 hrs 37 mins
	University of Chester	Chester	13	4 hrs 55 mins	2 hrs 23 mins
	City University London	London	14	N/A	N/A
	Coventry University	Coventry	15	2 hrs 10 mins	1 hr 19 mins
	De Montfort University	Leicester	16	2 hrs 15 mins	1 hr 18 mins
	University of Derby	Derby	17	3 hrs 05 mins	1 hr 41 mins
	University of Dundee	Dundee	18	10 hrs 30 mins	5 hrs 53 mins
* Top 30 *	University of East Anglia	Norwich	19	3 hrs 15 mins	2 hrs 14 mins
	University of East London	London	14	N/A	N/A
* Top 30 *	University of Exeter	Exeter	21	4 hrs 05 mins	3 hrs 56 mins
* Top 30 *	University of Glasgow	Glasgow	22	8 hrs 15 mins	5 hrs 05 mins
	Glasgow Caledonian University	Glasgow	22	8 hrs 15 mins	5 hrs 05 mins
	University of Gloucestershire	Cheltenham	23	3 hrs 10 mins	2 hrs 55 mins
	University of Greenwich	London	14	N/A	N/A
	Heriot-Watt University	Edinburgh	24	8 hrs 55 mins	4 hrs 23 mins
	University of Hertfordshire	Hatfield	25	0 hrs 52 mins	0 hrs 22 mins
	University of Hull	Hull	26	5 hrs 45 mins	2 hrs 34 mins
	University of Kent	Canterbury	27	1 hrs 45 mins	1 hr 12 mins
	Kingston University	London	14	N/A	N/A
* Top 30 *	University of Leeds	Leeds	28	4 hrs mins	2 hrs 13 mins
	Leeds Metropolitan University	Leeds	28	4 hrs mins	2 hrs 13 mins
* Top 30 *	University of Leicester	Leicester	16	2 hrs 15 mins	1 hr 18 mins
	University of Lincoln	Lincoln	29	5 hrs 10 mins	2 hrs 25 mins
	University of Liverpool	Liverpool	30	4 hrs 40 mins	2 hrs 48 mins
	Liverpool John Moores University	Liverpool	30	4 hrs 40 mins	2 hrs 48 mins
	London Metropolitan University	London	14	N/A	N/A
	London South Bank University	London	14	N/A	N/A
* Top 30 *	Loughborough University	Loughborough	31	2 hrs 45 mins	1 hr 29 mins
	Manchester Metropolitan University	Manchester	32	4 hrs 35 mins	3 hrs 26 mins
* Top 30 *	Newcastle University	Newcastle	33	6 hrs 25 mins	3 hrs 12 mins
	Northumbria University	Newcastle	33	6 hrs 25 mins	3 hrs 12 mins
	Oxford Brookes University	Oxford	34	1 hrs 50 mins	1 hr 27 mins
	University of Plymouth	Plymouth	35	5 hrs 05 mins	4 hrs 52 mins
	University of Reading	Reading	36	1 hrs 51 mins	0 hrs 55 mins
	Robert Gordon University	Aberdeen	1	11 hrs 55 mins	7 hrs 13 mins
* Top 30 *	Royal Holloway – University of London	London	14	N/A	N/A
	University of Salford	Salford	32	6 hrs 15 mins	3 hrs 19 mins
	Sheffield Hallam University	Sheffield	37	3 hrs 15 mins	2 hrs 17 mins
* Top 30 *	University of Southampton	Southampton	38	2 hrs 30 mins	1 hr 55 mins
	University of South Wales	Newport	39	2 hrs 50 mins	2 hrs 21 mins
	University of St Mark & St John	Plymouth	35	5 hrs 05 mins	4 hrs 52 mins
	Staffordshire University	Stafford	40	4 hrs 25 mins	1 hr 35 mins
	University of Stirling	Stirling	41	9 hrs 13 mins	5 hrs 25 mins
	University of Strathclyde	Glasgow	22	8 hrs 15 mins	5 hrs 05 mins
	University of Sunderland	Sunderland	42	7 hrs 05 mins	3 hrs 44 mins
	Swansea University	Swansea	43	4 hrs 15 mins	3 hrs 28 mins
	University of Ulster	Birmingham	5	2 hrs 55 mins	1 hr 44 mins
	University of West London	London	14	N/A	N/A
	University of the West of Scotland	Glasgow	22	8 hrs 15 mins	5 hrs 05 mins
	University of Worcester	Worcester	44	3 hrs 40 mins	2 hrs 51 mins
* Top 30 *	University of York	York	20	4 hrs 50 mins	2 hrs 04 mins
	York St John University	York	20	4 hrs 50 mins	2 hrs 04 mins

* University rankings as per *The Times* and *Sunday Times University Guide 2014*
 * Duration of travel estimated according to National Express/National Rail

Dr Ali Hussain
 PAKISTAN
 LEEDS METROPOLITAN UNIVERSITY

I got to know about BCIE consultant during my research on net for UK education. I got perfect information about scholarship procedure throughout from them. It makes a lot of difference when the counsellor is so much experienced. They provide realistic counselling depending upon our profile

Jemimah Kondegri
 GHANA
 SHEFFIELD HALLAM UNIVERSITY



I got to know about BCIE Ghana and the superb services they render through a trusted friend who had successfully been served by BCIE Ghana to find a school in the UK and apply for Tier 4 visa for his studies in the UK. The expert coaching and guidance I received from BCIE Ghana made my visa application process stress-free and easy and saved me the pain of being refused a visa to study in the UK because of ignorance of Tier 4 Visa application rules. I recommend that students who aspire to know all there is to know about BCIE, making a successful application for admission to UK schools, Tier 4 visas updates and application process and many other helpful information to talk to BCIE Ghana. They will gladly serve you and you will be glad you did.

BCIE's University Network Comments...



SHARPENS YOUR THINKING

Ms Gerardine Togher
Senior International
Development Officer
**Sheffield Hallam
University**



Sheffield Hallam University has been working with BCIE in Ghana since 2009. Their office provides our students with a friendly and professional environment to source reliable information and guidance. BCIE Ghana provides us with a growing number of quality students who always speak highly of BCIE staff and having met the team I can see why! I am confident in the services BCIE provide for us and our students, long may it continue!

James Littlewood
International Officer
Bournemouth University



Bournemouth University has a longstanding relationship with BCIE and I have no hesitation in recommending their services to you. Having BCIE representation will make your experience of applying to Bournemouth University much easier. They will explain the courses available, our entry requirements and all other aspects of university life. They will also work closely with our International Admissions Office to ensure that your application is processed as quickly as possible and that other processes, such as visa applications, go smoothly.

Charles Magee
Birmingham City University



"My September intake from BCIE was successful. BCIE Nigeria and Ghana provide my university with quality students. I continue to work with BCIE Nigeria because you are the overall best agency in Nigeria."



Donal O'Connor
Director of Marketing and Recruitment
Navitas

"Navitas has enjoyed an excellent working relationship with BCIE for a number of years and the colleges in the UK in particular have benefited greatly from the professionalism of BCIE and the great knowledge and energy of BCIE staff in Africa and Pakistan."

Anthony Bradley
Regional Manager, International Marketing
Griffith University



"I am the Regional Manager for Africa at Griffith University and one of my responsibilities is to explore new markets for the university in that region. I decided to work with BCIE on account of very positive comments from my counterparts in UK universities. Australian universities do not traditionally visit Nigeria: we receive many travel warnings advising that we do not travel there. And so I was a little apprehensive before participating in BCIE's education mini-fair in September last year – I needn't have been! The fair was very professionally and smoothly run, and meticulous attention was paid to the security and comfort of the participating university representatives. Furthermore we received a considerable number of applications during the fair and have continued to receive applications ever since. I am very happy to endorse BCIE and look forward to participating in the BCIE Education Roadshow in Nigeria and Ghana this year."



Nusrat Bashir
International
Recruitment Manager
University of York



"We have been working with BCIE since 2011 and have found the team both in the UK, and overseas to be very professional and helpful. We look forward to working closely with BCIE to help raise the University's profile in Africa and attract the brightest students to York."

Dr. Ainsley McIntosh
International Officer
University of Aberdeen



"The University of Aberdeen has enjoyed a fruitful working relationship with BCIE since 2007, during which time BCIE has done a fantastic job of recruiting ever-stronger numbers of well qualified, bright students for a wide range of programmes in our portfolio. Thanks to both BCIE's UK and in-country teams, our visits are well organised, follow up is extremely efficient, and we enjoy excellent support both during our trips and on the ground. The many years' experience accrued by BCIE's staff members ensures that applicants are provided with strong support during the visa application process, which is of great value at this particularly stressful stage in the admission process. The in-country teams balance professionalism with friendliness and warmth, ensuring that our visits are not only productive but also a pleasure. I have absolute confidence in the quality and level of service that BCIE delivers, and look forward to working closely alongside our colleagues there for many years to come. Furthermore, I would have no hesitation in recommending prospective students and partner universities to engage the services of BCIE so that they too may benefit from the agency's years of excellence and experience in the field."



Jamie Hastings
Regional Manager
(Africa)
**Robert Gordon
University**



"BCIE has strategically located offices around West Africa and are a dominant force in the market of student recruitment. Robert Gordon University is pleased to be working as a partner to BCIE in the region and will continue to visit the regional offices and engage in exhibitions and other recruitment initiatives".

Melissa Gibson
International Officer
University of Kent



"BCIE and the University of Kent have been working together for almost 10 years – a testament to the support that BCIE are able to provide our prospective students throughout the university and visa application process. The offices in Ghana, Nigeria and Pakistan are welcoming, professional environments with reliable and knowledgeable staff, all of whom can demonstrate the far-reaching benefits of a UK education to potential students and their parents. It is because of this that we continue to work with BCIE and are happy to refer students to them for assistance."

Gillian Ajayi
Associate Director
Curtin University



"I have worked with BCIE for many years, with several universities. I have found them to be highly professional, and caring of both the students and institution representatives. I attended the November 2013 exhibition in Lagos and Abuja and it was very well attended with quality, pre assessed students and very well organised. The students were a delight."



Universities in BCIE Network:

UK Universities

University of Aberdeen
 Anglia Ruskin University
 Bangor University
 University of Bedfordshire
 Birmingham City University
 University of Bolton
 Bournemouth University
 University of Bradford
 University of Brighton
 Brunel University
 University of Buckingham
 Cardiff Metropolitan University (UWIC)
 Cardiff University
 University of Chester
 City University London
 Coventry University
 De Montfort University
 University of Derby
 University of Dundee
 University of East Anglia
 University of East London
 University of Exeter
 University of Glasgow
 Glasgow Caledonian University
 University of Gloucestershire
 University of Greenwich
 Heriot-Watt University
 University of Hertfordshire
 University of Hull
 The Institute of Education (Dublin)
 INTO Global Education Partners
 University of Kent
 Kingston University
 University of Leeds
 Leeds Metropolitan University
 University of Leicester
 University of Lincoln
 University of Liverpool
 Liverpool John Moores University
 London Metropolitan University
 London South Bank University
 Loughborough University
 Manchester Metropolitan University
 Navitas Global
 Newcastle University
 Northumbria University
 Oxford Brookes University
 University of Plymouth
 University of Reading
 Robert Gordon University
 Royal Holloway – University of London
 University of Salford
 Sheffield Hallam University
 University of South Wales
 University of Southampton
 University of St Mark & St John
 Staffordshire University
 University of Stirling
 University of Strathclyde
 Study Group
 University of Sunderland
 Swansea University
 University of Ulster
 University of West London
 University of the West of Scotland
 University of Worcester
 University of York
 York St John University

Canadian Universities

Bodwell High School
 Centennial College
 Fairleigh Dickinson University
 University of the Fraser Valley
 International College of Manitoba
 Lambton College
 University of New Brunswick
 University of Ontario Institute of Technology
 Royal Roads University
 Seneca College
 Thompson Rivers University
 Vancouver Island University

Australian Universities

Bond University (00017B)
 Central Queensland University (00219C)
 Curtin College (02042G)
 Curtin University (02637B)
 Deakin University (00113B)
 Edith Cowan University (00279B)
 Education & Training International (00020G, 01723A)
 Eynesbury Institute of Business and Technology (00561M)
 Flinders University (00114M)
 Griffith University (00233E)
 La Trobe University (00115M)
 Macquarie University (00002J)
 MIBT @ Deakin University (01590J)
 PIBT @ Edith Cowan University (01312J)
 QIBT @ Griffith University (01737F)
 West Australian Institute of Further Studies (03188C)

USA Universities

Colorado State University
 INTO Marshall University
 INTO Oregon State University
 INTO University of South Florida
 University of Massachusetts Boston
 University of Massachusetts Dartmouth
 University of Massachusetts Lowell
 University of New Hampshire
 Oregon State University
 Southeast Missouri State University
 University of South Florida
 Southern New Hampshire University
 Western Kentucky University

Dubai Universities

Heriot-Watt University, Dubai Campus
 Murdoch University, Dubai Campus

BCIE Offices:

Nigeria – Lagos Victoria Island Branch

14 Muri Okunola Street
 Off Ajose Adeogun Street
 (Megamound Place Building)
 Victoria Island, Lagos
 Tel: 013427601
 Mobile: 08062351535 / 07081819614
 BB Pin: 21F88769
 Email: nigeriakoyi@bcie.co.uk

Nigeria – Lagos Ikeja Branch

Valley View Plaza, 99 Opebi Road
 Ikeja, Lagos
 Tel: 013427600
 Mobile: 08023379290
 BB Pin: 227017F4
 Email: nigeriainkeja@bcie.co.uk

Nigeria – Lagos Visa Counselling Branch

2nd Floor Synergy Place
 (Same Building as UK visa Application Centre VFS)
 16 Billings Way, Oregon Industrial Area
 Ikeja, Lagos
 Tel: 013427602 / 013427603
 Mobile: 07084524926
 BB Pin: 2284580E
 Email: nigeriavcb@bcie.co.uk

Nigeria – Abuja Branch

24B Djibouti Crescent
 off Freetown Street
 behind Rockview Hotel
 the 5th House after Zartech
 Wuse 2, Abuja
 Tel: 094614900 / 09093478930
 Mobile: 08066788636
 BB Pin: 2845E5D5
 Email: abuja@bcie.co.uk

Nigeria – Kano Branch

1st Floor Chalet A
 Tahir Guest Palace (Annex)
 89 Lamido Road, Off Suleiman Crescent
 (Behind Niima Hotel), Nasarawa G.R.A
 Kano
 Tel: 08135403294
 Mobile: 08130743252
 BB Pin: 22EE2746
 Email: kano@bcie.co.uk

Nigeria – Port Harcourt Branch

2nd Floor, F.H. Jumbo House
 80 Aba Road
 Opposite Government Crafts
 Development Centre
 Port Harcourt, Rivers State
 Tel: 07085010020
 Mobile: 08069278962
 BB Pin: 23156DA1
 Email: manager_ph@bcie.co.uk

Nigeria – Ibadan

2nd Floor
 The Horizon Office Complex
 Akinyemi Bus Stop
 Ring Road, Ibadan
 Oyo State
 Tel: 022913532
 Mobile: 08171684741
 Email: manager_ibadan@bcie.co.uk

Ghana – Accra Branch

Off Oxford Street
 Behind SSNIT Hospital
 Next Door to Mama Mia Restaurant
 Osu, Accra
 Tel: 0302778748
 Fax: 0302786534
 Mobile: 0246015016 / 0244828577
 E-mail: ghana@bcie.co.uk

Kenya – Nairobi Branch

Amee Arcade (Formerly Rank Xerox House)
 Next to Unga House
 Opposite Corner Plaza
 1st Floor Parklands Road, Westlands
 PO Box 1354 - 00606, Nairobi, Kenya
 Tel: 3754741
 Fax: 3740463
 Mobile: 0722815178 / 0733815151
 Email: kenya@bcie.co.uk

Pakistan – Islamabad Branch

Tel: 092512814195 / 092512814196
 Mobile: 03338354851
 Email: islamabad_pk@bcie.co.uk

Pakistan – Lahore Branch

Tel: 0924235785514 / 15 / 16
 Mobile: 03238400638
 Email: lahore_pk@bcie.co.uk

Pearson Test of English Centre (PTE)

British Canadian International Education
 Abuja Branch
 Tel: 094611728
 Email: pte@bcie.co.uk

Pearson Test of English Centre (PTE)

British Canadian International Education
 Port Harcourt Branch
 Tel: 07085010020
 Email: pte_ph@bcie.co.uk



UK HEAD OFFICE: UNIT 9 STEPHENSON COURT | FRASER ROAD | PRIORY BUSINESS PARK | BEDFORD | MK44 3WH | UK
 TEL: 0870 803 4317 FAX: 0870 803 4318 WEBSITE: www.bcie.co.uk

GHANA

KENYA

UK

NIGERIA

PAKISTAN